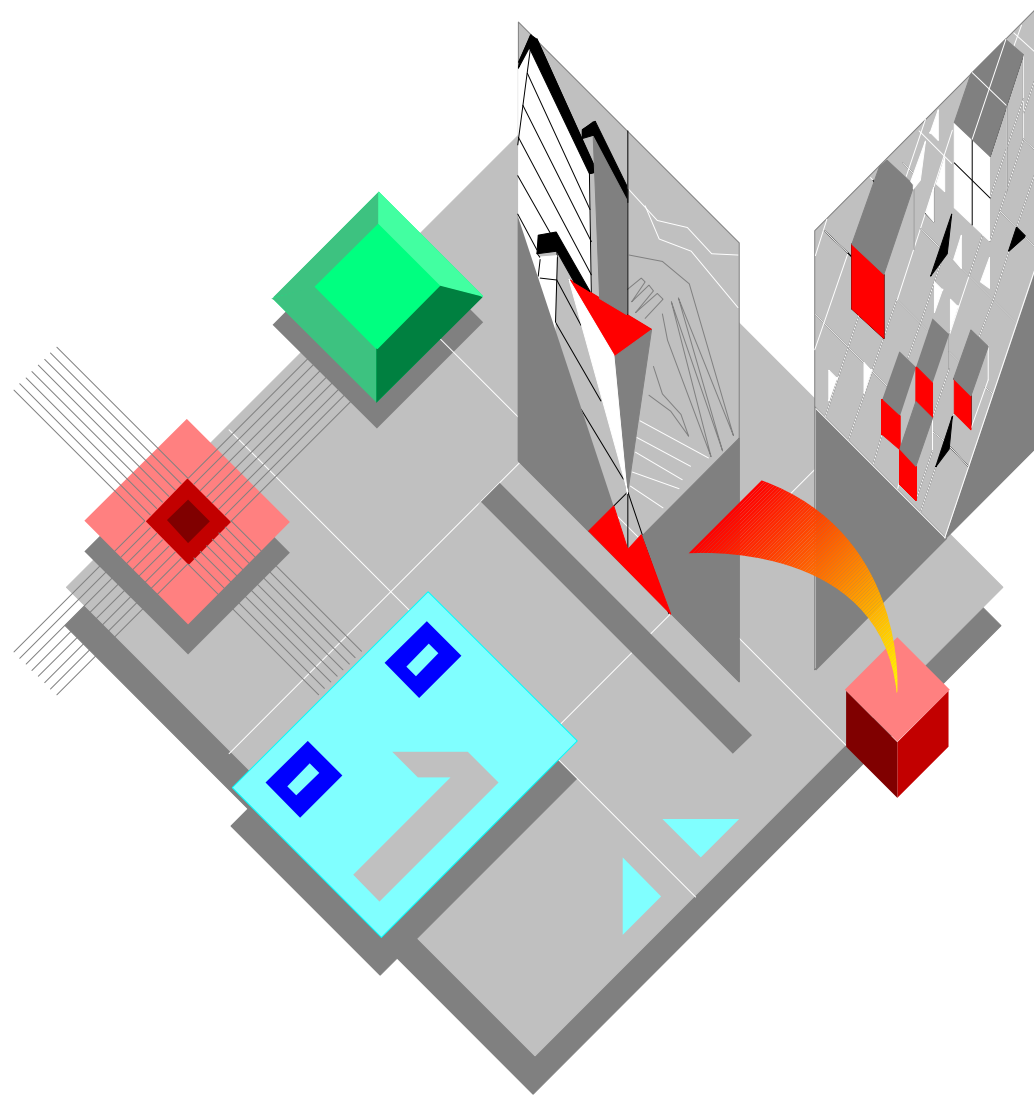


Field Engineering Library



JP 190

**CATALOGO PARTI DI RICAMBIO
SPARE PARTS CATALOGUE**

Copyright © 1997 Olivetti Lexikon S.p.A.

olivetti

Stampante-Printer

JP 190

**CATALOGO PARTI DI RICAMBIO
SPARE PARTS CATALOGUE**

Code 683390A-00

IMPORTANTE

PUBBLICAZIONE REDATTA DA OLIVETTI LEXIKON (GESTIONE RICAMBI E SCORTE).
QUESTO CATALOGO È L' UNICO DOCUMENTO AL QUALE FARE RIFERIMENTO PER
ORDINARE LE PARTI DI RICAMBIO.

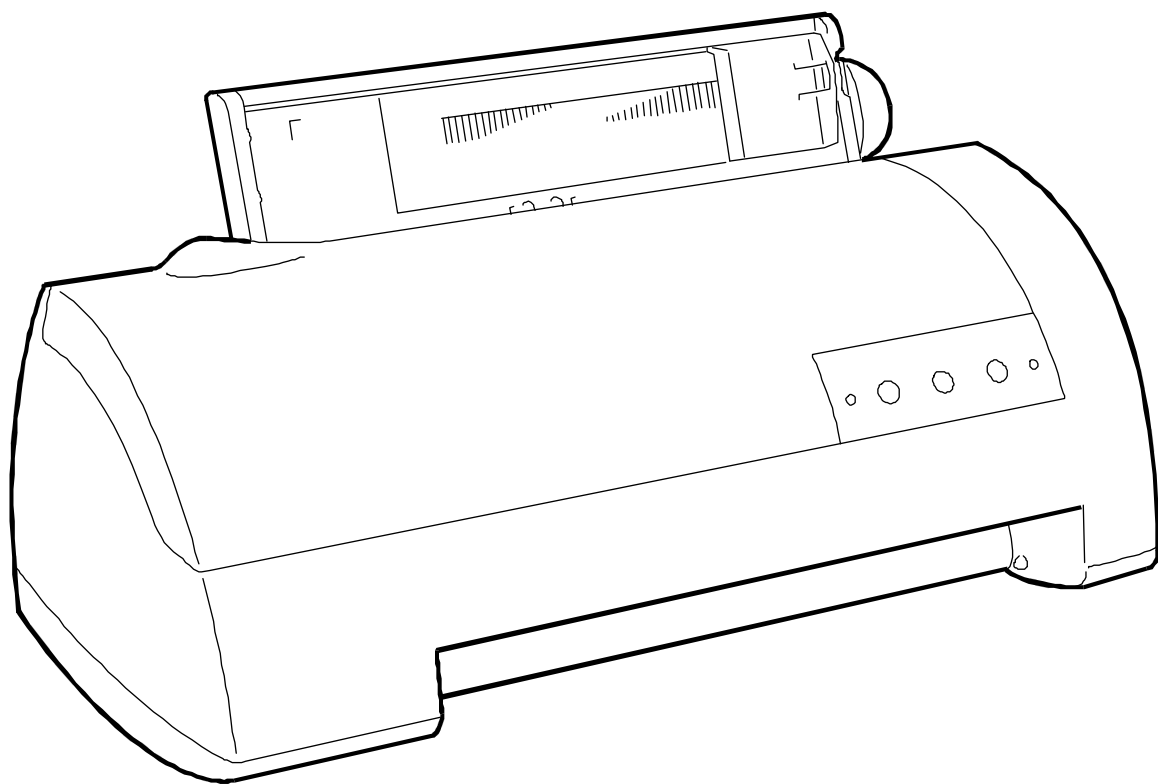
PER EVENTUALI INFORMAZIONI RIVOLGERSI AL NUMERO:
FAX: +39.125.524025

IMPORTANT

THIS PUBLICATION IS WRITTEN BY OLIVETTI LEXIKON (SPARE PARTS DEPARTMENT).
THIS CATALOGUE IS THE ONLY DOCUMENT TO WHICH REFERENCE MAY BE MADE
FOR ORDERING SPARE PARTS.

REQUESTS FOR ADDITIONAL INFORMATION SHOULD BE FAXED TO THE FOLLOWING
NUMBER:
FAX: +39.125.524025.

JP 190



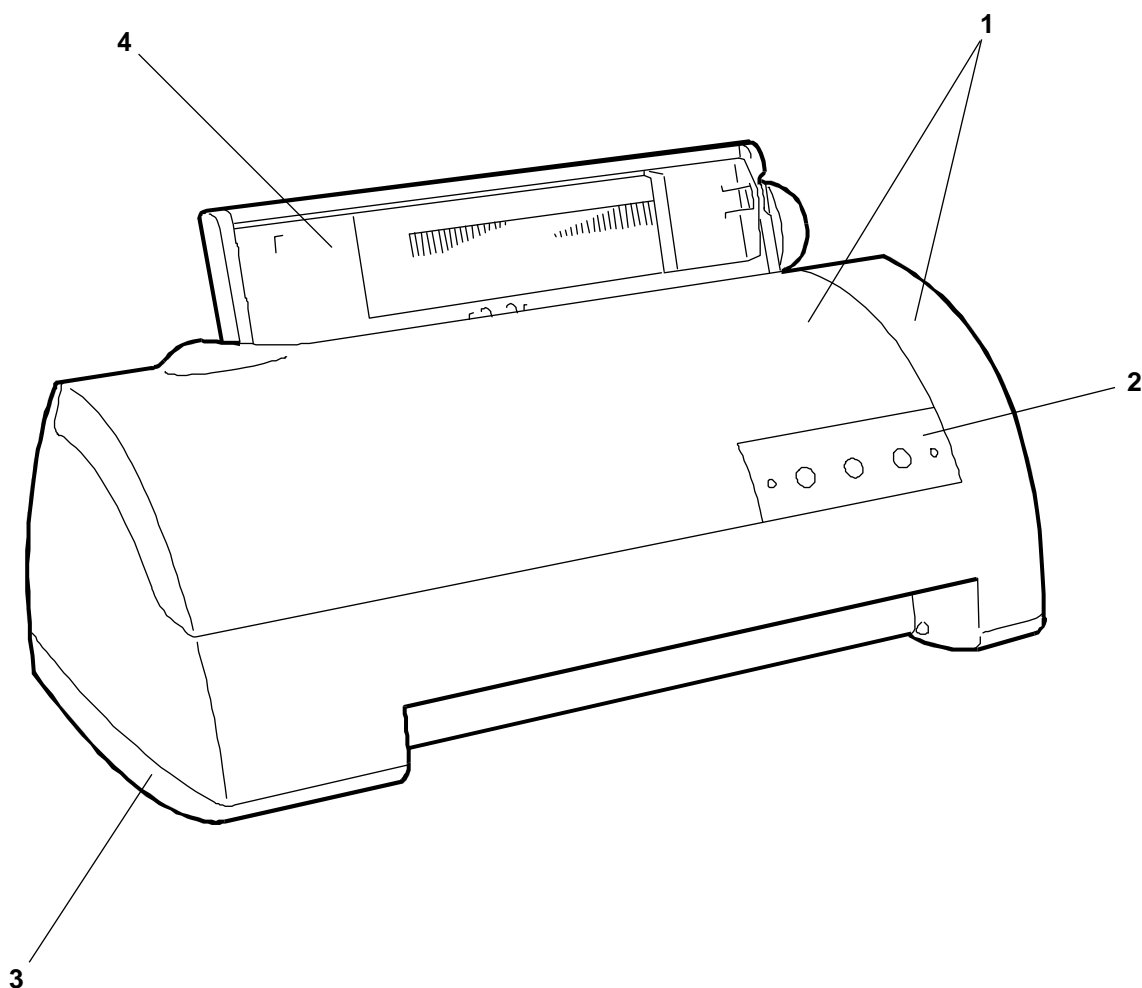
INDICE**JP 190**

GRUPPO CARROZZERIA	Pag.	3
GRUPPO CARRELLO E STAMPA	"	4
GRUPPO TRASCINAMENTO CARTA	"	5
GRUPPO ASF	"	6
GRUPPO FONDELLO E ALIMENTATORE	"	7
PIASTRA BASE	"	8
CAVI ALIMENTAZIONE	"	9
INDICE GENERALE DEI CODICI	"	10

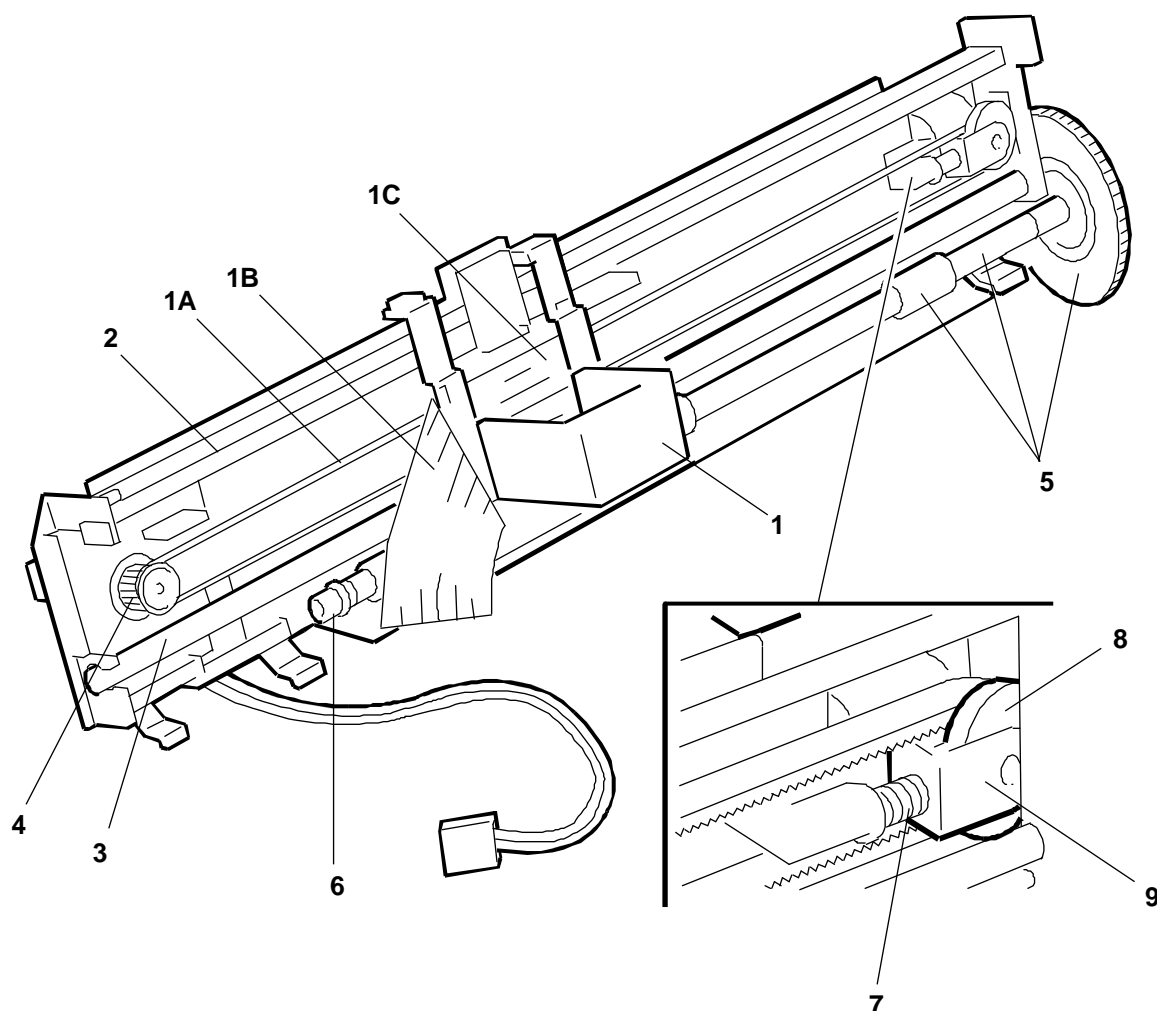
INDEX**JP 190**

CASING ASSEMBLY	Page	3
PRINT AND CARRIAGE ASSEMBLY	"	4
PAPER FEED ASSEMBLY	"	5
ASF ASSEMBLY	"	6
POWER SUPPLY AND BASE ASSEMBLY	"	7
MAIN BOARD	"	8
POWER CABLES	"	9
GENERAL CODES INDEX	"	10

REF.	CODE	DESCRIZIONE	DESCRIPTION
1	203292 B	GRUPPO SCOCCA	CASING GROUP
2	203212 A	CONSOLE	CONSOLE
3	203290 M	GRUPPO FONDELLO	BASE GROUP
4	203936 Y	GRUPPO ASF	ASF GROUP



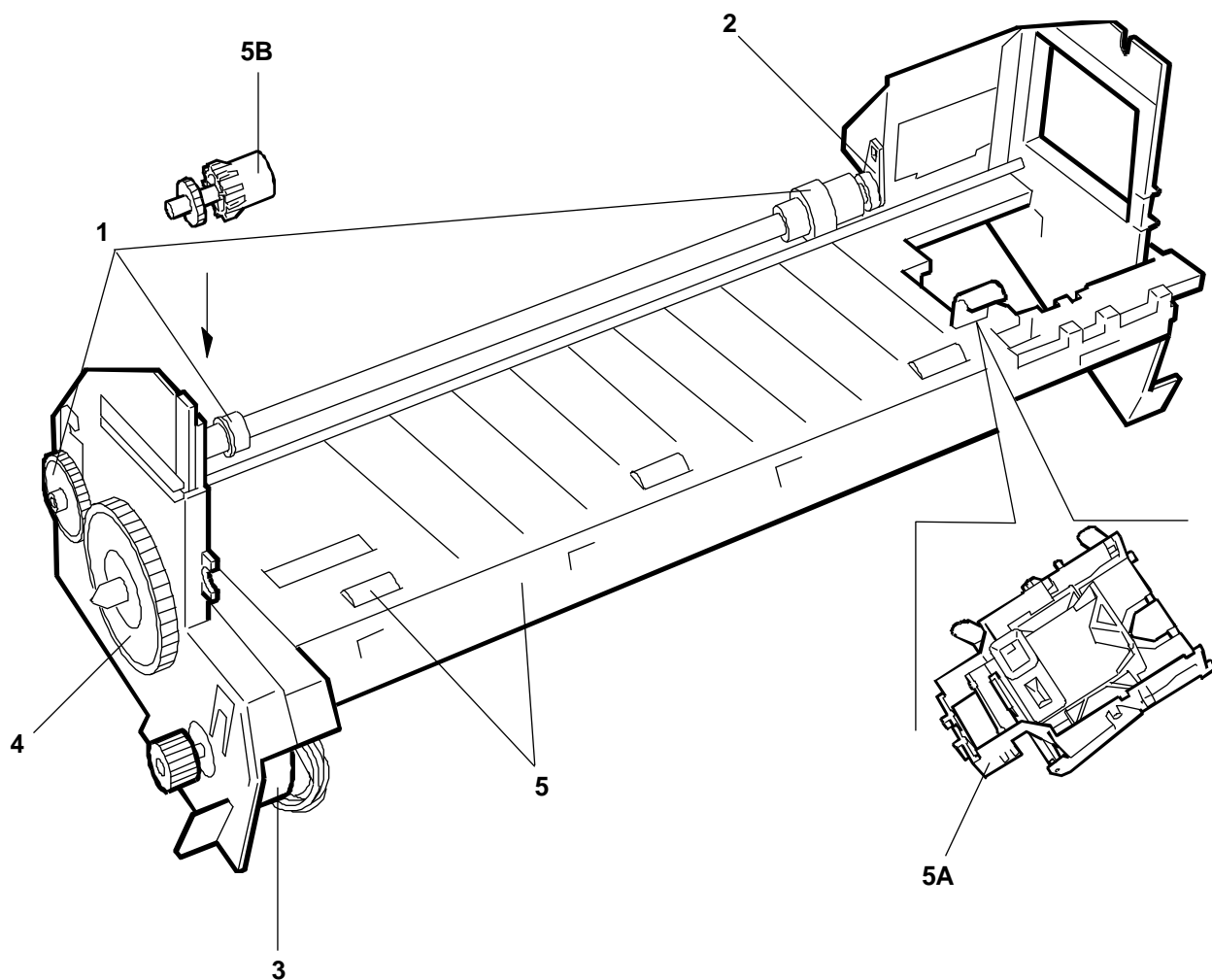
REF.	CODE	DESCRIZIONE	DESCRIPTION
1	203280 K	GRUPPO CARRELLO	CARRIAGE GROUP
1A	203038 F	CINGHIA	BELT
1B	203039 G	GRUPPO FLAT TESTINA	HEAD FLAT GROUP
1C	203037 W	GOMMINO CONTRASTO FLAT	FLAT CONTRAST RUBBER
2	203933 V	TRAVERSA CARRELLO	CARRIGE BAR
3	203248 W	ALBERO CARRELLO	CARRIAGE SHAFT
4	203052 D	GR. MOTORE CARRELLO	CARRIAGE MOTOR GROUP
5	203934 W	GR. ALBERO INGRESSO	ENTRY SHAFT ASSEMBLY
6	203089 B	BOCCOLA ALBERO INGRESSO	ENTRY SHAFT BUSHING
7	586524 B	MOLLA TENDI CINGHIA	BELT TENSION SPRING
8	586864 Q	PULEGGIA CINGHIA	BELT PULLEY
9	586865 R	CUNEO TENDI CINGHIA	BELT TENSION U-BOLT



GRUPPOTRASCINAMENTO CARTA PAPER FEED ASSEMBLY

JP190

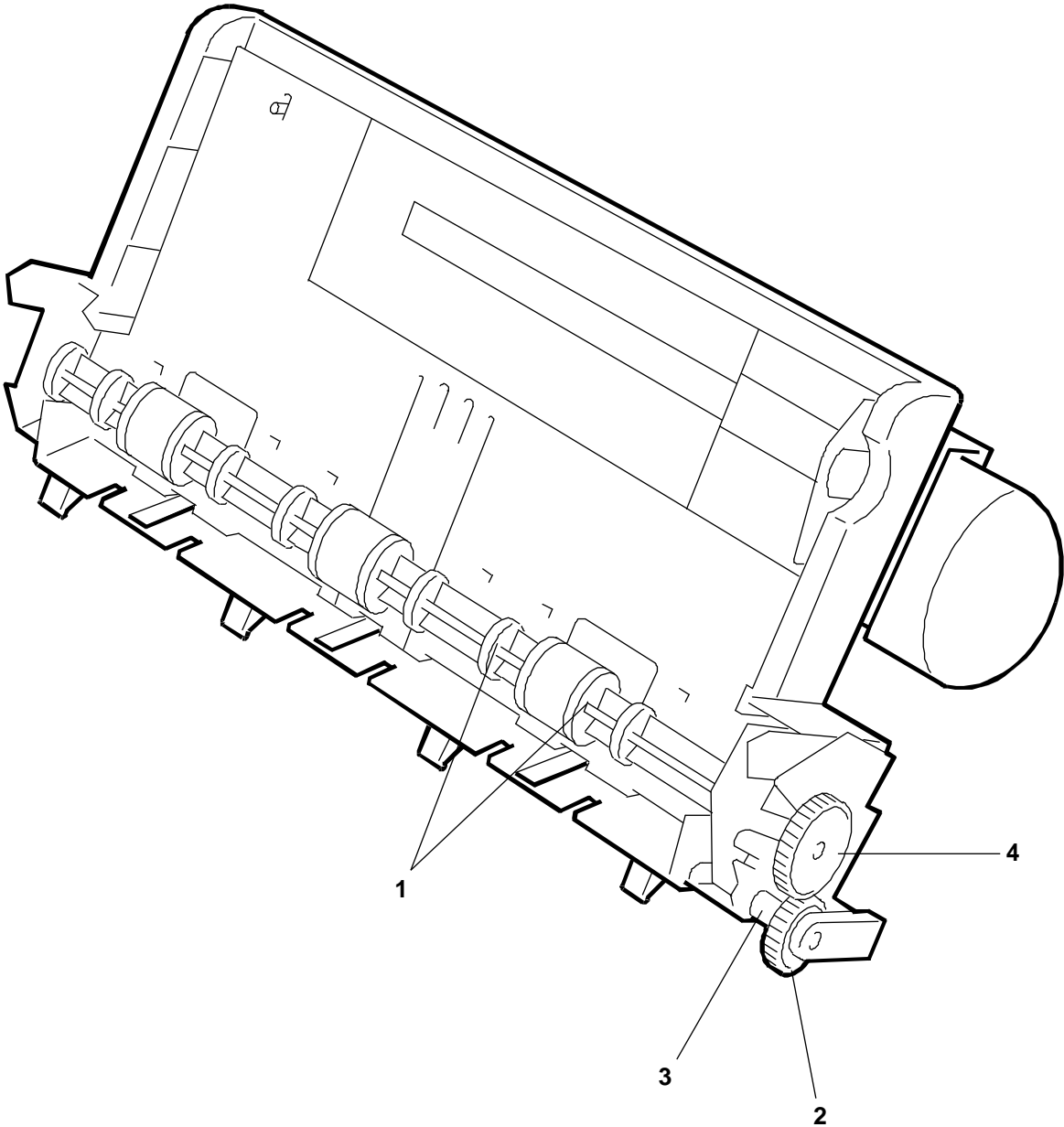
REF.	CODE	DESCRIZIONE	DESCRIPTION
1	203289 Q	GRUPPO ALBERO USCITA	EXIT SHAFT ASSEMBLY
2	203066 B	BOCCOLA ALBERO USCITA	EXIT SHAFT BUSHING
3	203076 D	GRUPPO MOTORE CARTA	PAPER SHAFT ASSEMBLY
4	203757 L	INGRANAGGIO INTERMEDIO	INTERMEDIATE GEAR
5	203284 B	GRUPPO STRUTTURA COMPLETO DI RULLINI E ANTIMACCHIA	FRAME ASSEMBLY COMPLETE WITH ROLLERS AND STAIN REVENTERS
5A	203286 D	GRUPPO STAZIONE SERVIZIO	SERVICE STATION
5B	203763 J	RULLO DI USCITA	EXIT ROLLER



GRUPPO ASF
ASF ASSEMBLY

JP 190

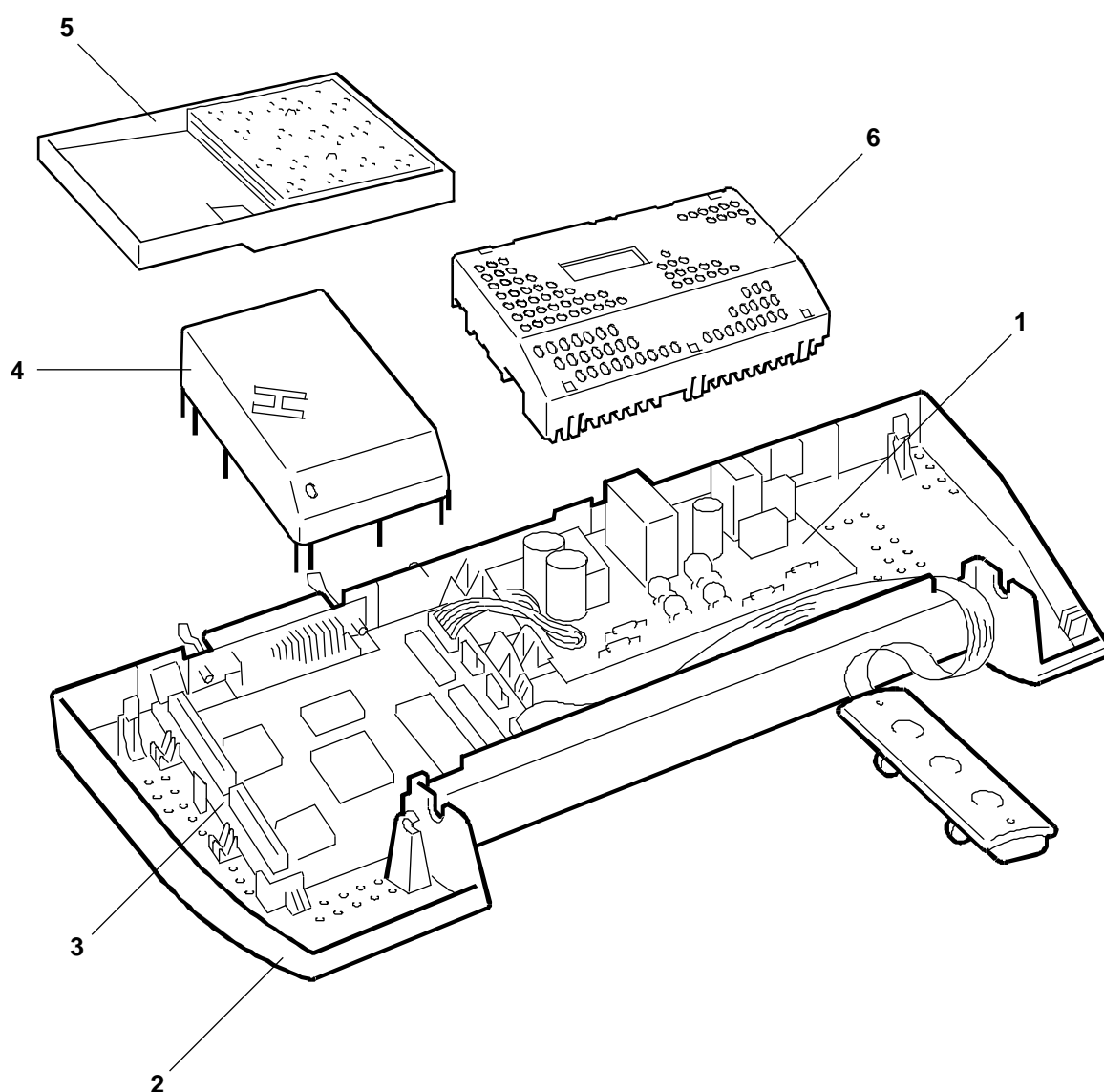
REF.	CODE	DESCRIZIONE	DESCRIPTION
	203936 Y	GRUPPO ASF	ASF GROUP
1	203783 F	GRUPPO ALBERO ASF	ASF SHAFT ASSEMBLY
2	203157 B	INGRANAG. INTERMEDIO ASF	INTERMEDIATE ASF GEAR
3	203161 F	MOLLA FRIZIONE	CLUTCH SPRING
4	203158 L	INGRANAGGIO ALBERO	SHAFT GEAR



GRUPPO FONDELLO E ALIMENTATORE POWER SUPPLY AND BASE ASSEMBLY

JP 190

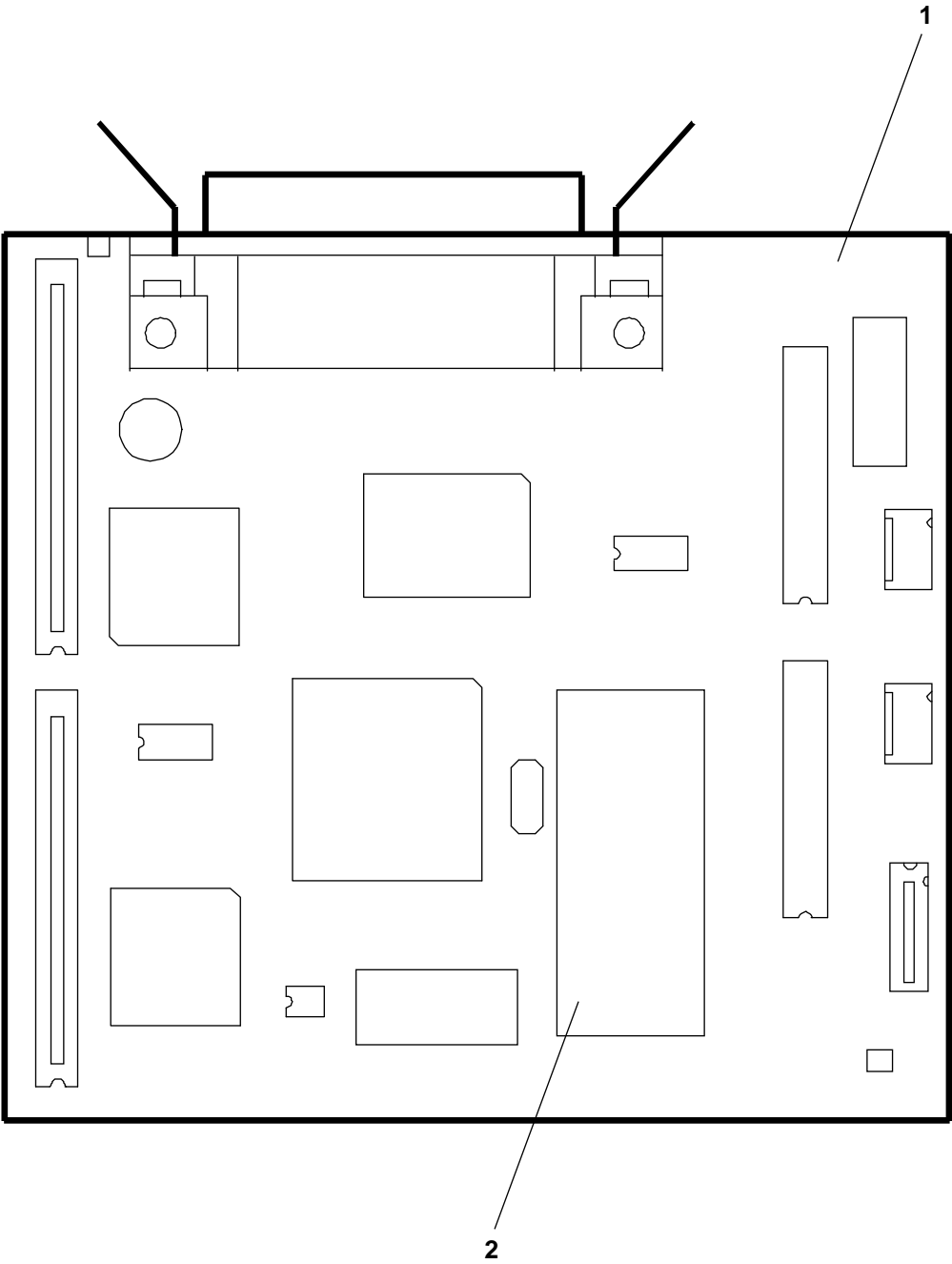
REF.	CODE	DESCRIZIONE	DESCRIPTION
1	203299 J 203298 R	ALIMENTATORE 220V ALIMENTATORE 115V	POWER SUPPLY 220V POWER SUPPLY 115V
2	203290 M	GRUPPO FONDELLO	BASE ASSEMBLY
3	612744 G	PIASTRA BASE SENZA FW	MAIN BOARD WITHOUT FW
4	203941 D	SCHERMO PIASTRA	BOARD SHIELD
5	203945 H	GRUPPO VASCHETTA	INK BASIN ASS'Y
6	203927 X	SCATOLA ALIMENTATORE	POWER SUPPLY BOX



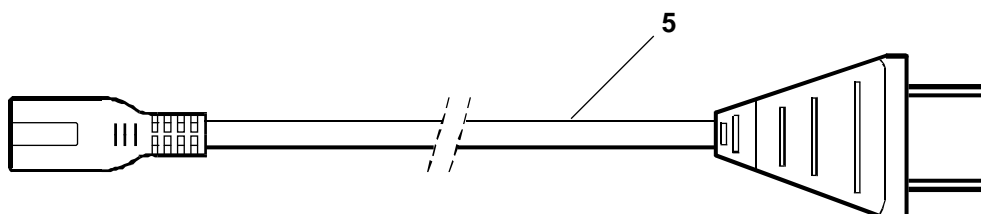
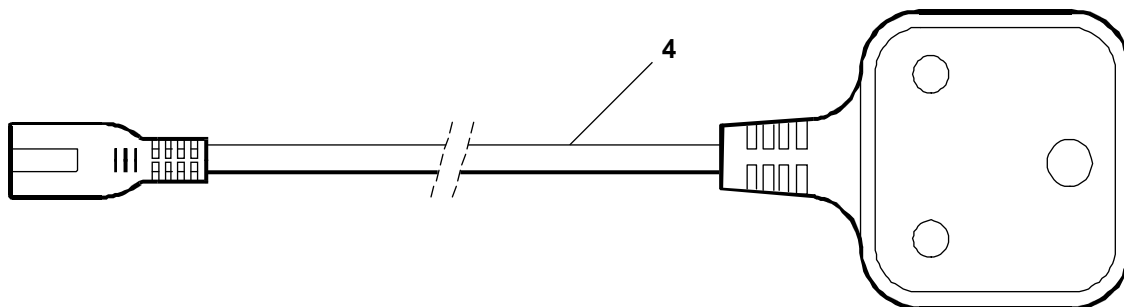
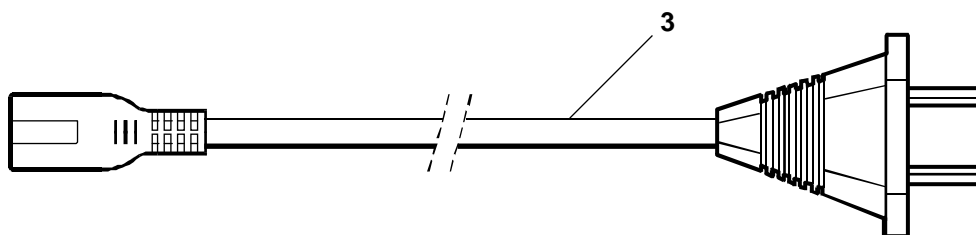
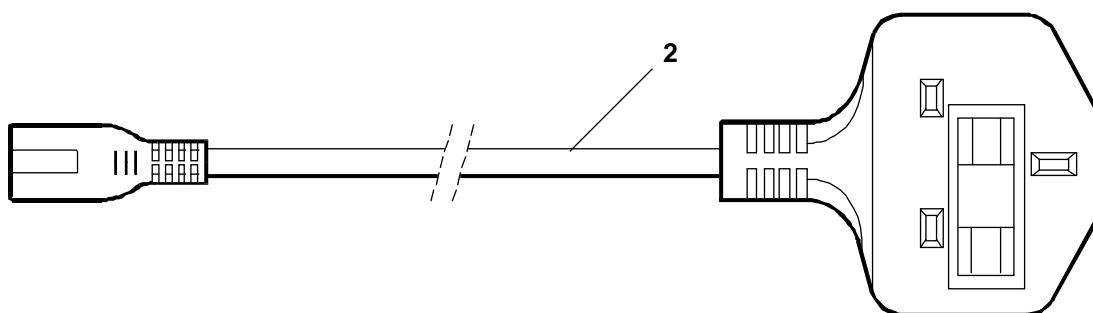
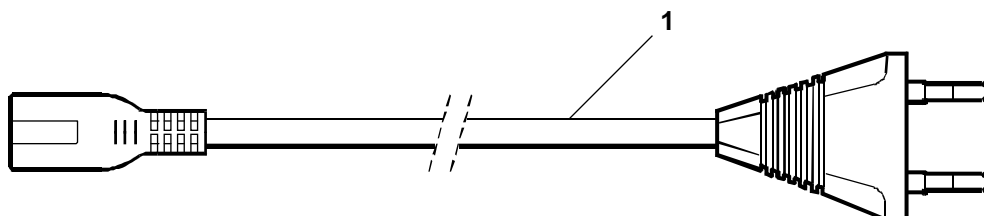
PIASTRA BASE
MAIN BOARD

JP 190

REF.	CODE	DESCRIZIONE	DESCRIPTION
1	612744 G	PIASTRA BASE SENZA FW	MAIN BOARD WITHOUT FW
2	230964 A ROM 4872690 B EPROM VERGINE 512 K8		ROM EPROM 512 K8



REF.	CODE	DESCRIZIONE	DESCRIPTION
1	203385 G	CAVO ALIMENTAZIONE EUROPA COR05	POWER CORD EUROPE COR05
2	203386 H	CAVO ALIMENTAZIONE U.K. COR042	POWER CORD U.K. COR042
3	203389 L	CAVO ALIMENTAZIONE AUSTRALIA COR043	POWER CORD AUSTRALIAN COR043
4	203388 K	CAVO ALIMENTAZIONE SUD AFRICA COR080	POWER CORD SOUTH AFRICA COR080
5	203387 A	CAVO ALIMENTAZIONE U.S.A. COR50	POWER CORD U.S.A. COR50



INDICE GENERALE DEI CODICI

GENERAL CODEX INDEX

CODICE CODE	PAGINA PAGE	CODICE CODE	PAGINA PAGE	CODICE CODE	PAGINA PAGE
203037W	4				
203038F	4				
203039G	4				
203052D	4				
203066B	5				
203076D	5				
203089B	4				
203157B	6				
203158L	6				
203161F	6				
203212A	3				
203248W	4				
203280K	4				
203284B	5				
203286D	5				
203289Q	5				
203290M	3				
203290M	7				
203292B	3				
203298R	7				
203299J	7				
203385G	9				
203386H	9				
203387A	9				
203388K	9				
203389L	9				
203757L	5				
203763J	5				
203783F	6				
203927X	7				
203933V	4				
203934W	4				
203936Y	3				
203936Y	6				
203941D	7				
203945H	7				
230964A	8				
586524B	4				
586864Q	4				
586865R	4				
612744G	7				
612744G	8				
4872690B	8				