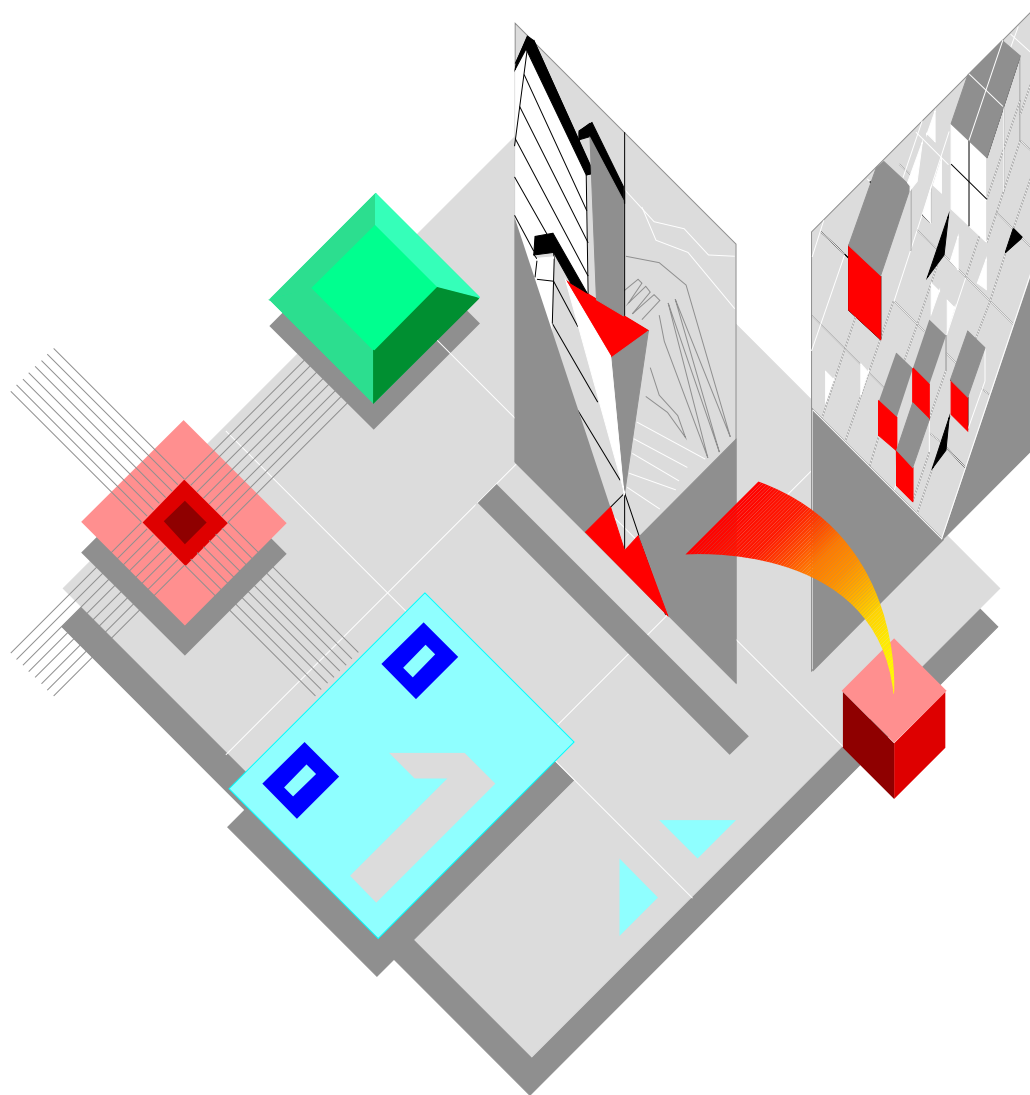


Field Engineering Library



PR 2

**CATALOGO PARTI DI RICAMBIO
SPARE PARTS CATALOGUE**

Copyright © 1996 Olivetti Lexikon S.p.A.

olivetti

STAMPANTE - PRINTER

PR 2

CATALOGO PARTI DI RICAMBIO
SPAREPARTSCATALOGUE

Code2720971T-01

IMPORTANTE

PUBBLICAZIONE REDATTA DA OLIVETTI LEXIKON (GESTIONE RICAMBI E SCORTE).
QUESTO CATALOGO È L' UNICO DOCUMENTO AL QUALE FARE RIFERIMENTO PER
ORDINARE LE PARTI DI RICAMBIO.

PER EVENTUALI INFORMAZIONI RIVOLGERSI AL NUMERO:

FAX: +39.125.524025

IMPORTANT

THIS PUBLICATION IS WRITTEN BY OLIVETTI LEXIKON (SPARE PARTS DEPARTMENT).
THIS CATALOGUE IS THE ONLY DOCUMENT TO WHICH REFERENCE MAY BE MADE
FOR ORDERING SPARE PARTS.

REQUESTS FOR ADDITIONAL INFORMATION SHOULD BE FAXED TO THE FOLLOWING
NUMBER:

FAX: +39.125.524025.

INDICE

PR2/S10 MACCHINA BASE

COMPLESSIVO	Pag. 3
CARROZZERIA	" 4
GRUPPO FONDELLO E ALIMENTATORE	" 6
GRUPPO STRUTTURA INFERIORE	" 8
GRUPPO PRESSORI POSTERIORI	" 14
GRUPPO STAMPA	" 16

PR2/S12

COMPLESSIVO	Pag. 19
GRUPPO STRUTTURA INFERIORE CON MAGN. ORIZZ.	" 20
GRUPPO MAGNETICO ORIZZONTALE	" 22

PR2/S13

COMPLESSIVO	Pag. 25
GRUPPO FONDELLO E ALIMENTATORE	" 26
GRUPPO STRUTTURA INFERIORE	" 28
GRUPPO PRESSORI POSTERIORI	" 30
GRUPPO MAGNETICO VERTICALE	" 32
PIASTRE ELETTRONICHE MOD. PR2/S10-PR2/S12-PR2/S13	" 33
PIASTRE ELETTRONICHE	" 34
MINUTERIA	" 36

INDICE GENERALE DEI CODICI	Pag. 37
-----------------------------------------	----------------

INDEX

STANDARD PR2/S10 VERSION

OVERVIEW Pag. 3

CASING " 4

BASE UNIT AND POWER SUPPLY " 6

LOWER SECTION GROUP " 8

REAR PRESSURE UNIT " 14

PRINTING UNIT " 16

PR2/S12

OVERVIEW Pag. 19

LOWER SECTION WITH HORIZ. MAGN. DEVICE " 20

HORIZONTAL MAGNETIC READING DEVICE " 22

PR2/S13

OVERVIEW Pag. 25

BASE UNIT AND POWER SUPPLY " 26

LOWER SECTION GROUP " 28

REAR PRESSURE UNIT " 30

VERTICAL MAGNETIC DEVICE GROUP " 32

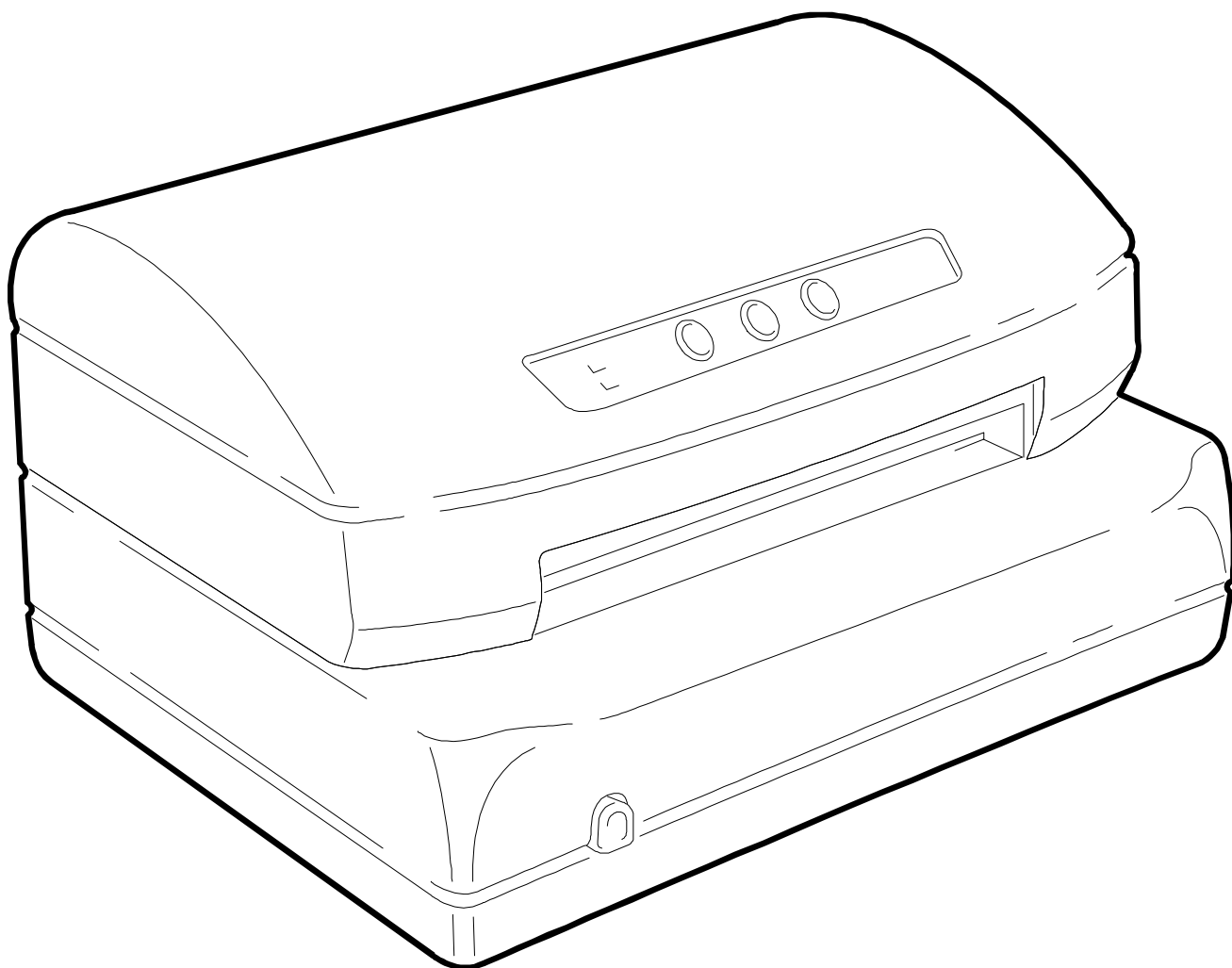
ELECTRONIC BOARD MOD. PR2/S10-PR2/S12-PR2/S13 " 22

ELECTRONIC BOARD " 34

DETAILS " 36

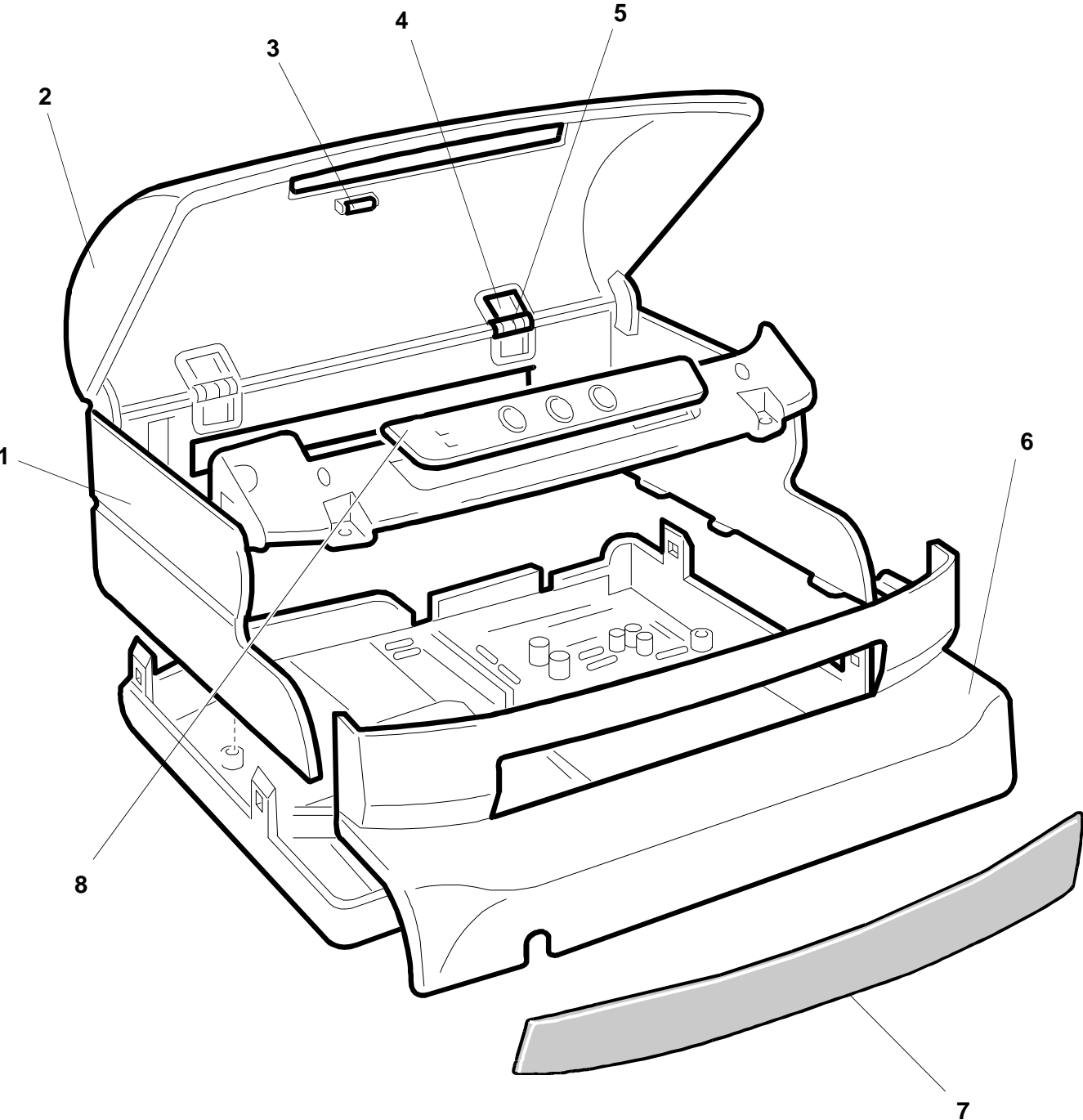
GENERAL INDEX Pag. 37

MODELLO VERSION	DESCRIZIONE	DESCRIPTION
PR2/S10	MODELLO BASE	STANDARD VERSION
PRS/S12	MODELLO BASE + MAGNETICO ORIZZONTALE	STANDARD VERSION + HORIZONTAL MAGNETIC DEVICE
PR2/S13	MODELLO BASE + MAGNETIC O VERTICALE	STANDARD VERSION + VERTICAL MAGNETIC DEVICE

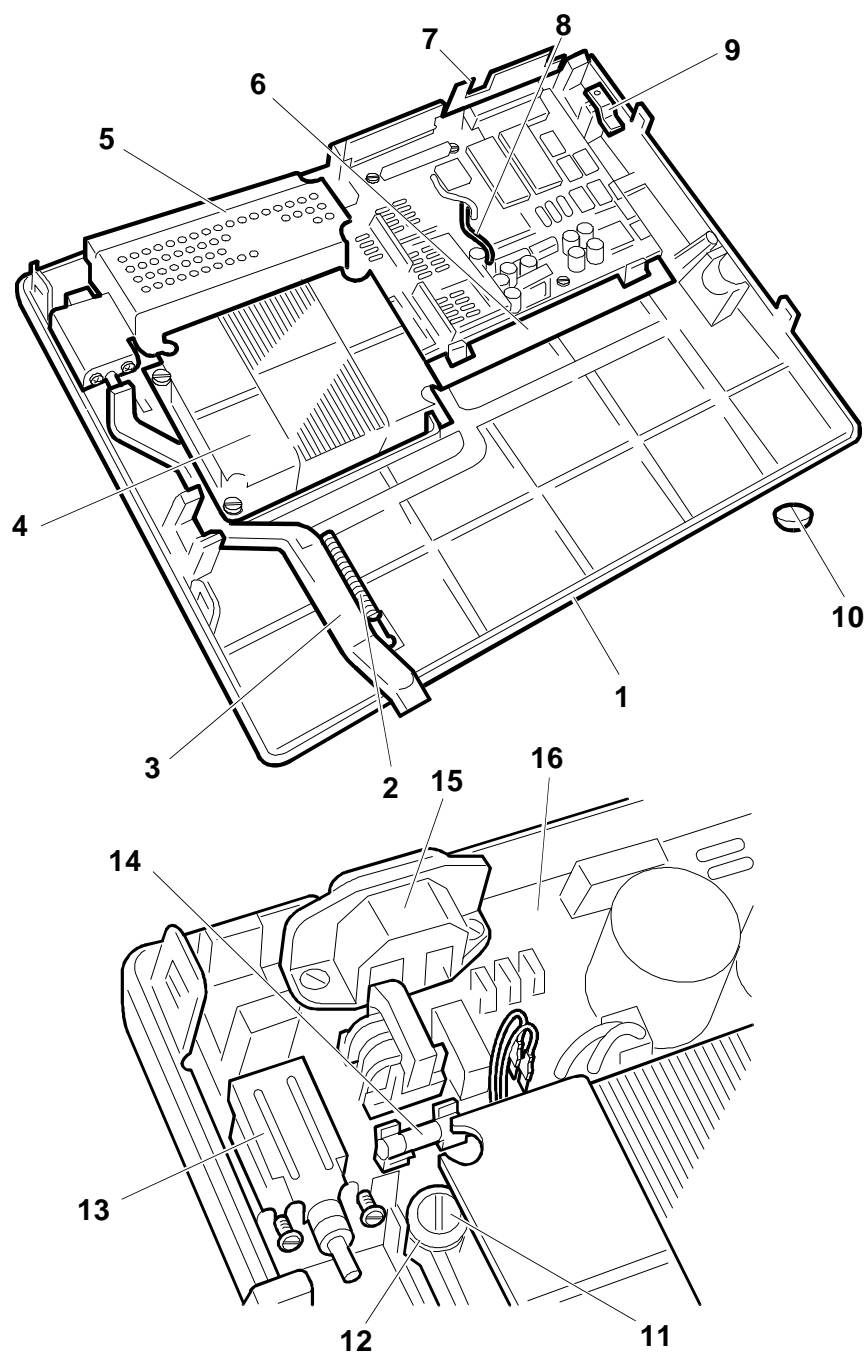


PR2/S10 MACCHINA BASE STANDARD PR2/S10 VERSION

REF.	CODE	DESCRIZIONE	DESCRIPTION
1	473543 U	GRUPPO SCOCCA	BODY ASSEMBLY
2	473544 V	GRUPPO COPERTURA SUPERIORE	UPPER COVER ASSEMBLY
3	752610 J	MAGNETE PER COPERTURA	COVER MAGNET
4	473540 D	CERNIERA	HINGE
5	759410 R	PERNO PER CERNIERA	HINGE FOR PIN
6	473545 W	GRUPPO FRONTALE	FRONT SECTION ASSEMBLY
7	473559 C	FONOASSORBENTE ANTERIORE	FRONT DEADENING
8	473539 Y	CONSOLE	CONSOLE

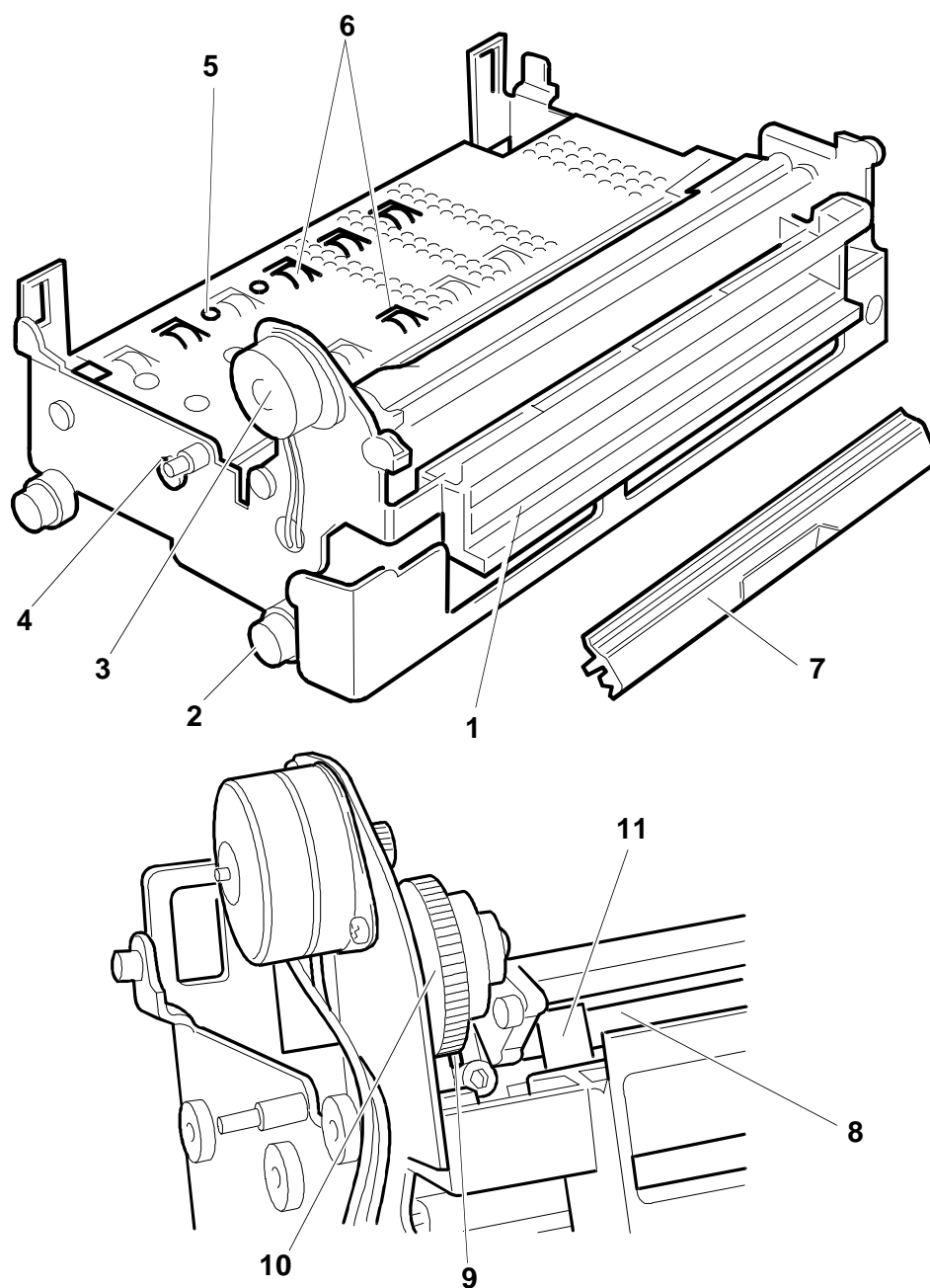


REF.	CODE	DESCRIZIONE	DESCRIPTION
1	473542 T	GRUPPO FONDELLO	BASE UNIT
2	473034 R	MOLLA CORSOIO INTERRUTTORE	SLIDING SWITCH SPRING
3	473033 Q	CORSOIO INTERRUTTORE	SLIDING SWITCH
4	473108 H	TRASFORMATORE 230V	230V TRANSFORMER
	473109 A	TRASFORMATORE 115V	115 V TRANSFORMER
5	473031 N	CONTENITORE GRUPPO RETE	NETWORK UNIT COMPARTMENT
6	473030 Z	SCHERMO PER PIASTRA	BOARD SCREEN
7	473032 P	SCHERMO CONNETTORI	CONNECTOR SCREEN
8	472439 T	CAVO PIASTRINO ALIMENTAZIONE	CABLE FOR POWER SUPPLY BOARD
9	759413 G	STAFFA FISSAGGIO MECCANICA	MECHANICAL FIXING ROD
10	470925 U	GOMMINO DI APPOGGIO	RUBBER REST
11	723349 K	STUD FISSAGGIO TRASFORMATORE	TRANSFORMER FASTENING STUD
12	723352 E	GOMMINO SOSPENSIONE TRASFORMATORE	RUBBER SUPPORT FOR TRANSFORMER
13	5183323 H	INTERRUTTORE RETE	NETWORK SWITCH
14	5358331 H	FUSIBILE 2A-115V-5x20	FUSE 2A-115V-5x20
	5373185 X	FUSIBILE 1,25A-220V-5x20	FUSE 1,25A-220V-5x20
15	471839 T	GRUPPO PRESA RETE	NETWORK SOCKET UNIT
16	474399 D	PIASTRINO ALIMENTATORE	POWER SUPPLY BOARD

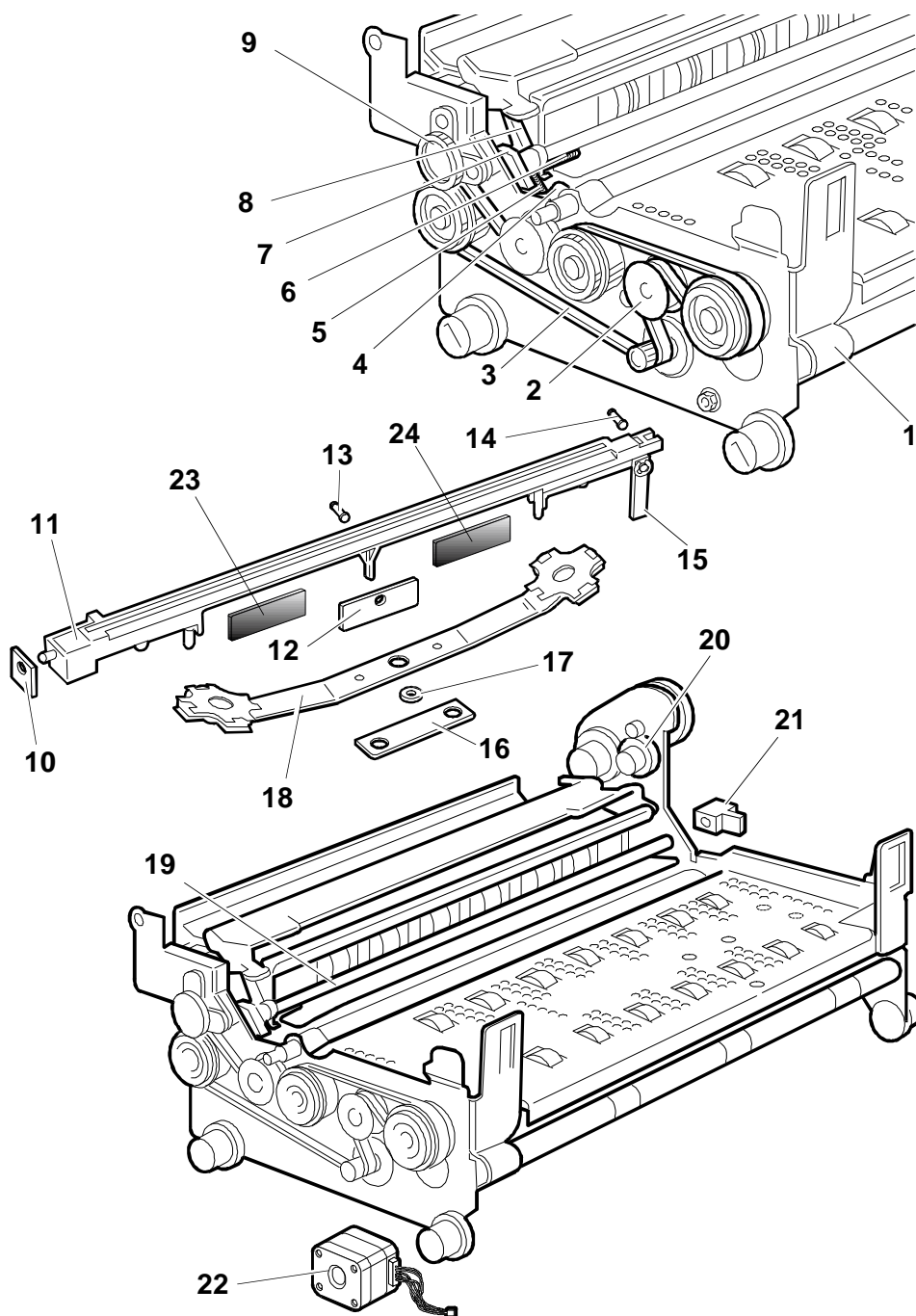


GRUPPO STRUTTURA INFERIORE
LOWER SECTION**PR2/S10**
PR2/S10

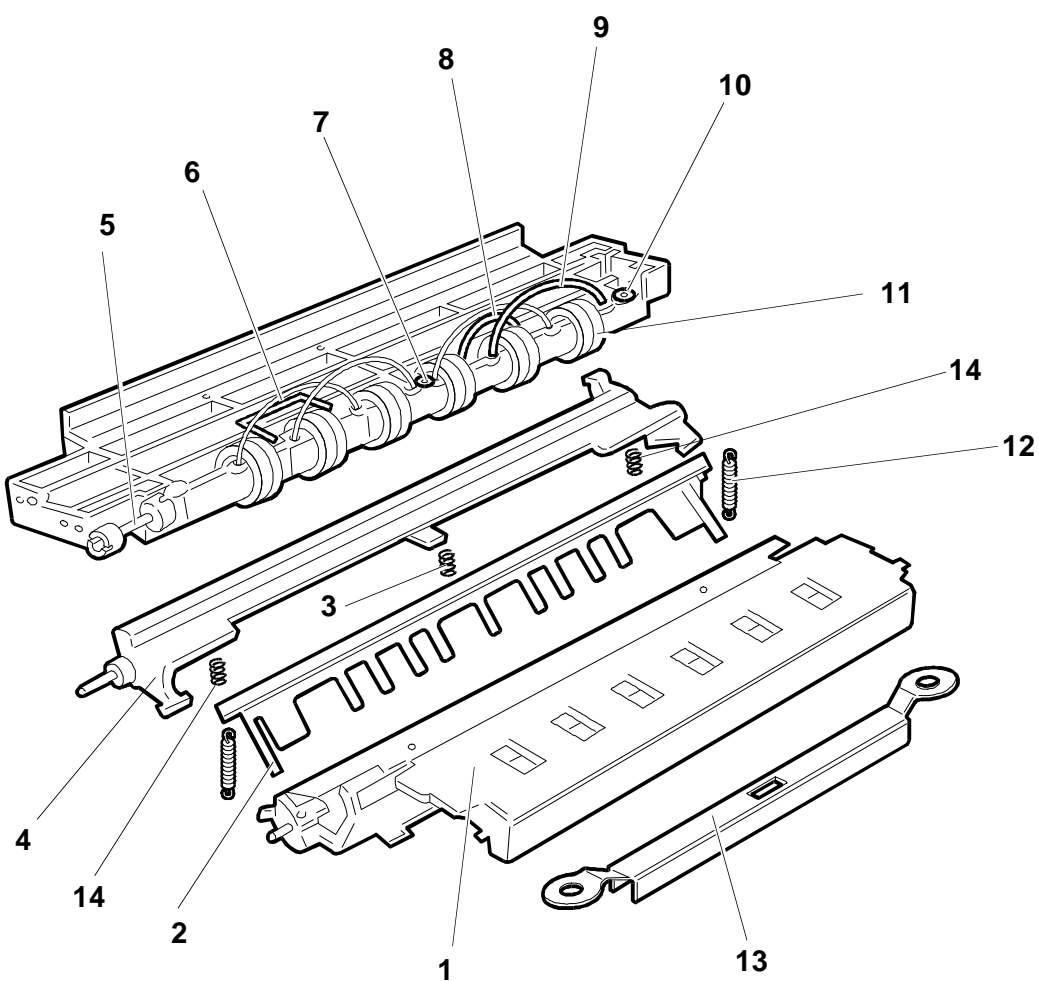
REF.	CODE	DESCRIZIONE	DESCRIPTION
1	473084 L	CONVOGLIATORE CARTA	PAPER FEED
2	473013 L	GOMMINO SMORZATORE STRUTTURA	DAMPING RUBBER FRAME
3	473070 H	GRUPPO MOTORE SERVIZI	MOTOR SERVICE UNIT
4	473018 Z	BOCCOLA SINISTRA	LEFT GUIDE BUSH
5	473006 W	GRUPPO FOTO POSTERIORE	REAR PHOTO UNIT
6	473028 T	GR. ALBERI DI TRASC. (Npz = 3)	FEED SHAFT GROUP (Pcs = 3)
7	473086 N	SPORTELLLO DEFLETTORE	DEFLECTOR FLAP
8	473073 Y	ALBERO SUPPORTO PRESSORI	PRESSURE SUPPORT ARM
9	473074 Z	PONTE COMANDO PRESSORI	LINK FOR PRESSURE MECH.
10	473072 X	CAMMA SERVIZI	SERVICE CAM
11	473075 S	PORTAMOLLA PRESSORI	PRESSURE SPRING HOLDER



REF.	CODE	DESCRIZIONE	DESCRIPTION
1	473024 P	SCHERMO RULLINI	ROLLER SCREEN
2	473021 L	PULEGGIA TENDICINGHIA	BELT TENSION PULLEY
3	751171 D	CINGHIA TRASC. DOCUM. (Z=210)	DOCUMENT FEED BELT (Z=210)
4	473050 D	BILANCERE COMANDO BANDELLA	FLAP EQUALIZING DRIVE UNIT
5	473052 T	MOLLA GRUPPO BANDELLA	FLAP UNIT SPRING
6	473065 Y	MOLLA LEVA FOTOSENSORI	PHOTOELECTRIC LEVER SPRING
7	473051 S	MANOVELLA COMANDO BANDELLA	FLAP CONTROL MECHANISM
8	473053 U	LEVA FOTOSENSORI SERVIZI	PHOTOELECTRIC SERVICES LEVER
9	473174 S	GR. COMANDO RULLINI PRESSORI	CONTROLS FOR ROLLER PRESSURE
10	473049 G	ZAVORRA SINISTRA	LEFT BALLAST
11	473040 B	GR. TRAVERSA DI STAMPA	PRINTER CROSSFLIGHT UNIT
12	473058 H	ZAVORRA CENTRALE (Npz = 2)	CENTRAL BALLAST (Pcs = 2)
13	473056 X	PERNO PER ZAVORRA CENTRALE	CENTRAL BALLAST PIN
14	473047 W	PERNO PER ZAVORRA DESTRA	RIGHT BALLAST PIN
15	473048 F	ZAVORRA DESTRA	RIGHT BALLAST
16	473063 W	PIASTRINO FISSAGGIO BALESTRA	BALLAST ANCHORAGE PLATE
17	473064 X	RONDELLA PER BARRA	BAR WASHER
18	473059 A	GR. BALESTRA AMMORTIZZ.	SPRING DAMPER UNIT
19	473054 V	GR. BANDELLA PREMISCARTA	PAPER PRESSURE FLAP
20	473071 W	INGRANAGGIO DI RINVIO	INTERMEDIATE GEAR
21	473057 Y	LEVA APERTURA BANDELLA	FLAP OPENING LEVER
22	473020 X	GRUPPO MOTORE INTERLINEA	LINE SPACING MOTOR UNIT
23	473066 Z	SILENZIATORE TRAVERSA STAMPA POST.	FRONT PRINTING BAR DAMPENING (10 x 70)
24	473067 S	SILENZIATORE TRAVERSA STAMPA ANT.	REAR PRINTING BAR DAMPENING (6 x 70)

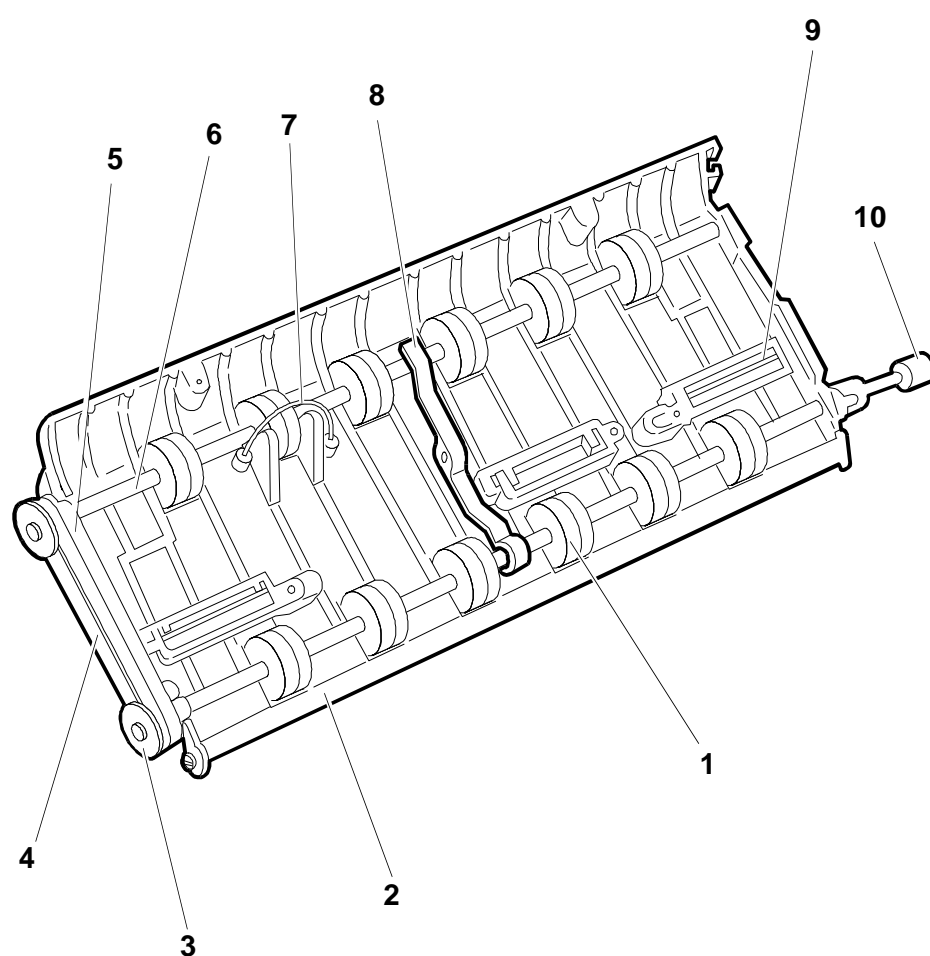


REF.	CODE	DESCRIZIONE	DESCRIPTION
1	473085 M	SUPPORTO CARTA FOTO ANTERIORE	FRONT PHOTO SUPPORT
2	473077 U	PETTINE	COMB
3	473100 D	MOLLA PRESSORI CENTRALE	CENTRAL PRESSURE SPRING
4	473076 T	SUPPORTO PETTINE	SUPPORT FOR COMB
5	473175 T	GIUNTO	JOINT
6	473091 K	MOLLA RULLINI ALLINEAMENTO	ALIGNMENT ROLLER SPRING
7	473088 Y	BOCCOLA CENTRALE	CENTRAL GUIDE BUSH
8	473192 M	FIBRA OTTICA L=80	OPTICAL FIBER L=80
9	473191 L	FIBRA OTTICA L=100	OPTICAL FIBER L=100
10	473087 P	BOCCOLA LATERALE	SIDE GUIDE BUSH
11	473101 S	GRUPPO RULLINI ALLINEAMENTO	ALIGNMENT ROLLERS UNIT
12	473078 D	MOLLA PETTINE (Npz = 2)	COMB SPRING (Pcs = 2)
13	473332 Y	TRAVERSA DI SUPPORTO FOTO	PHOTO SUPPORT BAR
14	473083 K	MOLLA PRESSORE LATERALE (Npz = 2)	SIDE PRESSURE SPRING (Pcs = 2)

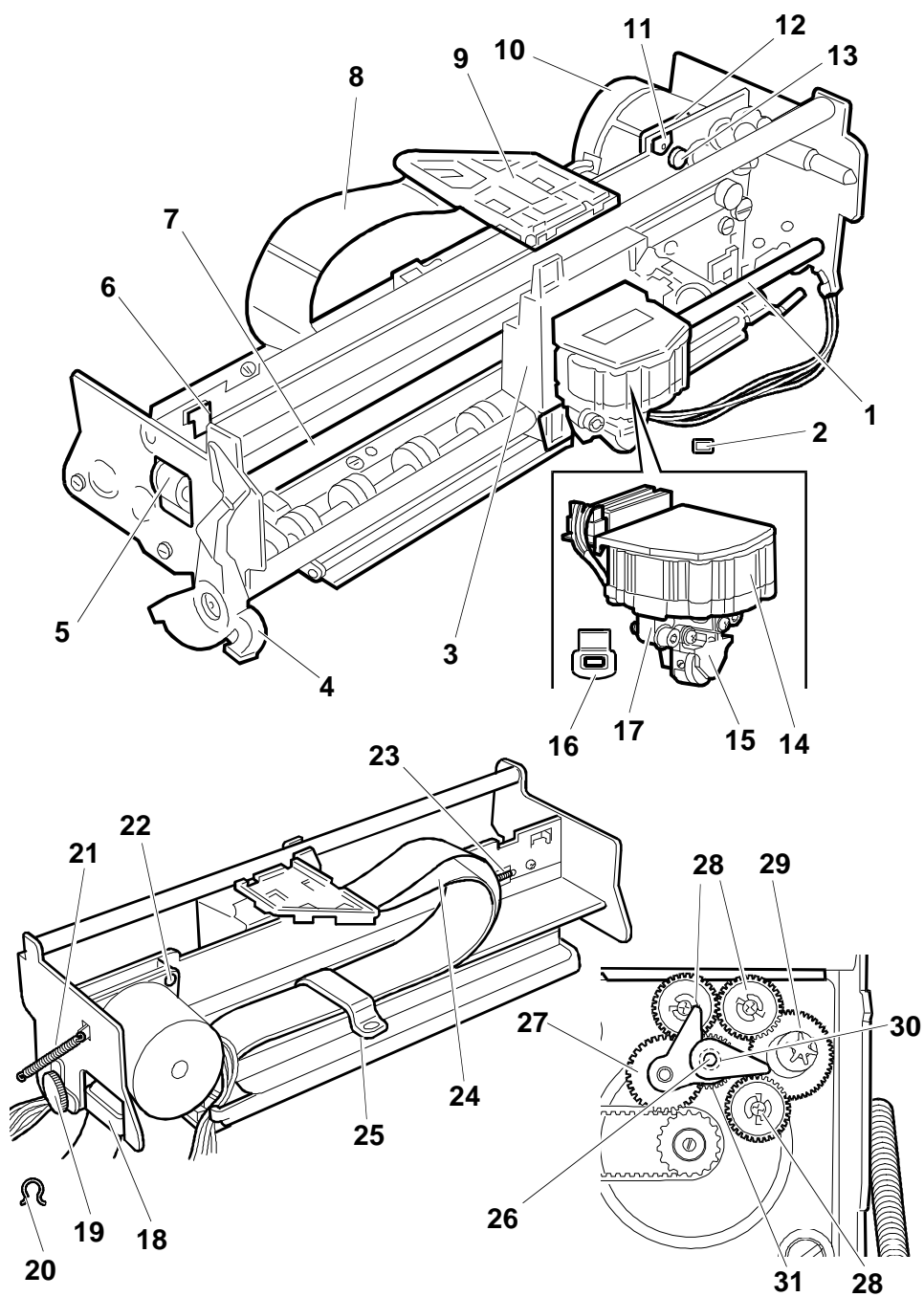


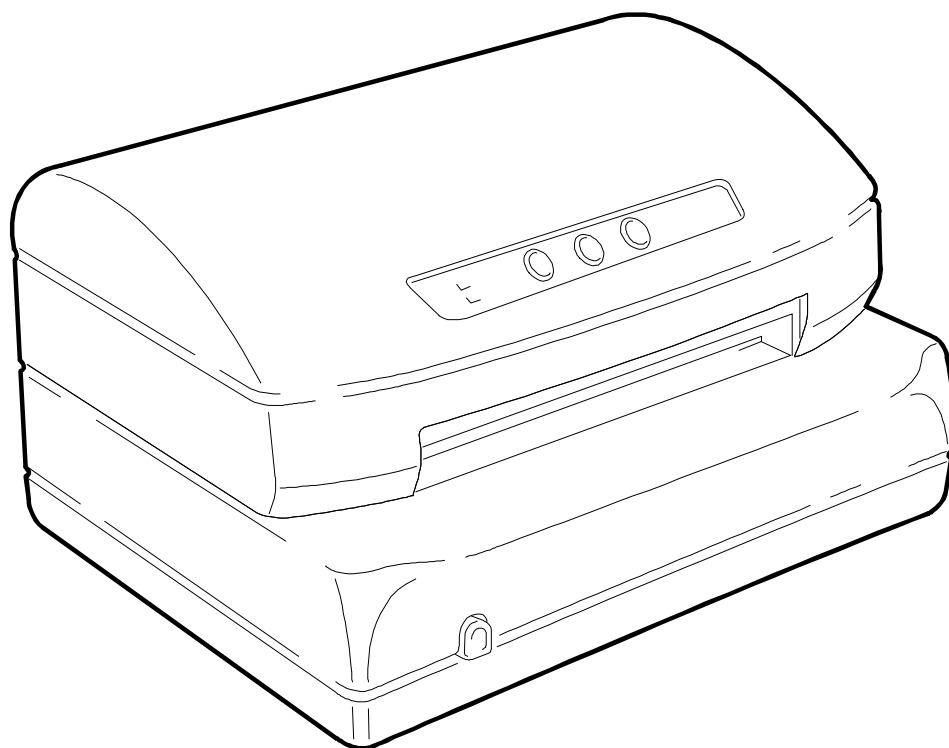
GRUPPO PRESSORI POSTERIORI
REAR PRESSURE UNIT**PR2/S10**
PR2/S10

REF.	CODE	DESCRIZIONE	DESCRIPTION
1	473103 U	GRUPPO RULLINI ANTERIORI	FRONTS ROLLER UNIT
2	473160 G	SUPPORTO PRESSORI	PRESSURE UNITS SUPPORT
3	473166 S	PULEGGIA	PULLEY
4	473172 Y	CINGHIA DENTATA Z=88	COGGED BELT Z=88
5	473171 X	BOCCOLA SINISTRA	LEFT GUIDE BUSH
6	473107 Y	GRUPPO RULLINI PRESSORI POSTERIORI	REAR PRESSURE ROLLERS UNIT
7	473192 M	FIBRA OTTICA L=80	OPTICAL FIBER L=80
8	473167 T	BOCCOLA CENTRALE	CENTRAL GUIDE BUSH
9	473173 Z	MOLLA TORSIONE ((Npz = 3)	TORSION SPRING (Pcs = 3)
10	473175 T	GIUNTO	JOINT



REF.	CODE	DESCRIZIONE	DESCRIPTION
1	473127 K	ALBERO SUPPORTO CARRELLO	CARRIAGE SUPPORT SHAFT
2	473150 E	FELTRO LUBRIFICAZIONE CARRELLO	CARRIAGE LUBRICATING PAD
3	473130 S	CARRELLO SUPPORTO TESTINA	HEAD SUPPORT CARRIAGE
4	473129 V	LEVA APERTURA STRUTTURA SUP.	OPENING LEVER FOR UPPER SEC.
5	751272 J	PULEGGIA DI RINVIO	SNUB PULLEY
6	473149 H	SUPPORTO TENDICINGHIA	BELT TENSION SUPPORT
7	473123 P	CINGHIA TRASPORTO CARRELLO	CARRIAGE MOVEMENT BELT
8	473133 R	SCHERMO FLAT TESTINA	PRINT HEAD FLAT CABLE SCREEN
9	473137 M	SUPPORTO FLAT	SUPPORT FOR FLAT CABLE
10	473140 C	GRUPPO MOTORE TRASPORTO	TRANSPORT MOTOR UNIT
11	473156 Y	STAFFA COLLEG. TERRA	EARTH ROD
12	473141 Z	AMMORT. MOTORE TRASPORTO	TRANSPORT MOTOR DAMPER
13	471244 E	STUD PER FISSAGGIO MOTORE	MOTOR ANCHORAGE STUD
14	472281 V	GRUPPO TESTINA DI STAMPA 24 AGHI	24 NEED PRINT HEAD UNIT
15	473134 J	GRUPPO RULLINO TASTATURA	SENSOR HEAD ROLLER
16	473152 U	PROTEZIONE NASTRO	RIBBON PROTECTOR
17	473132 Q	GR. FOTOSENS. TASTATURA	SENSOR HEAD PHOTOELEC. UNIT
18	473139 X	STAFFA DX GUIDA FLAT	RIGHT FLAT CABLE GUIDE ROD
19	473180 V	GR. COMANDO RULLINI PRESS.	PRESSURE ROLLER DRIVE UNIT
20	473182 K	BALESTRINA PER GR. BOCCOLA	BUSH UNIT LEAF SPRING
21	473151 T	MOLLA PER LEVA DI BLOCC.	LOCKING LEVER SPRING
22	710769 X	PIASTRINO FISS. MOTORE TRASP.	TRANSP. MOTOR ANCHOR. PLATE
23	473155 X	MOLLA TENDICINGHIA	BELT TENSION SPRING
24	472432 L	FLAT TESTINA	PRINT HEAD FLAT CABLE
25	473138 W	STAFFA BLOCCAGGIO FLAT	FLAT CABLE ANCHORAGE ROD
26	473145 V	SCAMBIATORE	EXCHANGER
27	473131 P	INGRANAGGIO COMANDO NASTRO	RIBBON DRIVE GEAR
28	753720 R	RUOTA TRASCIN. NASTRO	RIBBON FEED WHEEL
29	473147 X	LANCIA	LANCE
30	755144 E	MOLLA A COMPRESSIONE	COMPRESSION SPRING
31	473148 G	INGRANAGGIO COMANDO NASTRO	RIBBON DRIVE GEAR





**PR2/S12 - MACCHINA BASE +
MAGNETICO ORIZZONTALE
STANDARD PR2/S12 VERSIONS +
HORIZONTAL MAGNETIC DEVICE**

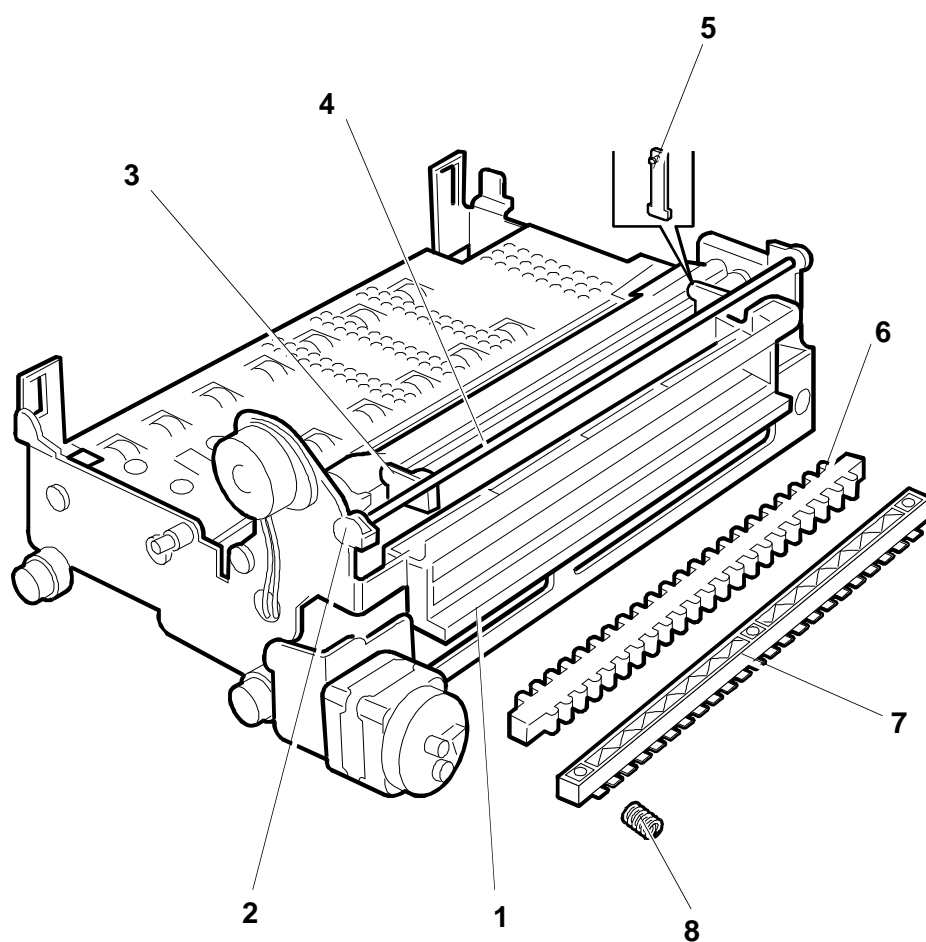
GRUPPO STRUTTURA INF. CON MAGNETICO ORIZZ.
LOWER SECTION WITH HORIZ. MAGN. READER DEVICE

PR2/S12
PR2/S12

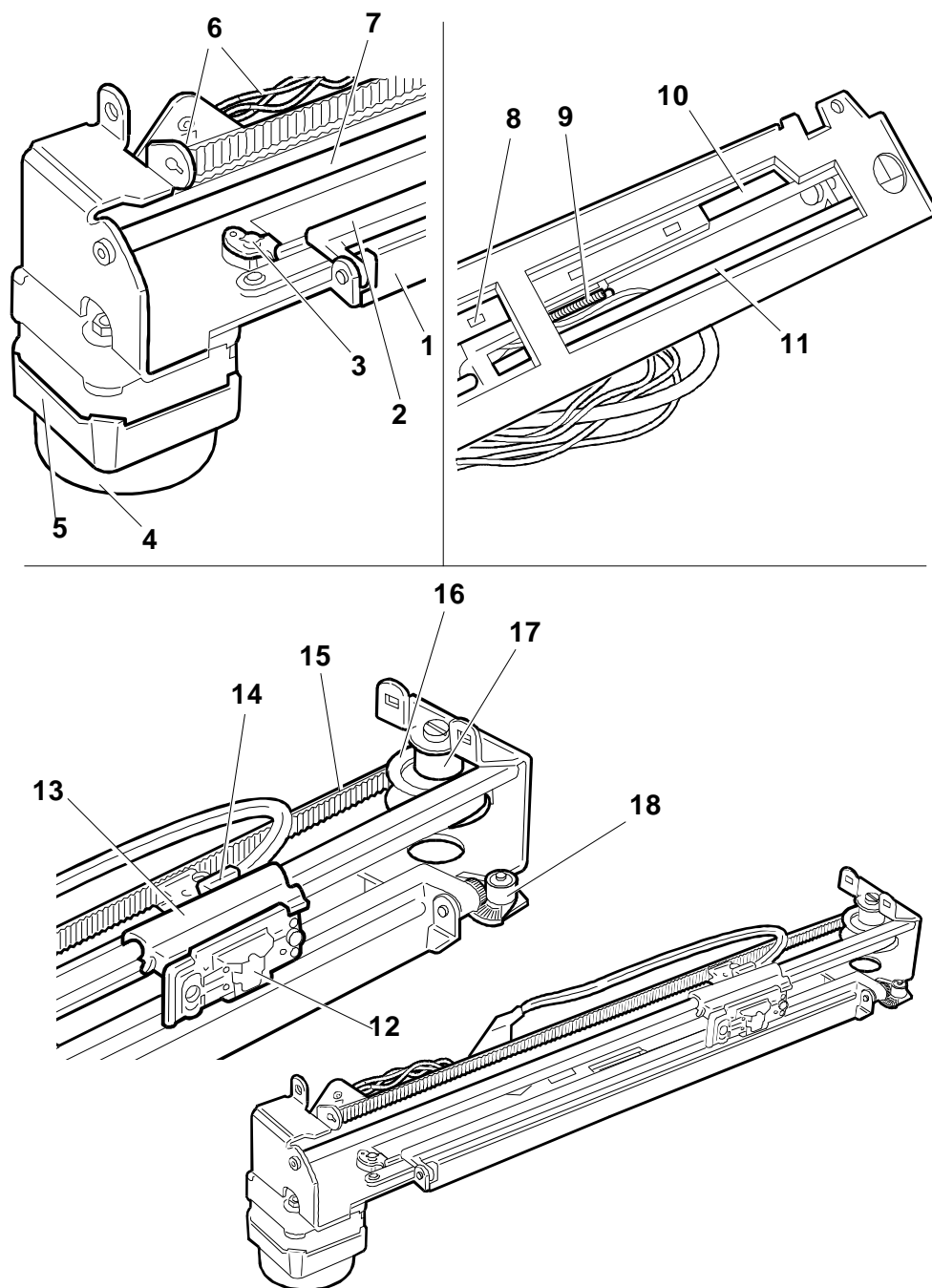
REF.	CODE	DESCRIZIONE	DESCRIPTION
1	473324 Y	CONVOGLIATORE CARTA PER MAGN. ORIZZ.	PAPER FEED FOR HOR.MAG. READER DEVICE
2	473315 X	MANOVELLA PER CAMMA	CAM LEVER
3	473317 Z	MANOVELLA PRESSORE	PRESSURE LEVER
4	473314 W	ALBERO SUPPORTO PRESSORE	PRESSURE SUPPORT ARM
5	473323 X	BIELLA PER MANOVELLA PRESSORE	PRESSURE LEVER ROD
6	473321 V	TAPPETO PER TRAVERSA PRESSORE	PRESSURE BAR PAD
7	473318 A	TRAVERSA PRESSORE	PRESSURE BAR
8	473320 G	MOLLA PRESSORE	PRESSURE SPRING

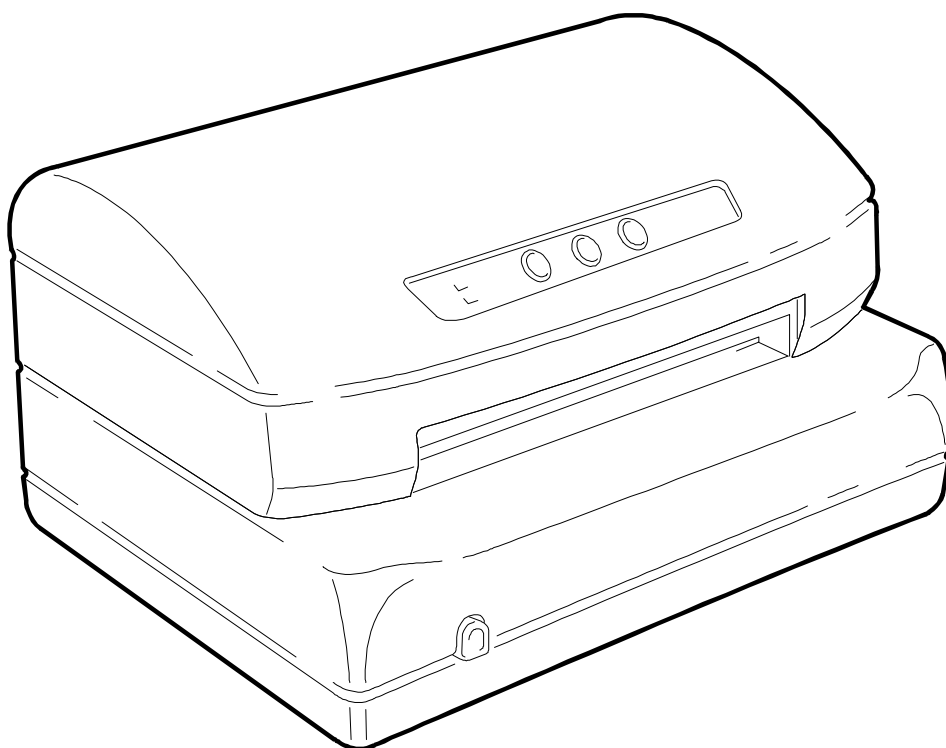
NOTA: Per le parti comuni fare riferimento alla PR2/S10 MACCHINA BASE descritta in precedenza.

NOTE: For parts common to the Standard version PR2/S10 please refer to the preceding section.



REF.	CODE	DESCRIZIONE	DESCRIPTION
1	473300 M	GR. STRUTTURA MAGN. ORIZZ.	HORIZ. MAG. READER DEVICE
2	473306 F	SPORTELLLO DI CHIUSURA	COVER
3	473331 X	PONTE APERTURA SPORTELLLO	FLAP OPENING JOINT
4	710682 H	SMORZATORE MOTORE TRASPORTO	TRANSPORT MOTOR DAMPER
5	473308 R	GRUPPO MOTORE TRASPORTO MAGN. ORIZZ.	HORIZ. MAG. TRANSPORT MOTOR UNIT
6	473330 A	GRUPPO FOTO AZZERAMENTO	PHOTO INITIALIZING UNIT
7	473312 U	BARRA GUIDA SUPERIORE (L=357)	UPPER TRACK (L=357)
8	473305 E	SEMITIRANTE DESTRO	RIGHT BRACE
9	471514 M	MOLLA CHIUSURA SPORTELLLO	FLAP CLOSING SPRING
10	473304 D	SEMITIRANTE SINISTRO	LEFT BRACE
11	473313 V	BARRA GUIDA INFERIORE (L=327)	LOWER TRACK (L=327)
12	471530 Z	GRUPPO TESTINA MAGNETICA ORIZZ.	HORIZ. MAG. DEVICE HEAD UNIT
13	473310 E	CARRELLO TESTINA MAGNETICA	HEAD CARRIAGE
14	471501 Z	STAFFA BLOCCAGGIO TEST. MAGNETICA	LOCKING MAGNETIC HEAD UNIT
15	473311 T	CINGHIA MAGNETICO ORIZZ. (Z=360)	HORIZ. MAG. DEVICE BELT (Z=360)
16	473302 B	PULEGGIA DI RINVIO	SNUB PULLEY
17	473301 A	PERNO PER PULEGGIA	PULLEY PIN
18	473303 C	SETTORE DENTATO	SECTOR GEAR



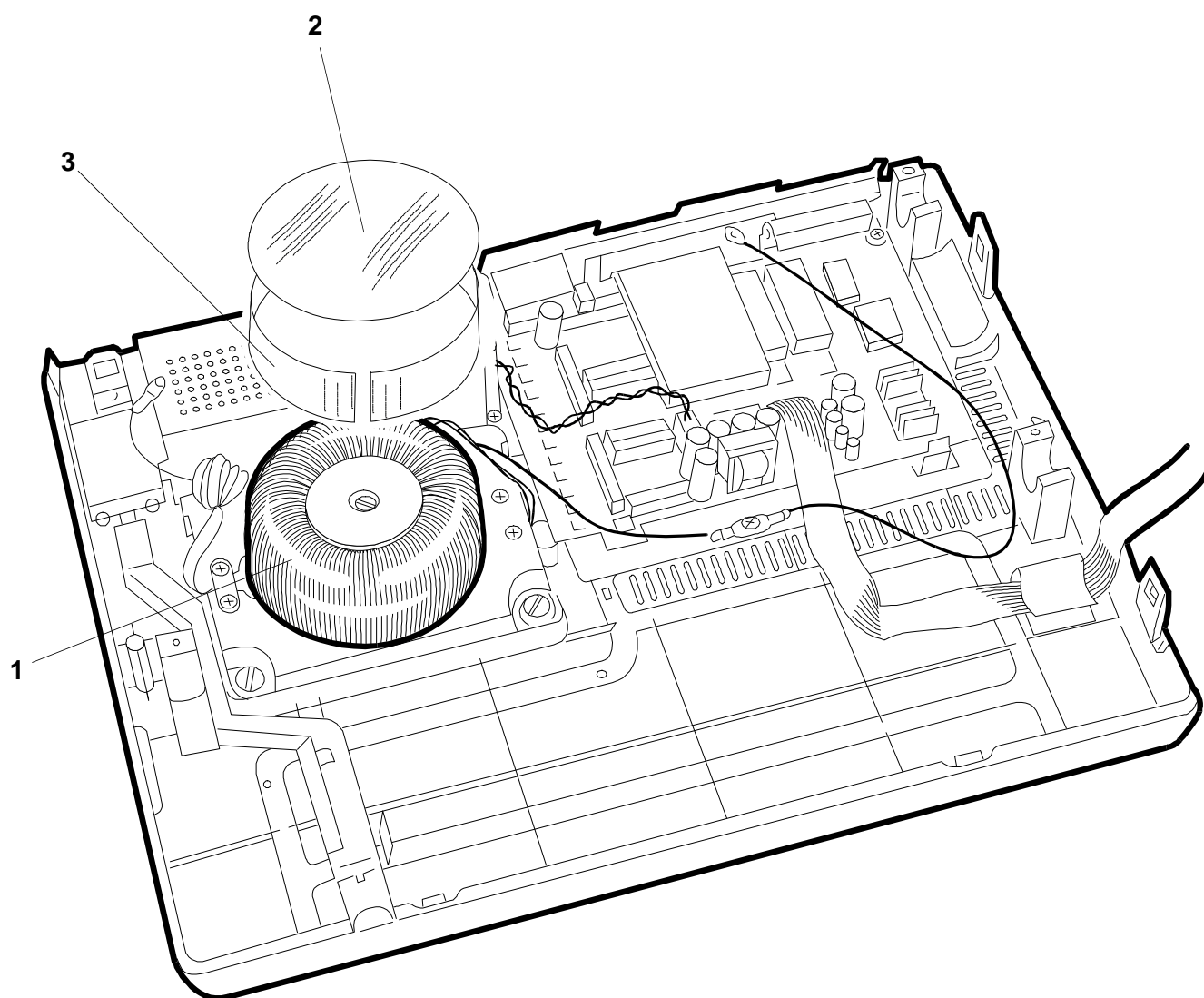


**PR2/S13 - MACCHINA BASE +
MAGNETICO VERTICALE
STANDARD PR2/S12 VERSIONS +
VERTICAL MAGNETIC DEVICE**

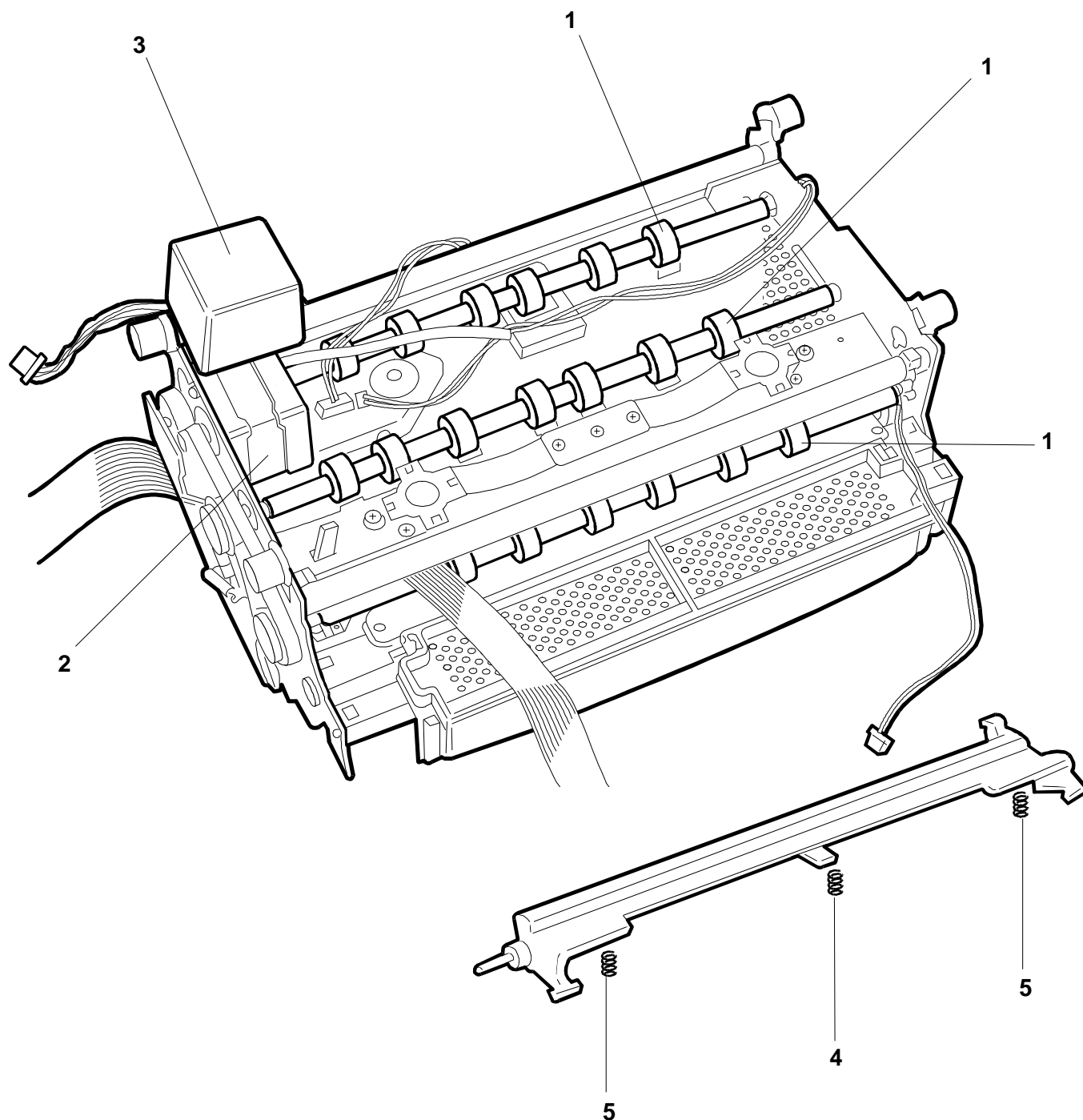
REF.	CODE	DESCRIZIONE	DESCRIPTION
1	473114 N 473116 Q	GRUPPO TRASFORMATORE 230V GRUPPO TRASFORMATORE 110V	230V TRANSFORMER ASSEMBLY 110V TRANSFORMER ASSEMBLY
2	473493 K	MYLAR PROTEZ. SUPER. TRASF. M.V. SX	LEFT V. M. TRASF. UPPER PROTECT . MYLAR
3	473494 L	MYLAR PROTEZ. LATER. TRASF. M.V. SX	LEFT V. M. TRASF. SIDE PROTECT. MYLAR

NOTA: Per le parti comuni fare riferimento alla PR2/S10 MACCHINA BASE descritta in precedenza.

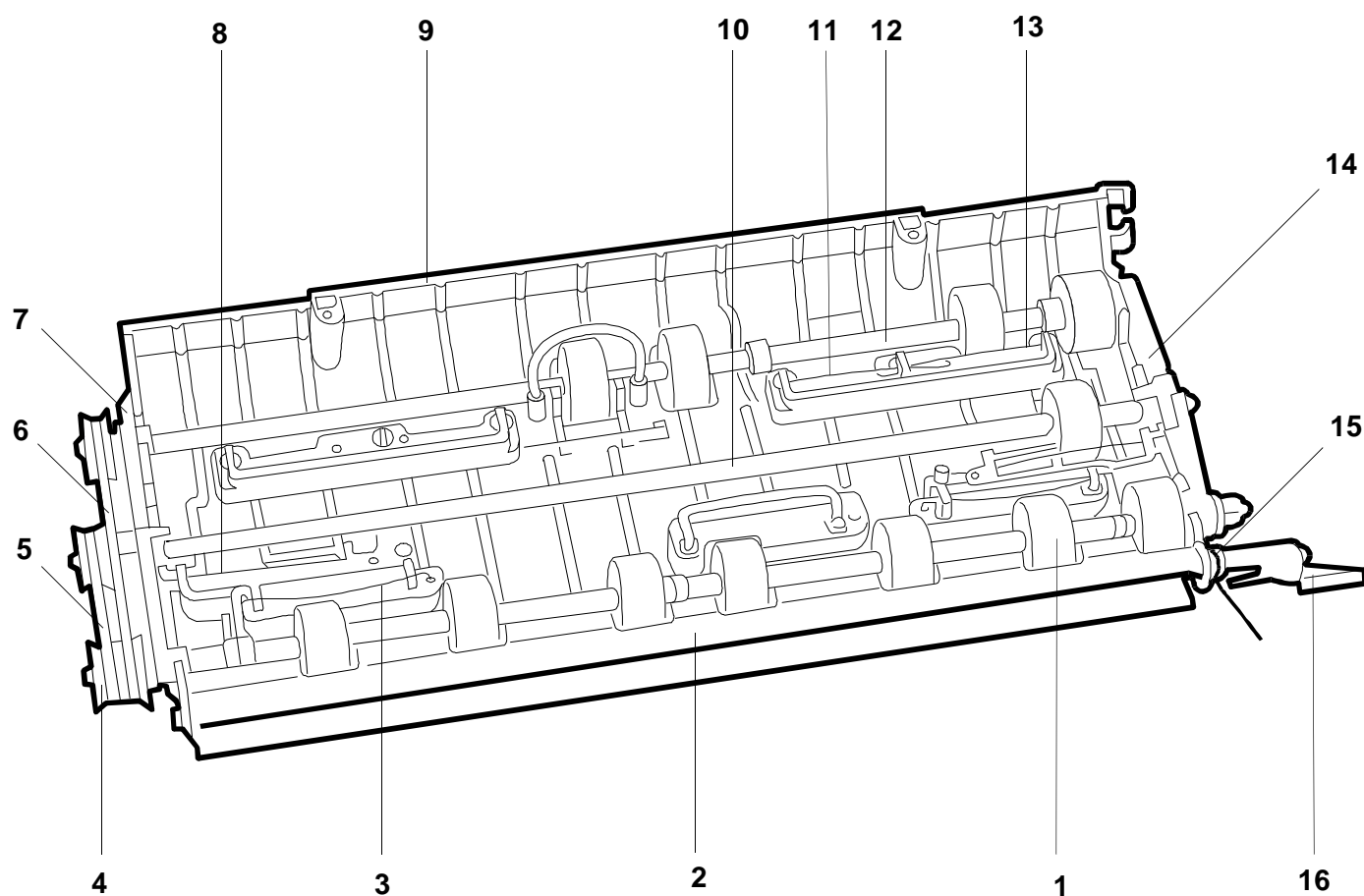
NOTE: For parts common to the Standard version PR2/S10 please refer to the preceding section.



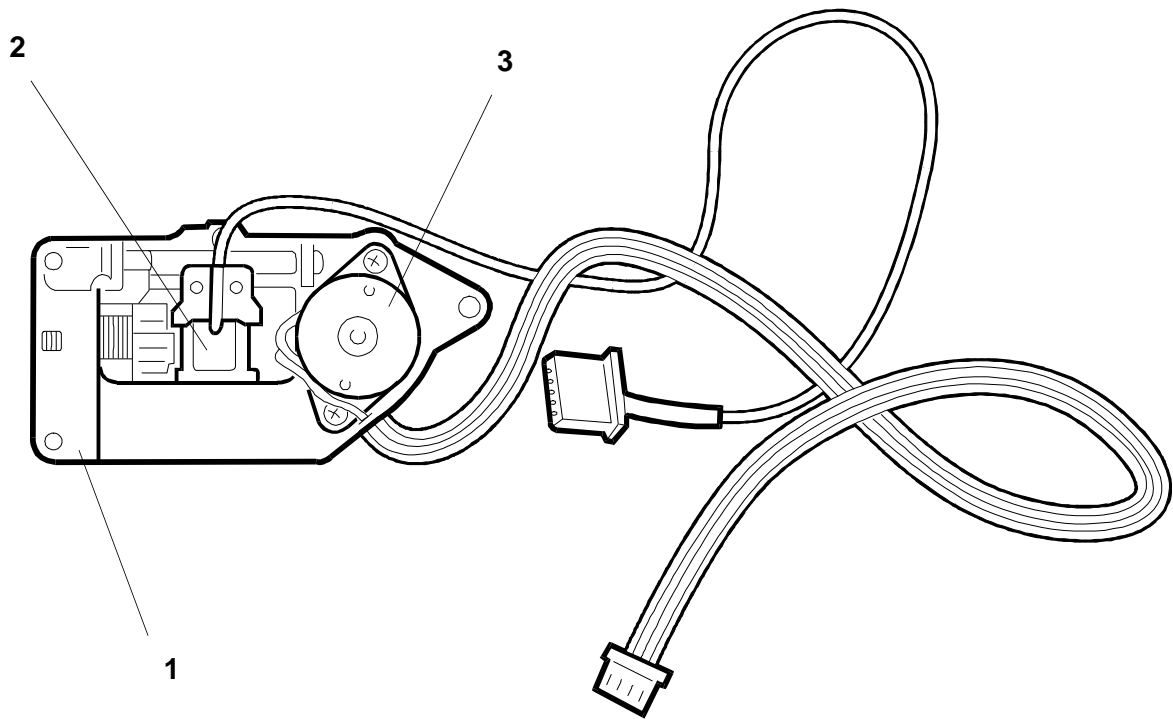
REF.	CODE	DESCRIZIONE	DESCRIPTION
1	473376 C	GR. ALBERI TRASCINAMENTO M.V. SX	LEFT VERTIC. MAGN. FEED SHAFT GROUP
	473396 Z	GR. ALBERI TRASCINAMENTO M.V. DX	RIGHT VERTIC. MAGN. FEED SHAFT GROUP
2	473395 Y	MOTORE INTERLINEA MAGN. VERTIC.	VERTIC. MAGN. LINE SPACING MOTOR
3	473346 E	SCHERMO MOTORE MAGN. VERTIC. DX	RIGHT VERTIC. MAGN. MOTOR SCREEN
4	473083 K	MOLLA PRESSORE CENTRALE	CENTRAL PRESSURE SPRING
5	473100 D	MOLLA PRESSORE LATERALE (Npz = 2)	SIDE PRESSURE SPRING (Pcs = 2)



REF.	CODE	DESCRIZIONE	DESCRIPTION
1	473364 G 473383 U	GR. RULLINI ANTERIORI M.V. SX GR. RULLINI ANTERIORI M.V. DX	LEFT VERTIC. MAGN. FRONTS ROLLER UNIT RIGHT VERTIC. MAGN. FRONTS ROLLER UNIT
2	473390 F	GRUPPO MYLAR PER MAGN. VERTIC.	VERTIC. MAGN. MYLAR GROUP
3	473378 N	BARRA DI TORSIONE - VERDE (Npz = 2)	TORSION BAR - GREEN (Pcs = 2)
4	473370 J	PULEGGIA PER MAGN. VERTICALE	VERTIC. MAGN. PULLEY
5	473353 D	CINGHIA DENTATA Z=55	BELT TIMING Z=55
6	473348 Q	CINGHIA DENTATA Z=88	BELT TIMING Z=88
7	473355 F	SUPPORTO ALBERO	SHAFT SUPPORT
8	473298 F	BARRA DI TORSIONE - GIALLO (Npz = 2)	TORSION BAR - YELLOW (Pcs = 2)
9	473354 E 473382 T	SUPPORTO PRESSORI M.V. SX SUPPORTO PRESSORI M.V. DX	LEFT VERTIC. MAGN. PRESSURE SUPPORT RIGHT VERTIC. MAGN. PRESSURE SUPPORT
10	473372 G 473386 X	GRUPPO ALBERO CONTRASTO M.V. SX GRUPPO ALBERO CONTRASTO M.V. DX	LEFT VERT.MAGN. CONTRAST SHAFT GROUP RIGHT VERT.MAGN. CONTRAST SHAFT GROUP
11	473295 U	BARRA DI TORSIONE - ROSSO (Npz = 1)	TORSION BAR - RED (Pcs = 1)
12	473366 A 473385 W	GR. ALBERO POSTERIORE M.V. SX GR. ALBERO POSTERIORE M.V. DX	LEFT VERTIC. MAGN. REAR SHAFT GROUP RIGHT VERTIC. MAGN. REAR SHAFT GROUP
13	473296 V	BARRA DI TORSIONE - BLU (Npz = 1)	TORSION BAR - BLUE ((Pcs = 1)
14	473356 G	BOCCOLA PRESSORE M.V.	VERTIC. MAGN. PRESSURE BUSH
15	473394 X	MOLLA A SPILLO M.V.	VERTIC. MAGN. PIN SPRING
16	473393 W	MANOVELLA M.V.	VERTIC. MAGN. HANDLE



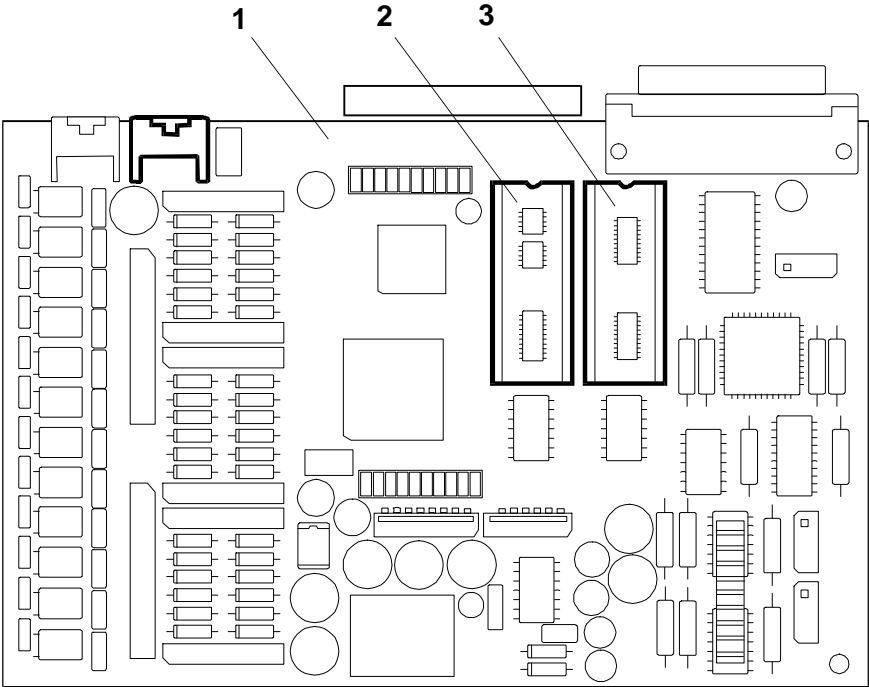
REF.	CODE	DESCRIZIONE	DESCRIPTION
1	473297 W	GR. SUPPORTO MAGN. VERTIC.	VERTIC. MAG. SUPPORT GROUP
2	473351 B	GR. TESTINA MAGNETICA MAGN. VERTIC.	VERTIC. MAGN. DEVICE HEAD UNIT
3	473344 C	GRUPPO MOTORE MAGN. VERTIC.	VERTIC. MAGN. MOTOR UNIT

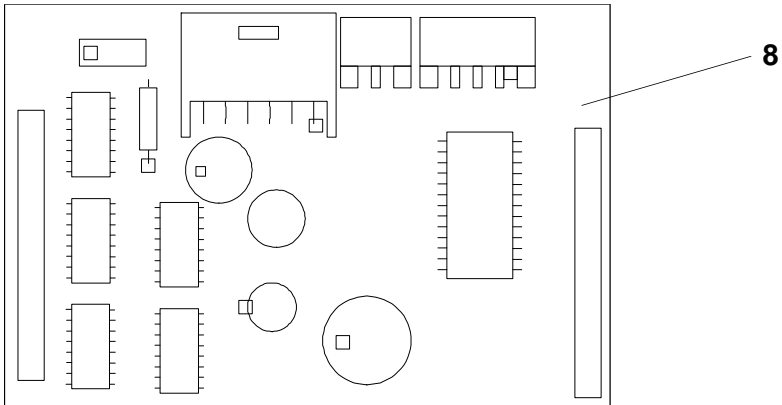
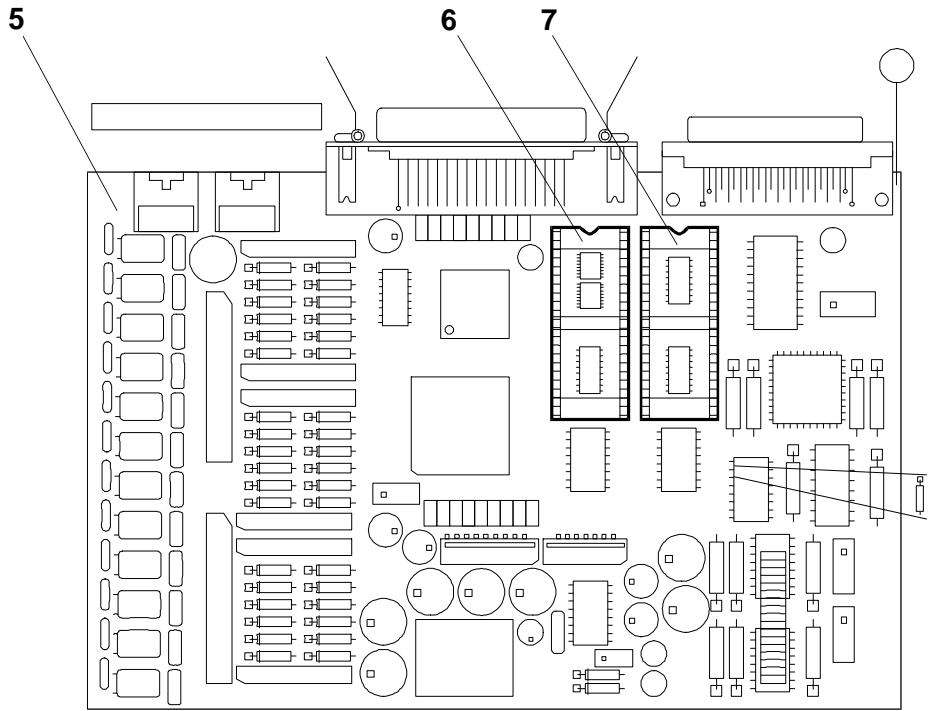
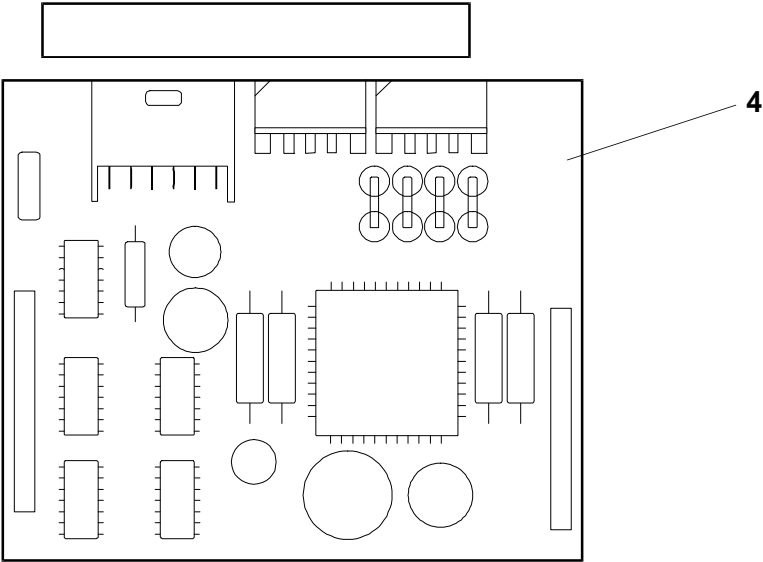


PIASTRE ELETTRONICHE PR2/S10-S12/S13

PR2/S10-S12/S13 ELECTRONIC BOARDS

REF.	CODE	DESCRIZIONE	DESCRIPTION
1	612765 D	BAPR2 - PIASTRA BASE SERIALE	SERIAL BASE BOARD BAPR2
2	474542 U 474533 K	EPROM "PE 69" FIRMWARE STANDARD EPROM "PE 60" FIRMWARE DAECO	STANDARD EPROM FIRMWARE "PE 69" DAECO EPROM FIRMWARE "PE 60"
3	474415 M 474417 P	EPROM "PE 56" GEN. CARATTERI STAND. EPROM "PE 56" GEN. CARATTER I DAECO	STANDARD EPROM "PE 60" GEN. CHARS. DAECO EPROM "PE 60" GEN. CHARS.
4	474552 W	PR2 MAGN. PIASTRINO MAGN.ORIZZ.	PR2 MAGN. BOARD HORIZ. MAGN. DEVICE
5	612786 T	BAPR2P PIASTRA BASE SERIALE-PARALL.	BAPR2P BOARD SERIAL-PARALL.
6	477538 Y 477537 P	EPROM "PE 65" FIRMWARE STANDARD EPROM "PE 66" FIRMWARE DAECO	STANDARD EPROM FIRMWARE "PE 65" DAECO EPROM FIRMWARE "PE 66"
7	474415 M 474417 P	EPROM "PE 56" GEN. CARATTERI STAND. EPROM "PE 56" GEN. CARATTER I DAECO	STANDARD EPROM "PE 60" GEN. CHARS. DAECO EPROM "PE 60" GEN. CHARS.
8	474396 S	PR2 VER. PIASTRINO MAGN.VERTIC.	PR2 VER. BOARD VERTIC. MAGN. DEVICE





REF.	CODE	DESCRIZIONE	DESCRIPTION
1	750971 J	DADO M4 BLOCC. PONTE COM. PRESSORI	LINK FOR PRESSURE MECHANISM, M4 NUT
2	923032 A	VITE TRILOBATA M3x6	THREE LOBED SCREW M3x6
3	920617 S	VITE TESTA CILINDRICA M4x16	CHEESEHEAD SCREW M4X16
4	924710 T	VITE AUTOFORMANTE Ø 2,2x6,5	THREAD-FOR. SCREW Ø 2.2X6.5
5	924712 R	VITE AUTOFORMANTE Ø 2,2x9,5	THREAD-FOR. SCREW Ø 2.2X9.5
6	927005 L	VITE SCREWPLAST Ø 2,9x6,5	SCREWPLAST SCREW Ø 2.9X6.5
7	927006 M	VITE SCREWPLAST Ø 2,9x9,5	SCREWPLAST SCREW Ø 2.9X9.5
8	927013 B	VITE SCREWPLAST Ø 2,9x13	SCREWPLAST SCREW Ø 2.9X13
9	938220 E	DADO M3	M3 NUT
10	940098 A	RONDELLA Ø 3,2x6	WASHER Ø 3.2X6
11	940096 Y	RONDELLA Ø 2,7x5	WASHER Ø 2.7X5
12	940095 X	RONDELLA Ø 2,2x5	WASHER Ø 2.2X5
13	945230 F	STAFFA Ø 2,3	ROD Ø 2.3
14	945320 H	STAFFA Ø 3,2	ROD Ø 3.2
15	945500 F	STAFFA Ø 5	ROD Ø 5
16	926319 Z	STUD FILETTATO M3x4x1,5	STUD RIVET M3X4X1.5
17	664277 Q	VITE DI MASSA IN OTTONE M4	BRASS EARTH SCREW
18	920007 T	VITE TESTA CILINDRICA M2x8	CHEESEHEAD SCREW M2X8
19	921460 W	VITE TESTA CILINDRICA M3x8	CHEESEHEAD SCREW M3X8
20	920057 U	VITE TESTA CILINDRICA M46	CHEESEHEAD SCREW M46
21	921440 S	VITE TESTA CILINDRICA M2,5x4	CHEESEHEAD SCREW M2.5X4
22	473328 C	FASCETTA PER SMORZATORE	DAMPER CLAMP
23	723491 K	COLONNINA ESAGONALE M3X5	HEXAGONAL WHEEL BOX M3X5
24	966321 T	RONDELLA DENT. DIAM. 3,2X7	TOOTHED WASHER I 3.2X7
25	945400 B	STAFFA DIAM. 4	ROD Ø 4
26	920843 V	VITE TESTA ESAG. M3X6	HEX. HEADED SCREW M3X6
27	920864 S	VITE TESTA ESAG. CON INT. M4X6	HEX. HEADED SCREW M4X6
28	945700 P	STAFFA Ø 7	ROD Ø 7

INDICE GENERALE DEI CODICI

GENERAL CODES INDEX

INDICE GENERALE DEI CODICI - GENERAL CODES INDEX

CODICE CODE	PAGINA PAGE	CODICE CODE	PAGINA PAGE	CODICE CODE	PAGINA PAGE
470925U	6	473101S	12	473313V	22
471244E	16	473103U	14	473314W	20
471501Z	22	473107Y	14	473315X	20
471514M	22	473108H	6	473317Z	20
471530Z	22	473109A	6	473318A	20
471839T	6	473114N	26	473320G	20
472281V	16	473116Q	26	473321V	20
472432L	16	473123P	16	473323X	20
472439T	6	473127K	16	473324Y	20
473006W	8	473129V	16	473328C	36
473013L	8	473130S	16	473330A	22
473018Z	8	473131P	16	473331X	22
473020X	10	473132Q	16	473332Y	12
473021L	10	473133R	16	473344C	32
473024P	10	473134J	16	473346E	28
473028T	8	473137M	16	473348Q	30
473030Z	6	473138W	16	473351B	32
473031N	6	473139X	16	473353D	30
473032P	6	473140C	16	473354E	30
473033Q	6	473141Z	16	473355F	30
473034R	6	473145V	16	473356G	30
473040B	10	473147X	16	473364G	30
473047W	10	473148G	16	473366A	30
473048F	10	473149H	16	473370J	30
473049G	10	473150E	16	473372G	30
473050D	10	473151T	16	473376C	28
473051S	10	473152U	16	473378N	30
473052T	10	473155X	16	473382T	30
473053U	10	473156Y	16	473383U	30
473054V	10	473160G	14	473385W	30
473056X	10	473166S	14	473386X	30
473057Y	10	473167T	14	473390F	30
473058H	10	473171X	14	473393W	30
473059A	10	473172Y	14	473394X	30
473063W	10	473173Z	14	473395Y	28
473064X	10	473174S	10	473396Z	28
473065Y	10	473175T	12	473493K	26
473066Z	10	473175T	14	473494L	26
473067S	10	473180V	16	473539Y	4
473070H	8	473182K	16	473540D	4
473071W	10	473191L	12	473542T	6
473072X	8	473192M	12	473543U	4
473073Y	8	473192M	14	473544V	4
473074Z	8	473295U	30	473545W	4
473075S	8	473296V	30	473559C	4
473076T	12	473297W	32	474396S	34
473077U	12	473298F	30	474399D	6
473078D	12	473300M	22	474415M	34
473083K	12	473301A	22	474417P	34
473083K	28	473302B	22	474533K	34
473084L	8	473303C	22	474542U	34
473085M	12	473304D	22	474552W	34
473086N	8	473305E	22	477537P	34
473087P	12	473306F	22	477538Y	34
473088Y	12	473308R	22	612765D	34
473091K	12	473310E	22	612786T	34
473100D	12	473311T	22	664277Q	36
473100D	28	473312U	22	710682H	22

INDICE GENERALE DEI CODICI - GENERAL CODES INDEX

CODICE CODE	PAGINA PAGE	CODICE CODE	PAGINA PAGE	CODICE CODE	PAGINA PAGE
710769X	16				
723349K	6				
723352E	6				
723491K	36				
750971J	36				
751171D	10				
751272J	16				
752610J	4				
753720R	16				
755144E	16				
759410R	4				
759413G	6				
920007T	36				
920057U	36				
920617S	36				
920843V	36				
920864S	36				
921440S	36				
921460W	36				
923032A	36				
924710T	36				
924712R	36				
926319Z	36				
927005L	36				
927006M	36				
927013B	36				
938220E	36				
940095X	36				
940096Y	36				
940098A	36				
945230F	36				
945320H	36				
945400B	36				
945500F	36				
945700P	36				
966321T	36				
5183323H	6				
5358331H	6				
5373185X	6				

STATO DI AGGIORNAMENTO UPDATING STATUS

[illegible]