

# PGL 12

## SPARE PARTS CATALOGUE

### INDICE

#### PGL 12

COPERTURE .....	Pag.	A - 2
STRUTTURA 1 (1/4) .....	"	A - 3
STRUTTURA 1 (2/4) .....	"	A - 4
STRUTTURA 1 (3/4) .....	"	A - 5
STRUTTURA 1 (4/4) .....	"	A - 6
STRUTTURA 2 (1/2) .....	"	A - 7
STRUTTURA 2 (2/2) .....	"	A - 8
CASSETTO .....	"	A - 9
GRUPPO FUSORE .....	"	A-10
GRUPPO TRASPORTO (1/2) .....	"	A-11
GRUPPO TRASPORTO (2/2) .....	"	A-12

INDICE GENERALE DEI CODICI .....	"	A-13
----------------------------------	---	------

### INDEX

#### PGL 12

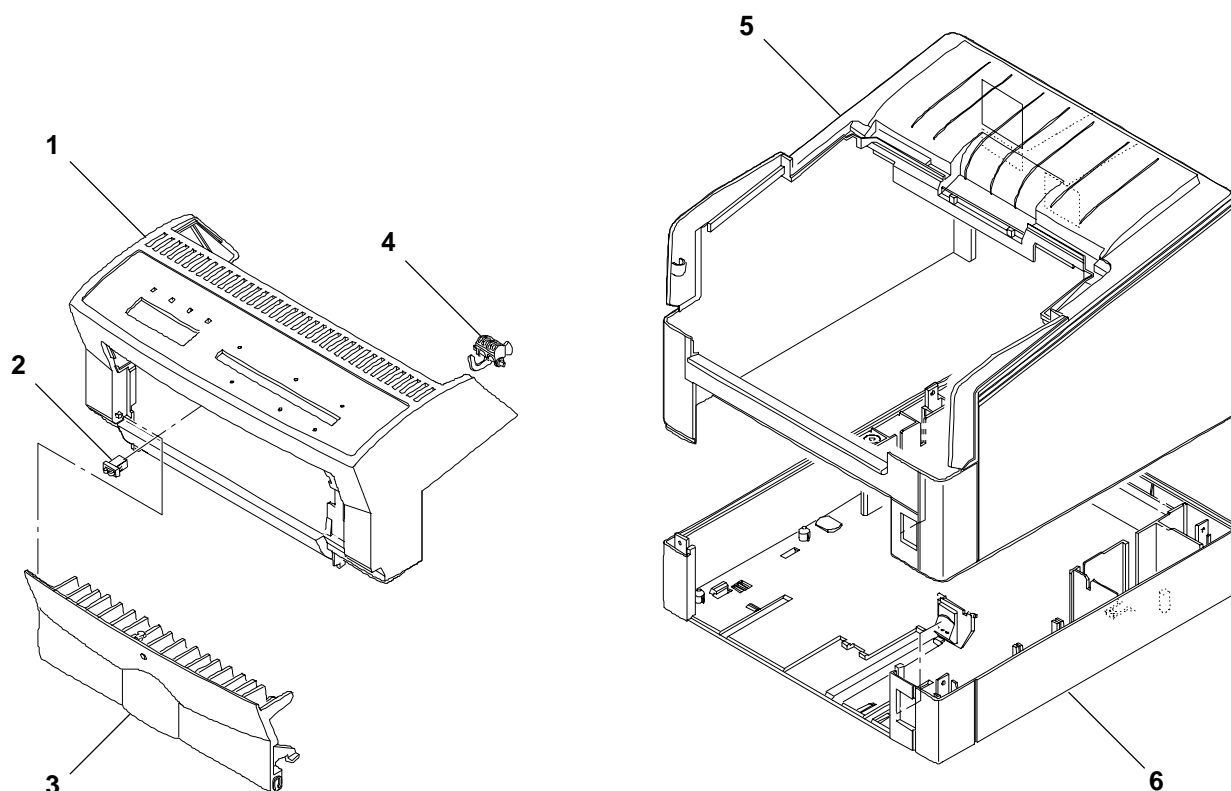
COVERS .....	Page	A - 2
FRAME 1 (1/4) .....	"	A - 3
FRAME 1 (2/4) .....	"	A - 4
FRAME 1 (3/4) .....	"	A - 5
FRAME 1 (4/4) .....	"	A - 6
FRAME 2 (1/2) .....	"	A - 7
FRAME 2 (2/2) .....	"	A - 8
CASSETTE .....	"	A - 9
FUSER ASSEMBLY .....	"	A -10
TRANSPORT UNIT (1/2) .....	"	A -11
TRANSPORT UNIT (2/2) .....	"	A -12

GENERAL CODES INDEX .....	"	3-13
---------------------------	---	------

## COPERTURE COVERS

PGL 12

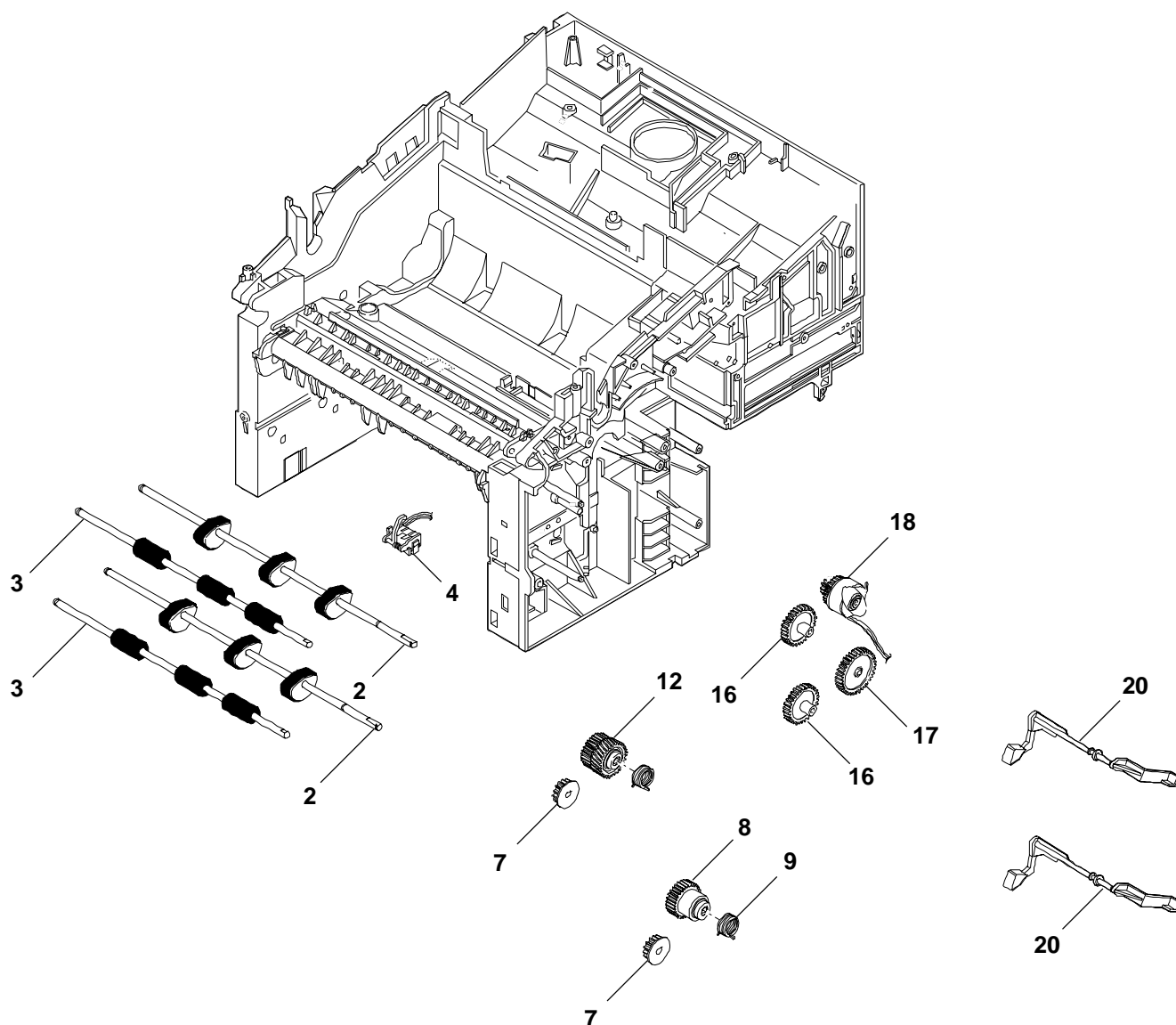
REF.	CODE	DESCRIZIONE	DESCRIPTION
1	576429 Z	GRUPPO PANNELLO ANTERIORE	FRONT PANEL ASSEMBLY
2	576430 W	CHIUSURA A SCATTO COPERTURA ANTER.	FRONT COVER LATCH
3	576431 K	COPERTURA ACCESSO DUPLEX	DUPLEX ACCESS COVER
4	576432 L	ATTUATORE SENSORE USCITA CARTA	PAPER EXIT SENSOR ACTUATOR
5	576433 M	COPERTURA SUPERIORE	UPPER COVER
6	576434 N	COPERTURA FONDELLO	BOTTOM COVER



# STRUTTURA 1 (1/4) FRAME 1 (1/4)

PGL 12

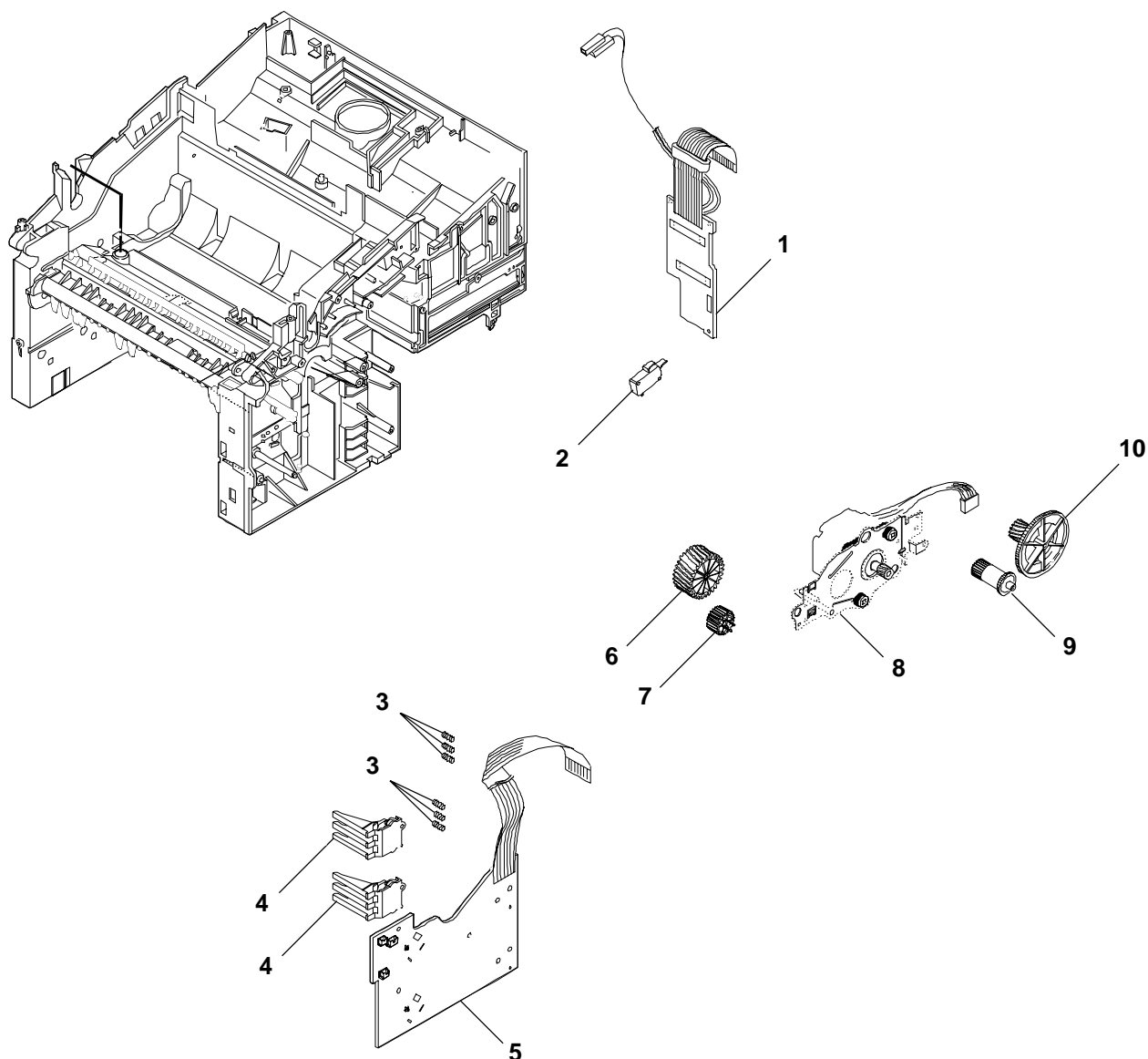
REF.	CODE	DESCRIZIONE	DESCRIPTION
2	576435 P	RULLINO TRASCINAMENTO CARTA	PAPER FEED ROLLER
3	576436 Q	RULLINO TRASPORTO	TRANSPORT ROLLER
4	576437 R	SENSORE REGISTRAZIONE	REGISTRATION SENSOR
7	576438 S	INGRANAGGIO RULLINO TRASPORTO	TRANSPORT ROLLER GEAR
8	576439 T	INGRANAGGIO TRASCINAM. CARTA INFER.	LOWER PAPER FEED GEAR
9	576440 G	MOLLA INNESTO	CLUTCH SPRING
12	576441 V	INGRANAGGIO TRASCINAM. CARTA SUPER.	UPPER PAPER FEED GEAR
16	576442 W	INGRANAGGIO Z=31	GEAR T=31
17	576443 X	INGRANAGGIO Z=39	GEAR T=39
18	576444 Y	INNESTO REGISTRAZIONE	REGISTRATION CLUTCH
20	576445 Z	ATTUATORE FINE CARTA	PAPER EMPTY ACTUATOR



# STRUTTURA 1 (2/4) FRAME 1 (2/4)

PGL 12

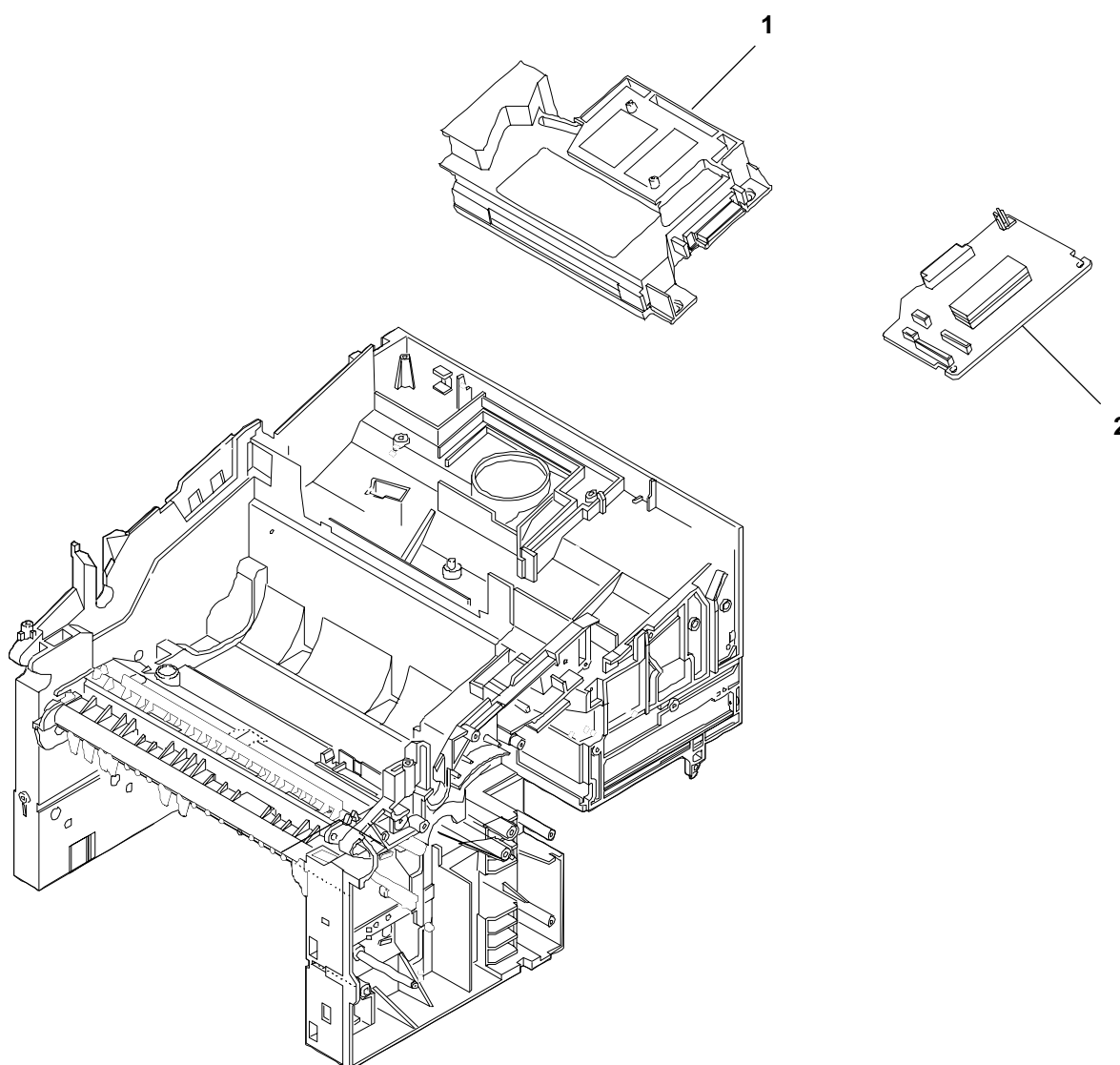
REF.	CODE	DESCRIZIONE	DESCRIPTION
1	576446 S	PIASTRA PILOTAGGIO MOTORE	MOTOR DRIVER PWB
2	576447 T	INTERRUTTORE DI SICUREZZA	SAFETY SWITCH
3	576448 C	MOLLA PER RIVELATORE FORMATO	SIZE DETECT SPRING
4	576449 D	LEVA PER RIVELATORE FORMATO	SIZE DETECT LEVER
5	576450 A	PIASTRA CASSETTO	CASSETTE PWB
6	576451 X	INGRANAGGIO Z=36	GEAR T=36
7	576452 Y	INGRANAGGIO Z=36	GEAR T=30
8	576453 Z	GRUPPO MOTORE PRINCIPALE	MAIN DRIVE MOTOR ASSEMBLY
9	576454 S	INGRANAGGIO Z=54/24	GEAR T=54/24
10	576455 T	INGRANAGGIO	GEAR



# STRUTTURA 1 (3/4) FRAME 1 (3/4)

PGL 12

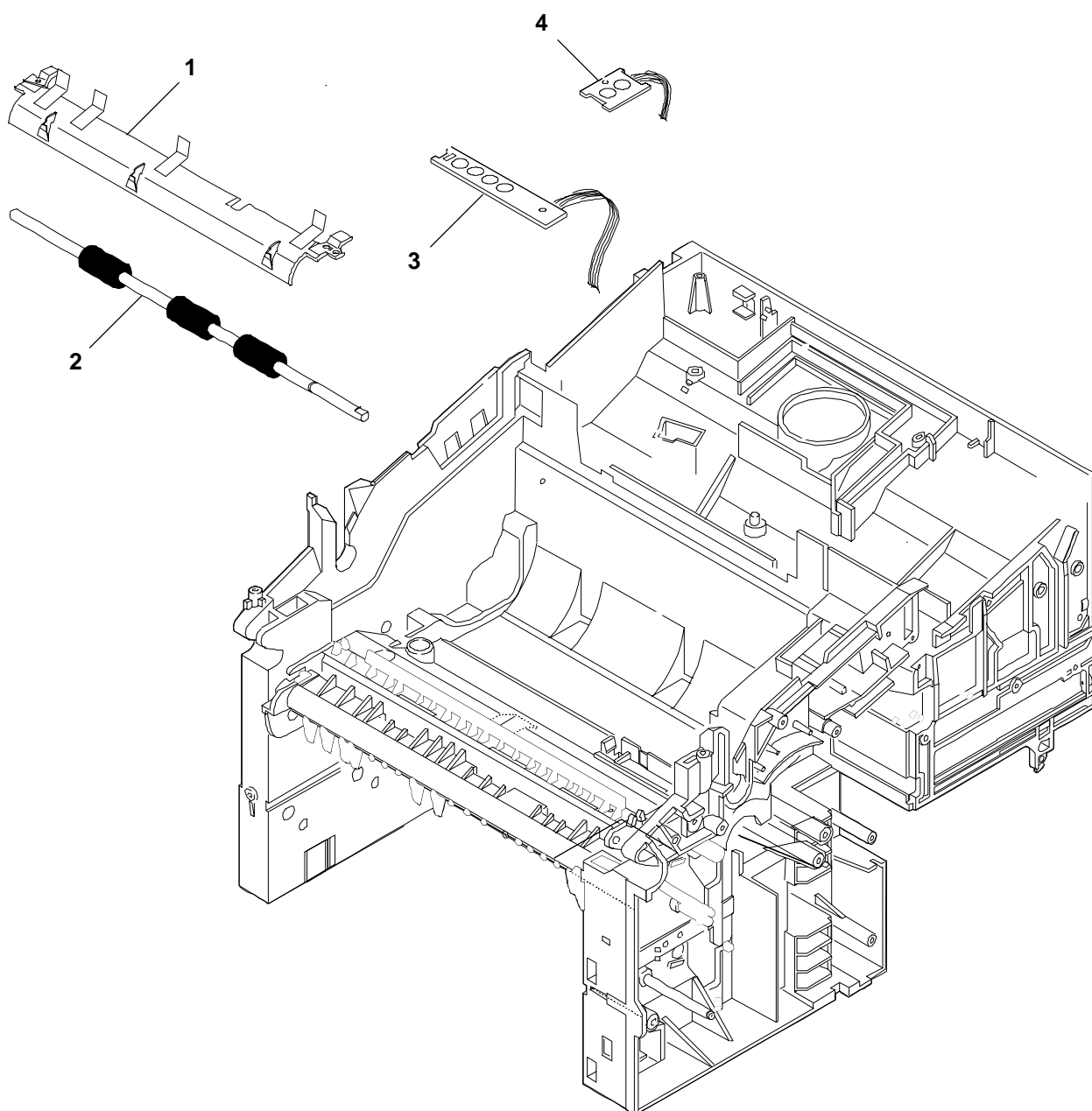
REF.	CODE	DESCRIZIONE	DESCRIPTION
1	576456 U	GRUPPO LASER	LASER ASSEMBLY
2	576457 V	PIASTRA BASE STAMPANTE	PRINTER CONTROLLER PWB



# STRUTTURA 1 (4/4) FRAME 1 (4/4)

PGL 12

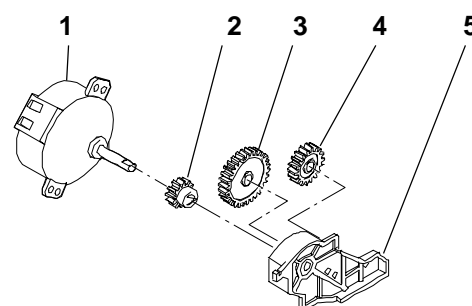
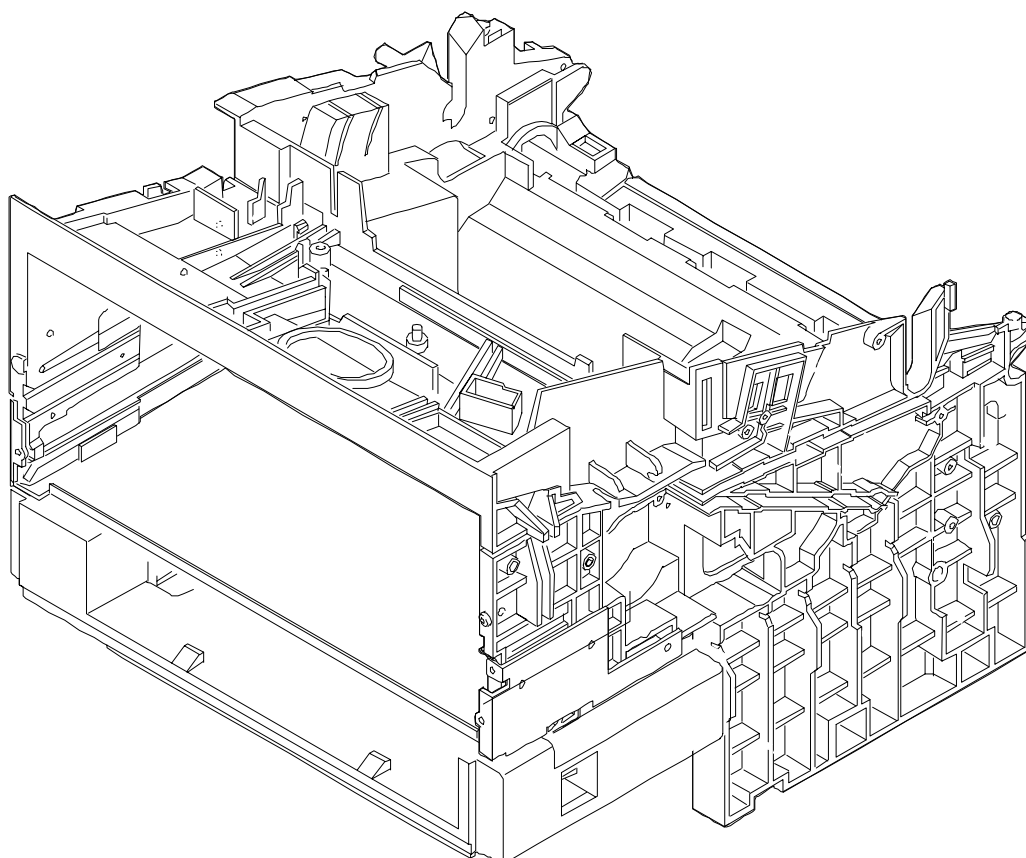
REF.	CODE	DESCRIZIONE	DESCRIPTION
1	576458 E	GRUPPO GUIDA CARTA	PAPER GUIDE ASSEMBLY
2	576459 F	RULLINO REGISTRAZIONE	REGISTER ROLLER
3	576460 C	PIASTRA SENSORE TONER	TONER SENSOR PWB
4	576461 Z	PIASTRA CONNESSIONE TAMBURO	DRUM CONNET PWB



## STRUTTURA 2 (1/2) FRAME 2 (1/2)

PGL 12

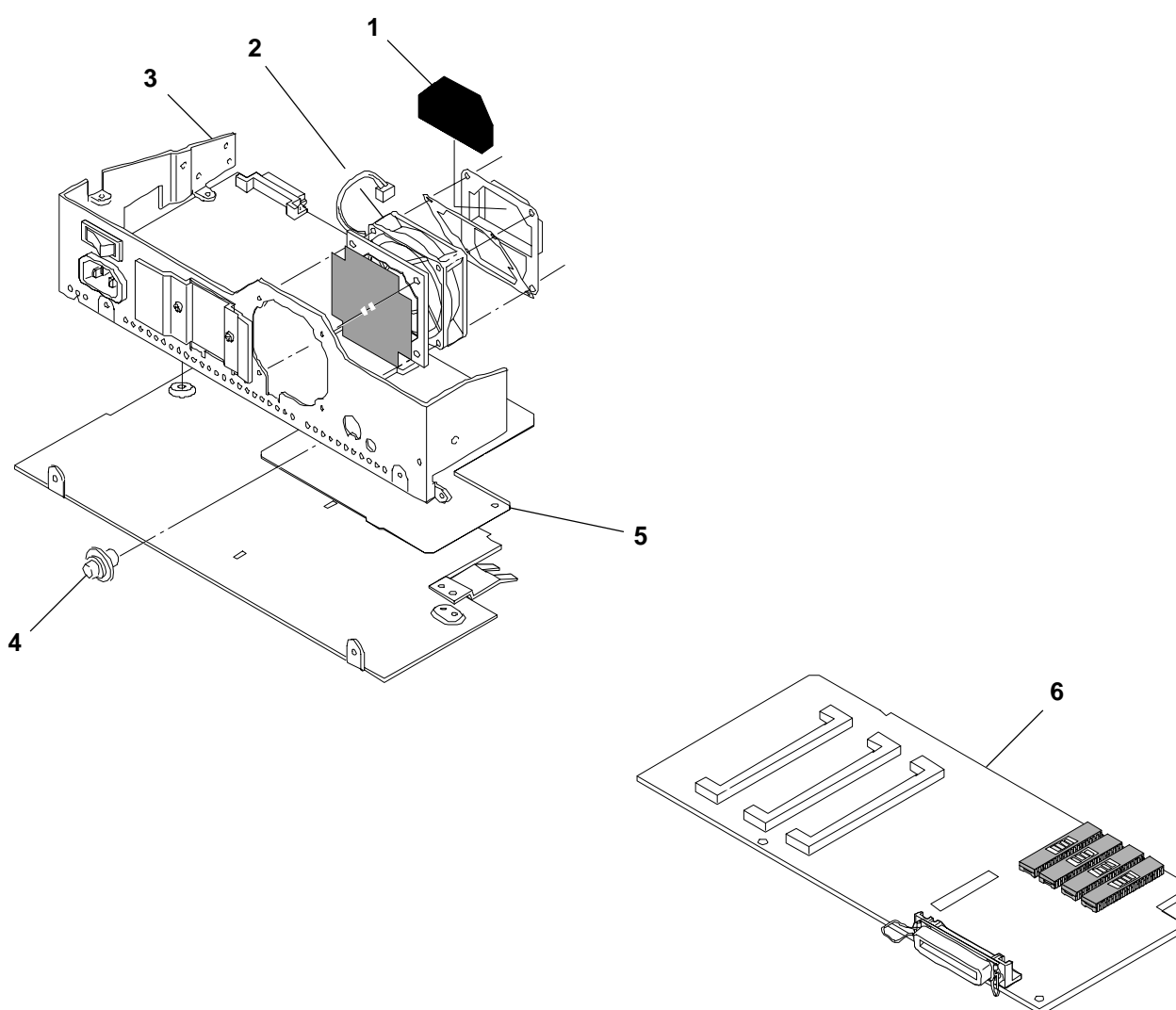
REF.	CODE	DESCRIZIONE	DESCRIPTION
1	576462 S	MOTORE TONER	TONER MOTOR
2	576463 T	INGRANAGGIO Z=15	GEAR T=15
3	576464 U	INGRANAGGIO Z=40	GEAR T=40
4	576465 V	INGRANAGGIO Z=26	GEAR T=26
5	576466 W	BRACCIO TONER	TONER ARM



## STRUTTURA 2 (2/2) FRAME 2 (2/2)

PGL 12

REF.	CODE	DESCRIZIONE	DESCRIPTION
1	576467 X	FILTRO OZONO	OZONE FILTER
2	576468 G	MOTORE VENTILATORE	FAN MOTOR
3	576469 H	ALIMENTATORE BASSA TENSIONE	LOW VOLTAGE POWER SUPPLY
4	576470 E	MANOPOLA REGOLAZIONE DENSITA' TONER	TONER DENSITY CONTROL KNOB
5	576471 T	ALIMENTATORE ALTA TENSIONE	HIGH VOLTAGE POWER SUPPLY
6	576472 U	PIASTRA BASE SISTEMA	SYSTEM CONTROLLER PWB

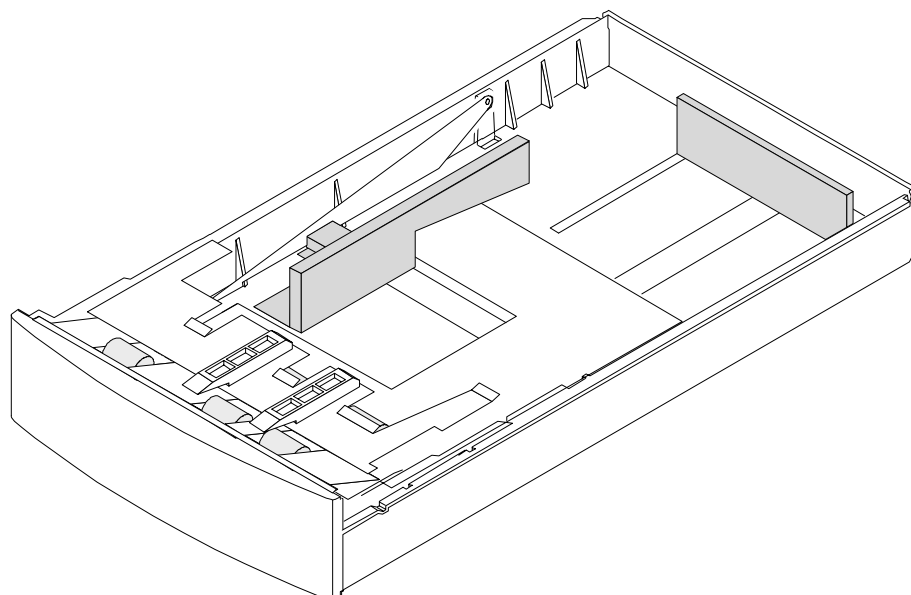
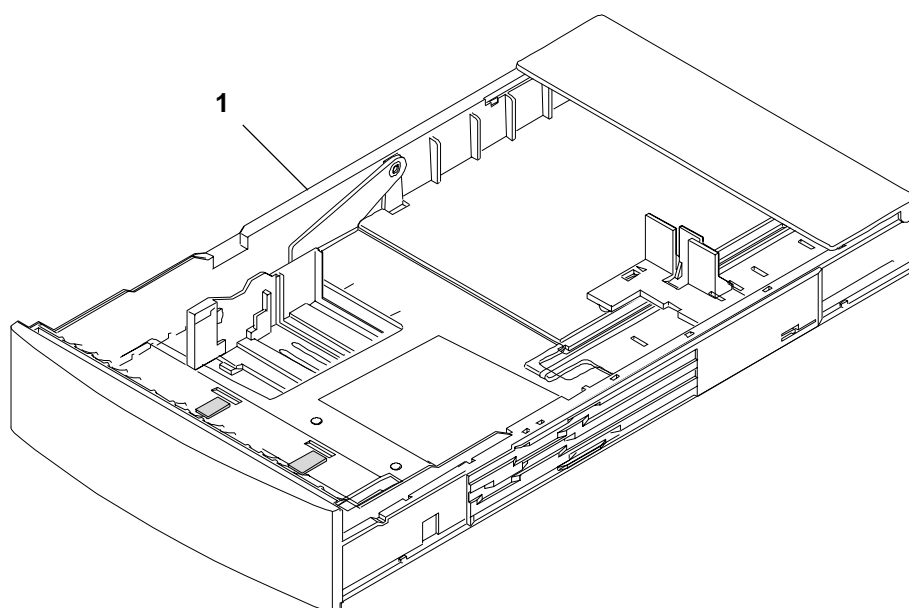




# CASSETTO CASSETTE

PGL 12

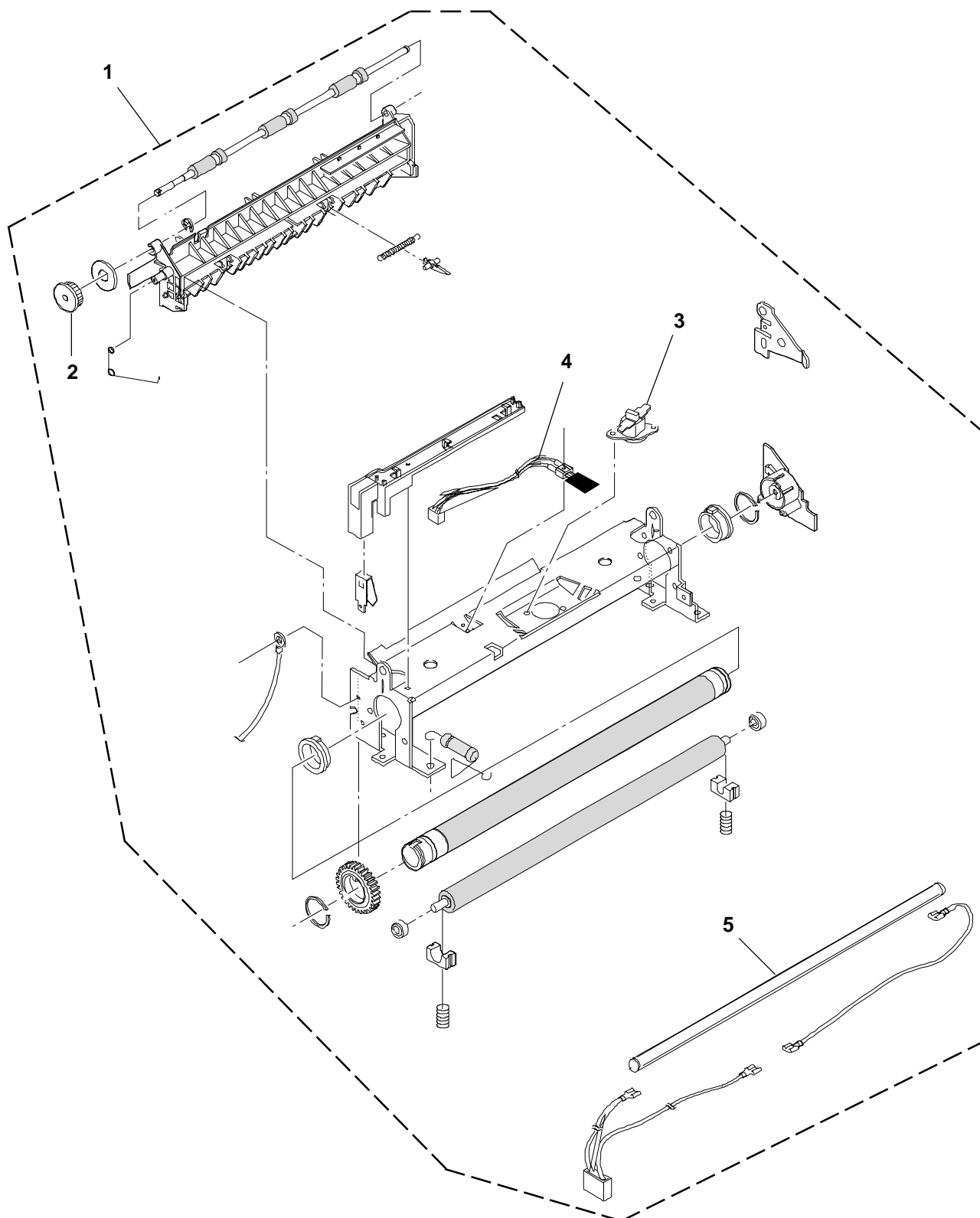
REF.	CODE	DESCRIZIONE	DESCRIPTION
1	576490 T	CASSETTO REGOLABILE	ADJUSTABLE CASSETTE



# GRUPPO FUSORE FUSER ASSEMBLY

PGL 12

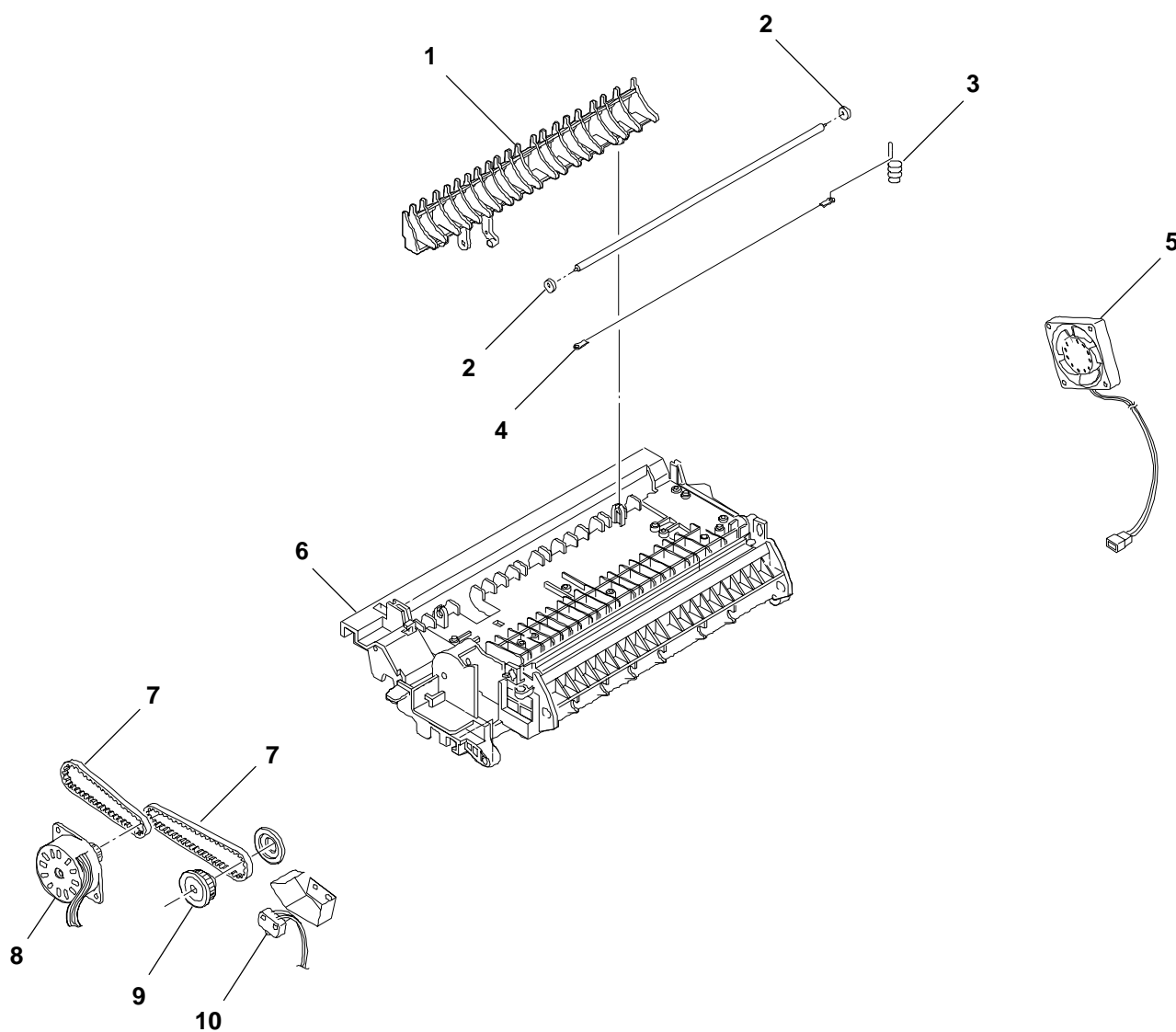
REF.	CODE	DESCRIZIONE	DESCRIPTION
1	576489 W	GRUPPO FUSORE	FUSER ASSEMBLY
2	576485 J	PULEGIA Z=24	PULLEY T=24
3	576486 K	TERMOSTATO	THERMOSTAT
4	576487 L	TERMISTORE	THERMISTOR
5	576488 V	LAMPADA RISCALDATORE 220 V.	HEATER LAMP 220V



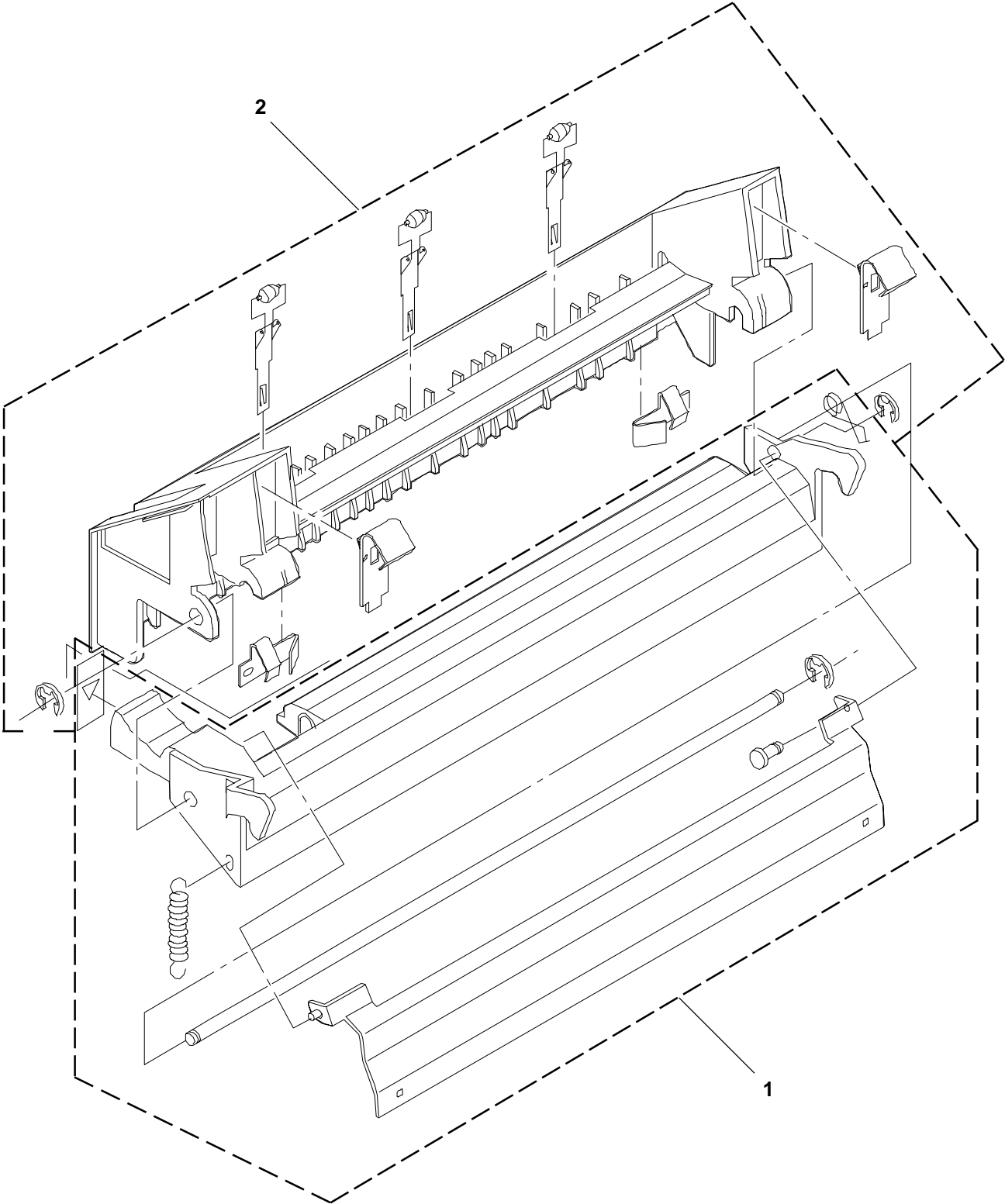
# GRUPPO TRASPORTO (1/2) TRANSPORT UNIT (1/2)

PGL 12

REF.	CODE	DESCRIZIONE	DESCRIPTION
1	576475 X	GUIDA CARTA C	PAPER GUIDE C
2	576476 Y	COLLARE GUIDA RULLINO	GUIDE ROLLER COLLAR
3	576484 R	CORONA TRASFERIMENTO	TRANSFER CORONA
4	576477 Z	FILO CORONA TRASFERIMENTO	TRANSFER CORONA WIRE
5	576483 Q	VENTILATORE RAFFREDDAMENTO ANTER.	FRONT COOLING FAN
6	576478 A	GRUPPO STRUTTURA TRASPORTO	TRANSPORT FRAME ASSEMBLY
7	576479 B	CINGHIA COMANDO DUPLEX	DUPLEX DRIVE BELT
8	576480 Z	MOTORE TRASPORTO DUPLEX	DUPLEX TRANSPORT MOTOR
9	576481 N	PULEGGIA Z=28	PULLEY T=28
10	576482 P	INTERRUTTORE COPERTURA	COVER SWITCH



REF.	CODE	DESCRIZIONE	DESCRIPTION
1	576473 V	COPERTURA FUSORE	FUSER COVER
2	576474 W	GUIDA USCITA	EXIT GUIDE



# **INDICE GENERALE DEI CODICI**

## **GENERAL CODEX INDEX**

# **INDICE GENERALE DEI CODICI** **GENERAL CODES INDEX**

**PGL 12**

CODICE CODE	PAGINA PAGE	CODICE CODE	PAGINA PAGE	CODICE CODE	PAGINA PAGE
576429Z	2	576488V	10		
576430W	2	576489W	10		
576431K	2	576490T	9		
576432L	2				
576433M	2				
576434N	2				
576435P	3				
576436Q	3				
576437R	3				
576438S	3				
576439T	3				
576440G	3				
576441V	3				
576442W	3				
576443X	3				
576444Y	3				
576445Z	3				
576446S	4				
576447T	4				
576448C	4				
576449D	4				
576450A	4				
576451X	4				
576452Y	4				
576453Z	4				
576454S	4				
576455T	4				
576456U	5				
576457V	5				
576458E	6				
576459F	6				
576460C	6				
576461Z	6				
576462S	7				
576463T	7				
576464U	7				
576465V	7				
576466W	7				
576467X	8				
576468G	8				
576469H	8				
576470E	8				
576471T	8				
576472U	8				
576473V	12				
576474W	12				
576475X	11				
576476Y	11				
576477Z	11				
576478A	11				
576479B	11				
576480Z	11				
576481N	11				
576482P	11				
576483Q	11				
576484R	11				
576485J	10				
576486K	10				
576487L	10				

## STATO DI AGGIORNAMENTO UPDATING STATUS

[illegible]

