

**Stampante - Printer**

# **Artjet 10**

**CATALOGO PARTI DI RICAMBIO  
SPARE PARTS CATALOGUE**

Code 686570H-00

---

**IMPORTANTE**

PUBBLICAZIONE REDATTA DA OLIVETTI LEXIKON (GESTIONE RICAMBI E SCORTE).  
QUESTO CATALOGO È L' UNICO DOCUMENTO AL QUALE FARE RIFERIMENTO PER  
ORDINARE LE PARTI DI RICAMBIO.

**IMPORTANT**

THIS PUBLICATION IS WRITTEN BY OLIVETTI LEXIKON (SPARE PARTS DEPARTMENT).  
THIS CATALOGUE IS THE ONLY DOCUMENT TO WHICH REFERENCE MAY BE MADE  
FOR ORDERING SPARE PARTS.

---

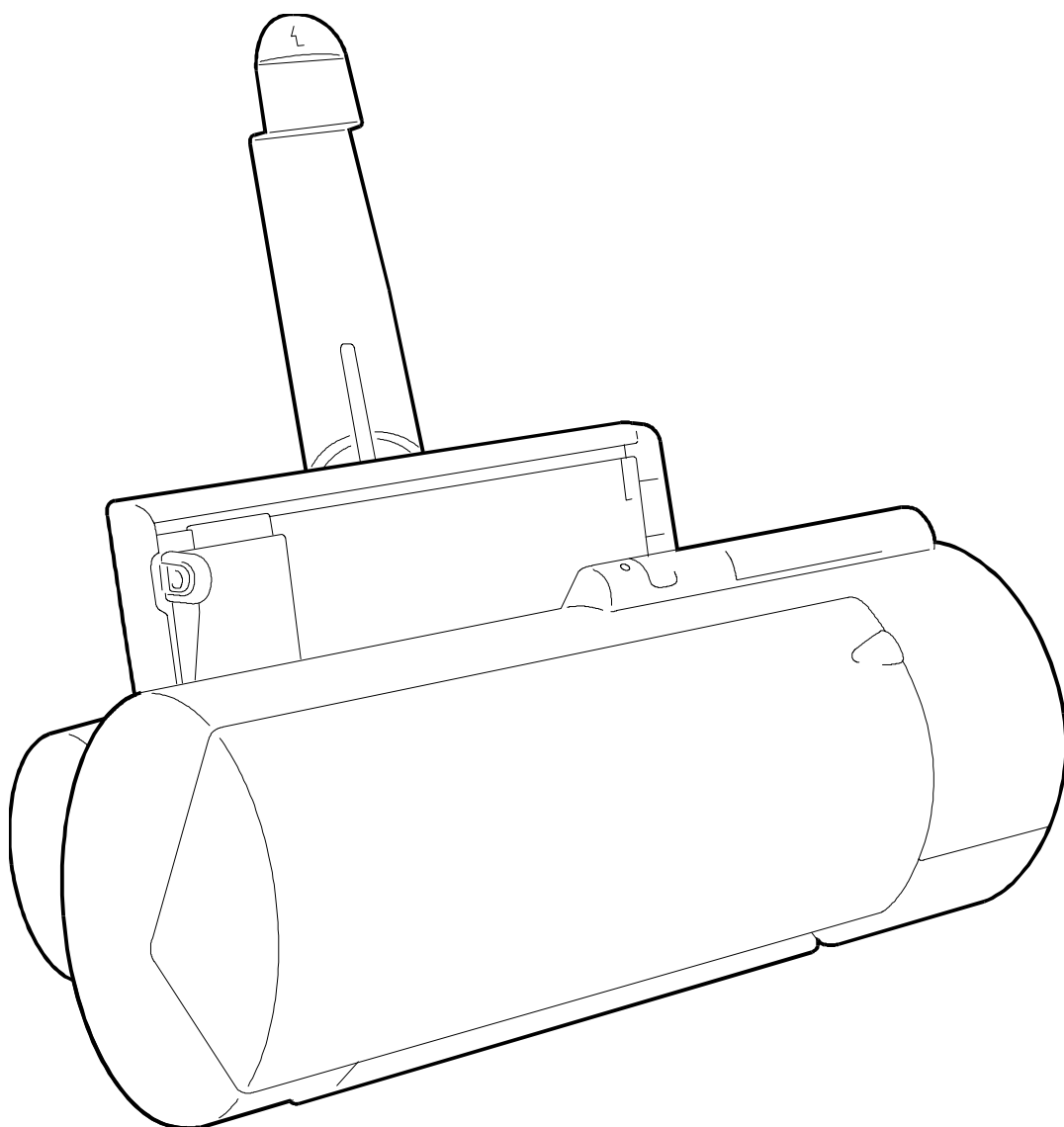
**PUBBLICAZIONE EMESSA DA:**  
**PUBLICATION ISSUED BY:**

**Olivetti Lexikon, S.p.A.**  
Documentazione  
77, Via Jervis - 10015 Ivrea (Italy)

*Copyright © 1999, by Olivetti*  
*All rights reserved*

*Printed in Italy by:*

# Artjet 10



**INDICE**

GRUPPO CARROZZERIA 1 .....	Pag.	3
GRUPPO CARROZZERIA 2 .....	"	4
GRUPPO STAZIONE DI SERVIZIO .....	"	5
GRUPPO MOTORI E PIASTRA .....	"	6
GRUPPO STAMPA 1 .....	"	7
GRUPPO STAMPA 2 .....	"	8
GRUPPO STAMPA 3 .....	"	9
GRUPPO TRASCINAMENTO CARTA .....	"	10
GRUPPO ASF .....	"	11
GRUPPO PICCHI .....	"	12
<b>INDICE GENERALE DEI CODICI .....</b>	<b>"</b>	<b>13</b>

**INDEX**

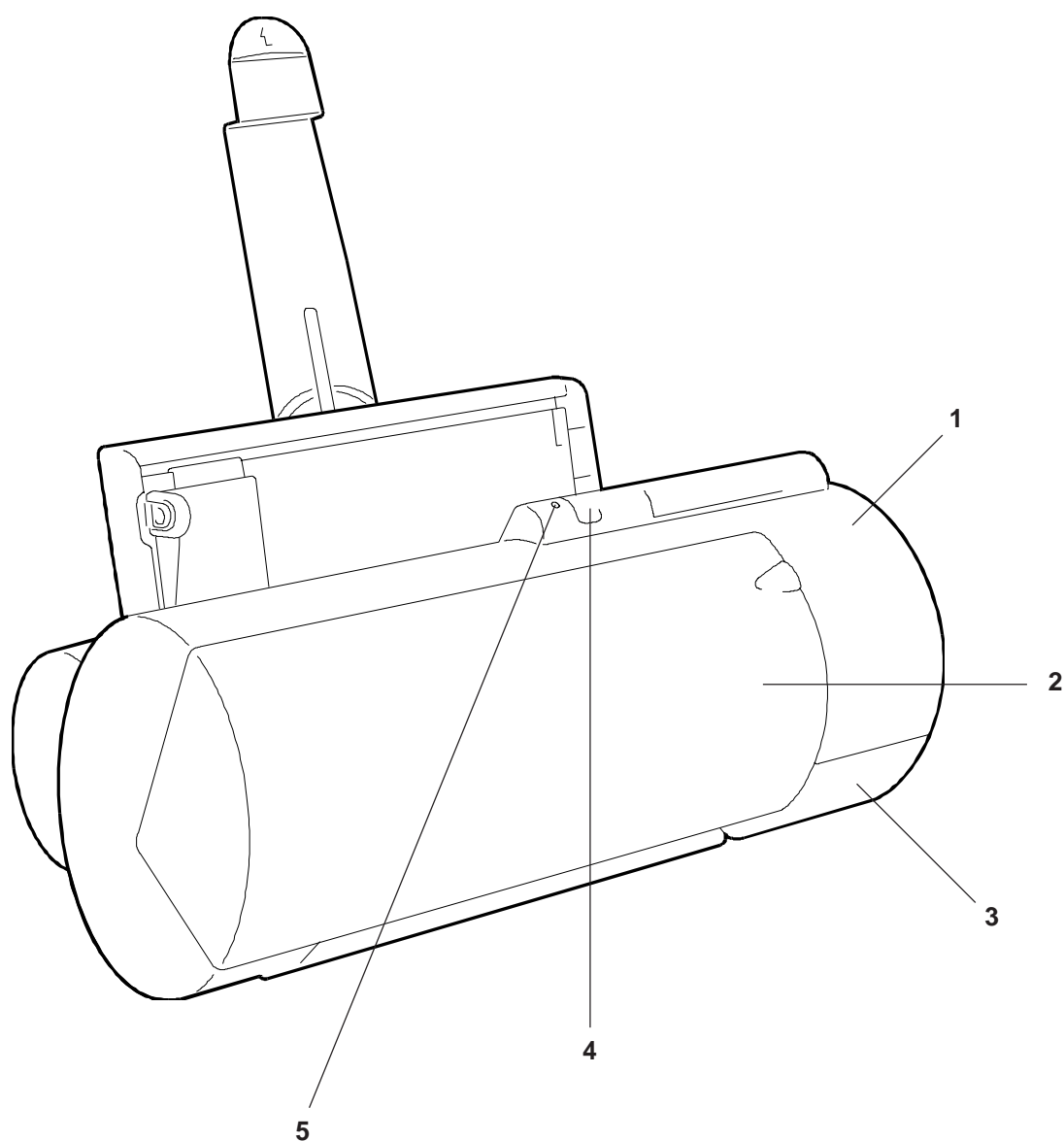
CASING ASSEMBLY 1 .....	Pag.	3
CASING ASSEMBLY 2 .....	"	4
SERVICE STATION .....	"	5
MOTORS AND BOARD ASSEMBLY .....	"	6
PRINT ASSEMBLY 1 .....	"	7
PRINT ASSEMBLY 2 .....	"	8
PRINT ASSEMBLY 3 .....	"	9
PAPER FEED ASSEMBLY .....	"	10
ASF ASSEMBLY .....	"	11
TOOTHED ASSEMBLY .....	"	12
<b>GENERAL CODES INDEX .....</b>	<b>"</b>	<b>13</b>

# GRUPPO CARROZZERIA 1

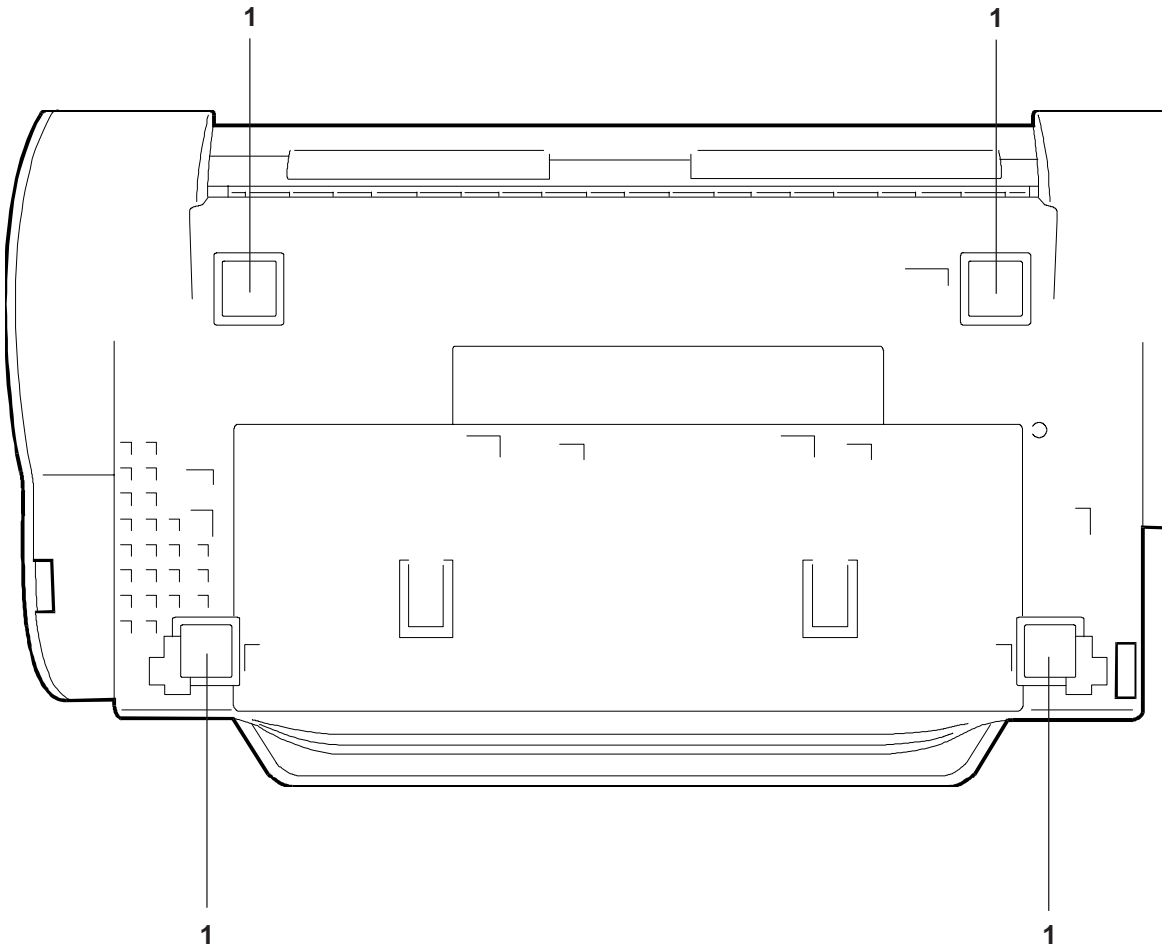
## CASING ASSEMBLY 1

Artjet 10

REF.	CODE	DESCRIZIONE	DESCRIPTION
1	204352 P	SCocca	CASING
2	204353 Q	COPERCHIO	COVER
3	204342 M	FONDELLO	BASE
4	204358 V	TASTO	KEY
5	204359 W	DIFFUSORE LED	LED DIFFUSER



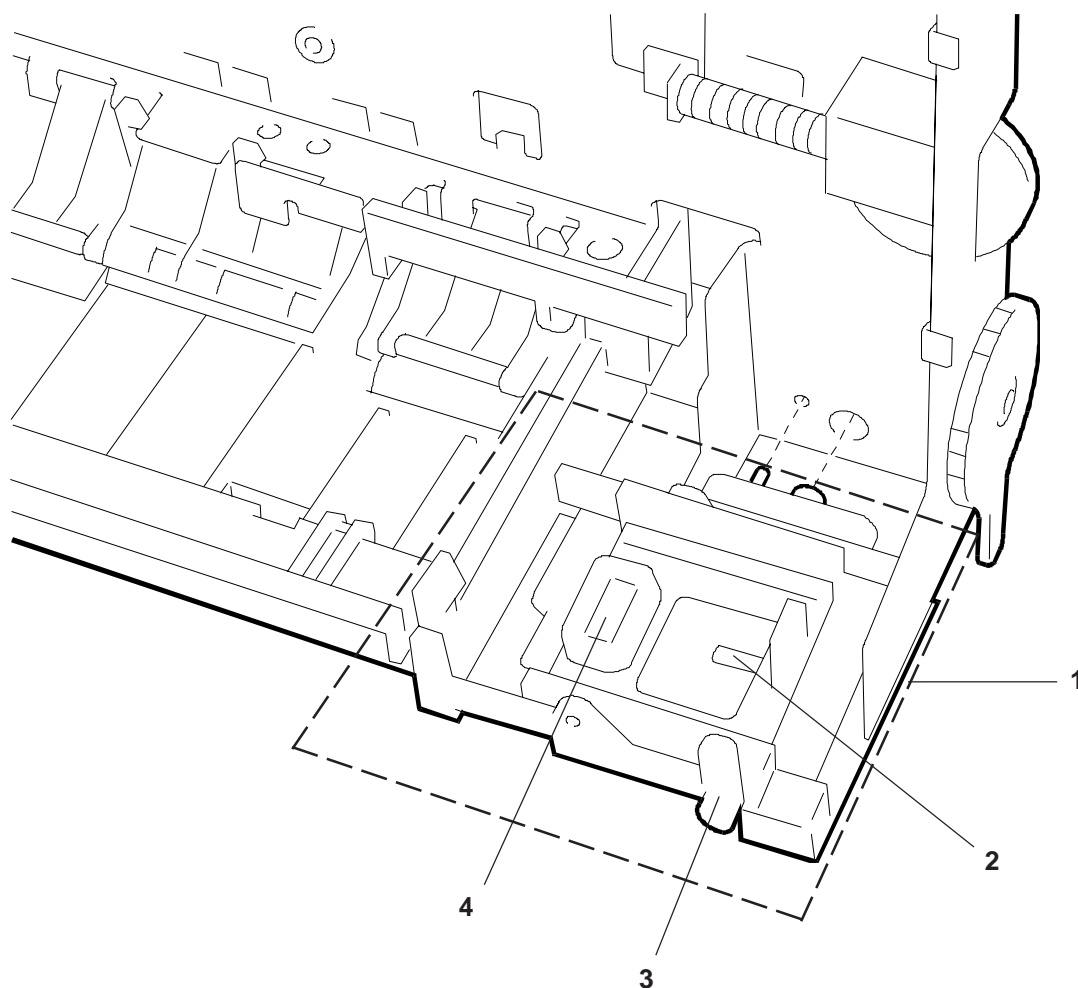
REF.	CODE	DESCRIZIONE	DESCRIPTION
1	203133 T	PIEDINO	FOOT



## GR. STAZIONE DI SERVIZIO SERVICE STATION

Artjet 10

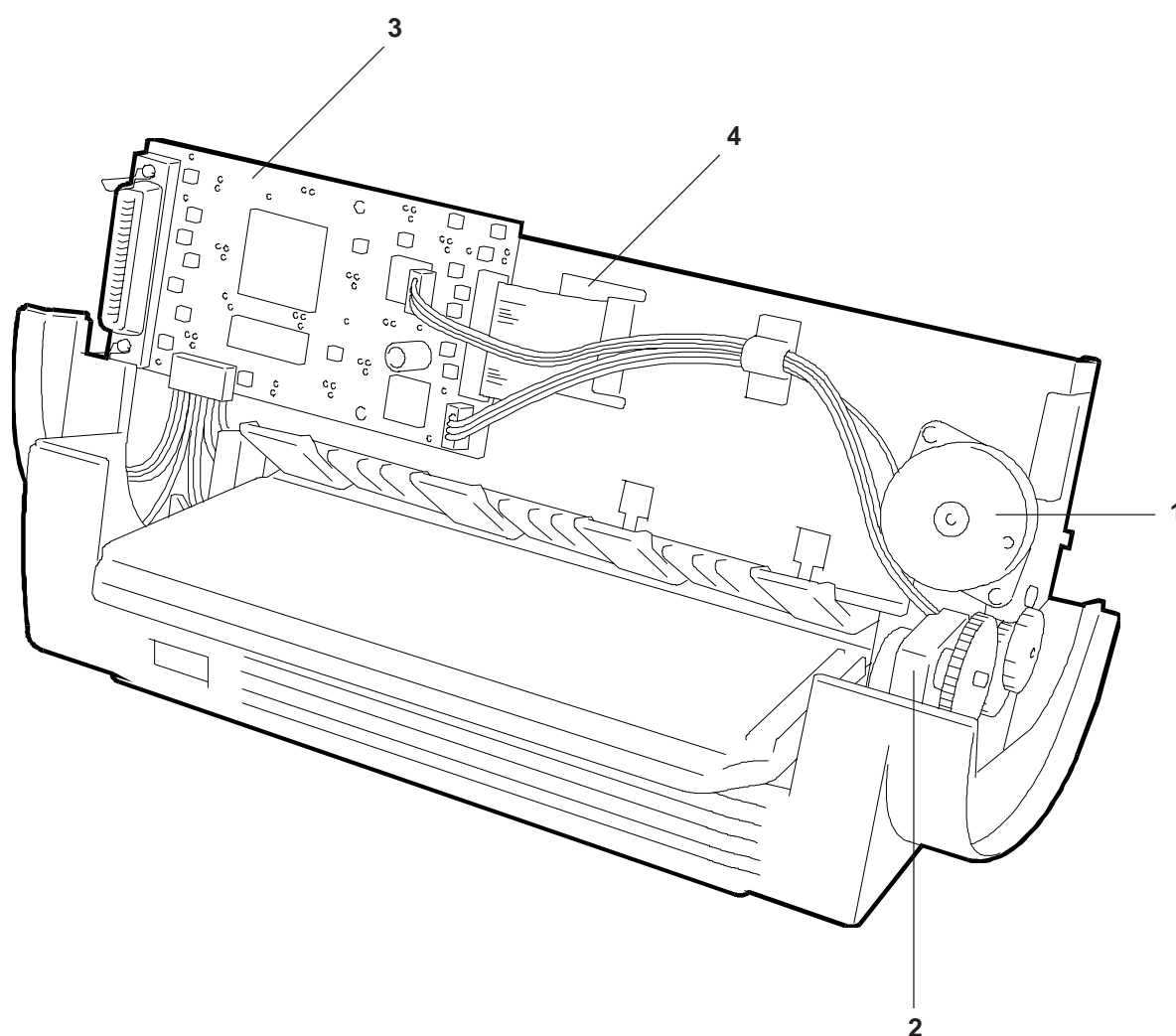
REF.	CODE	DESCRIZIONE	DESCRIPTION
1	204305 R	STAZIONE DI SERVIZIO COMPLETA	SERVICE STATION GROUP
2	204310 R	MOLLA PULITORE	CLEANER SPRING
3	204309 V	MOLLA SUPPORTO	SUPPORT SPRING
4	204311 E	PULITORE TESTINA	HEAD CLEANER



## GR. MOTORI E PIASTRA MOTORS AND BOARD ASSEMBLY

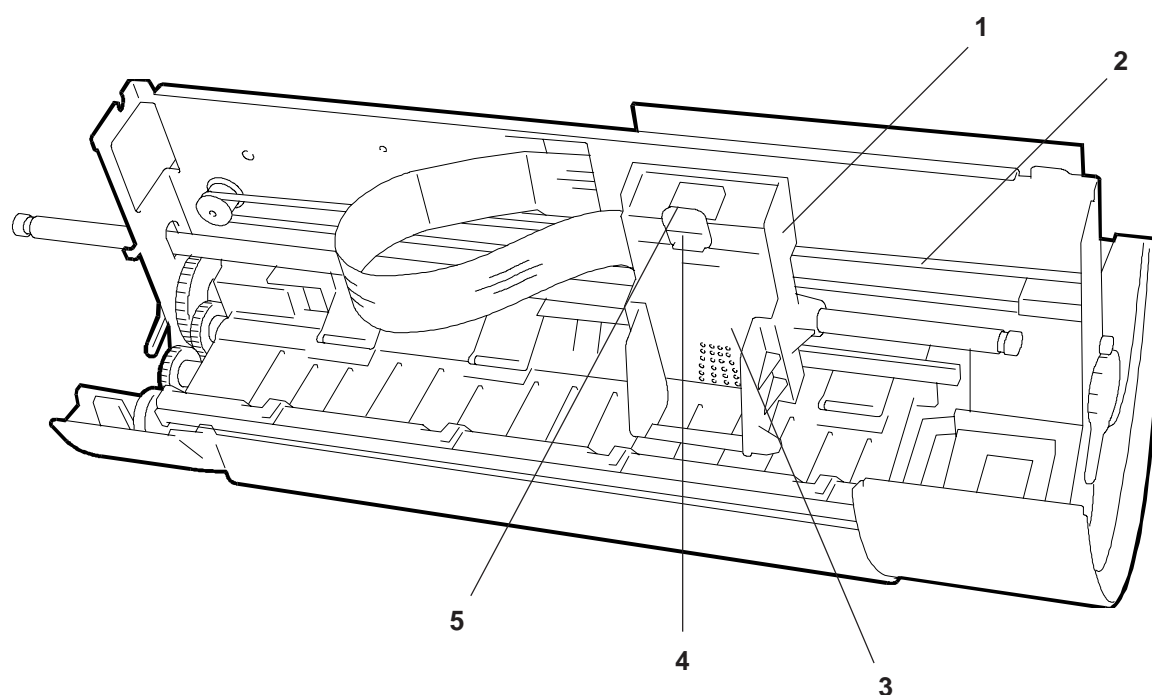
Artjet 10

REF.	CODE	DESCRIZIONE	DESCRIPTION
1	204293 D	MOTORE CARRELLO	CARRIAGE MOTOR
2	204250 V	MOTORE INTERLINEA	LINE FEED MOTOR
3	129063 V	PIASTRA BASE XP32	XP32 MAIN BOARD
4	204318 M	SUPPORTO FLAT	FLAT SUPPORT

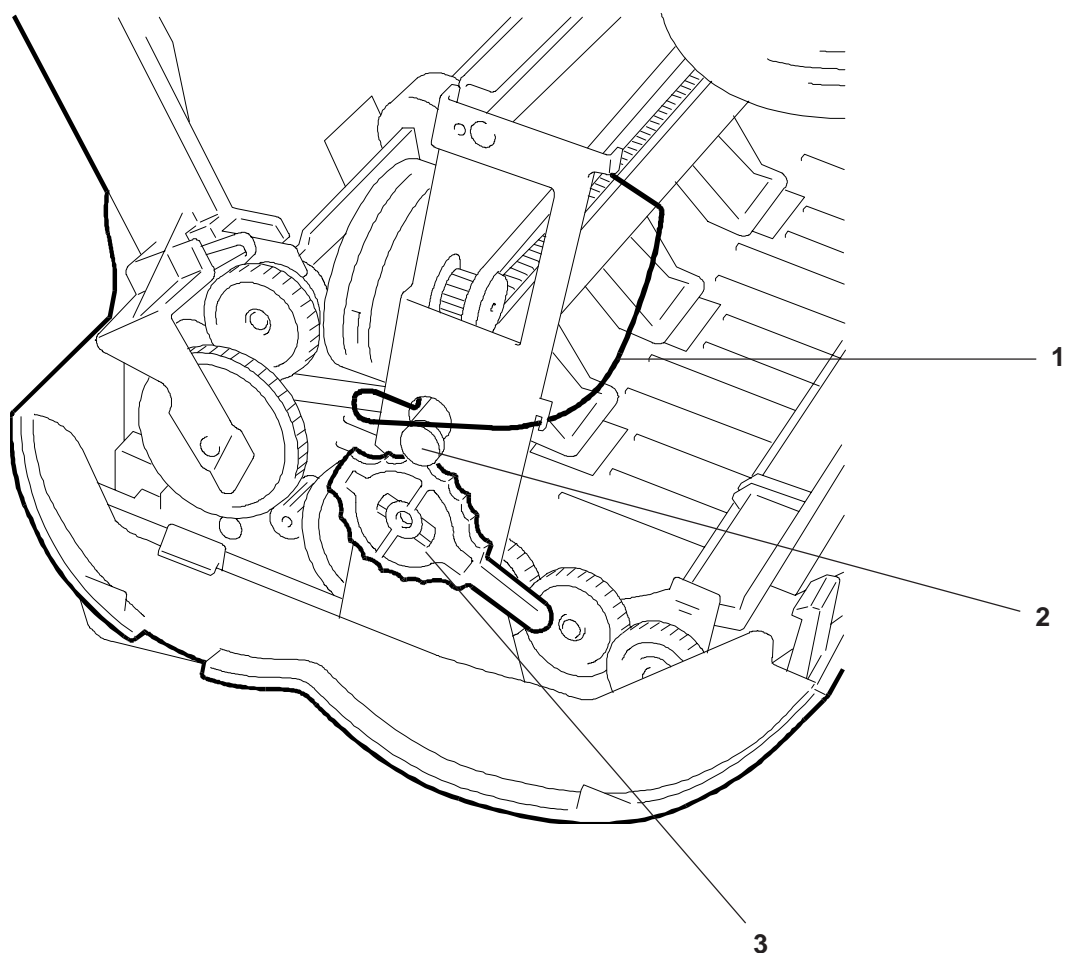




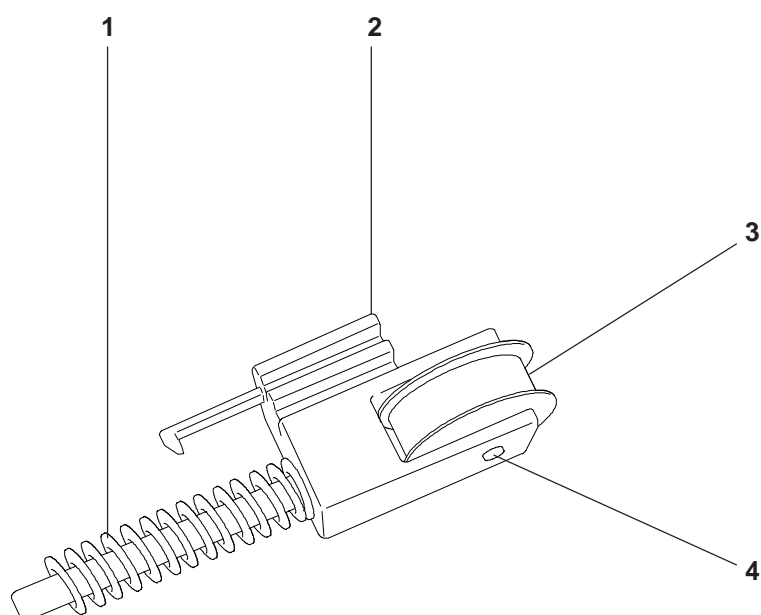
REF.	CODE	DESCRIZIONE	DESCRIPTION
1	204272 P	CARRELLO	CARRIAGE
2	204273 Q	CINGHIA DENTATA	BELT TIMING
3	204277 L	GR. ELETTRONICO CARRELLO	CARRIAGE ELECTRONICS ASSY
4	204279 W	LEVA BLOCCAGGIO TESTINA	HEAD BLOCKING LEVER
5	204280 L	MOLLA BLOCCAGGIO TESTINA	HEAD BLOCKING SPRING



REF.	CODE	DESCRIZIONE	DESCRIPTION
1	204297 H	MOLLA	SPRING
2	204296 G	ALBERO CARRELLO	CARRIAGE SHAFT
3	204314 H	SUPPORTO ALBERO CARRELLO	CARRIAGE SHAFT SUPPORT



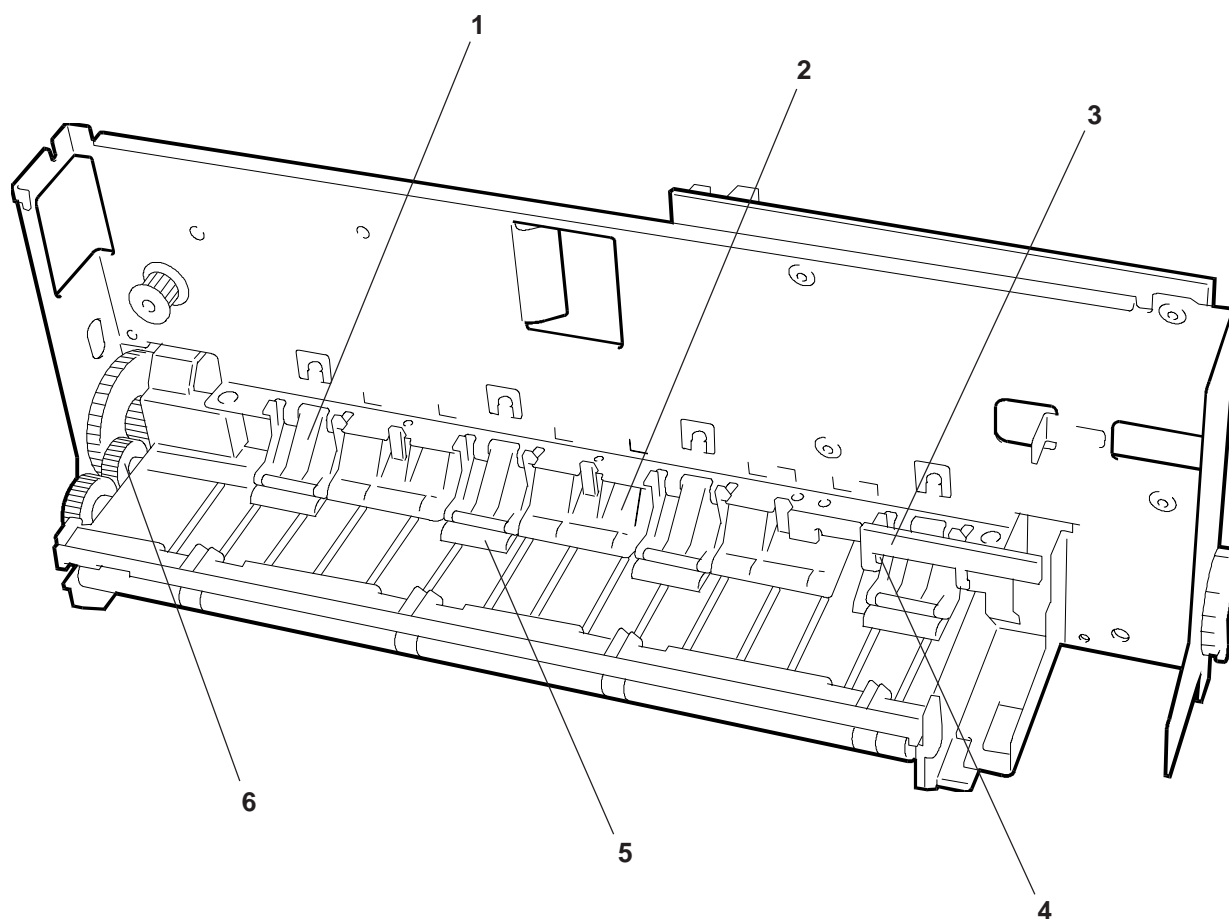
REF.	CODE	DESCRIZIONE	DESCRIPTION
1	204265 Q	MOLLA TENDICINGHIA	BELT TENSION SPRING
2	203375 M	FORCHETTA TENDICINGHIA	BELT TENSION FORK
3	203374 L	PULEGGIA	PULLEY
4	204266 R	ALBERINO	SHAFT



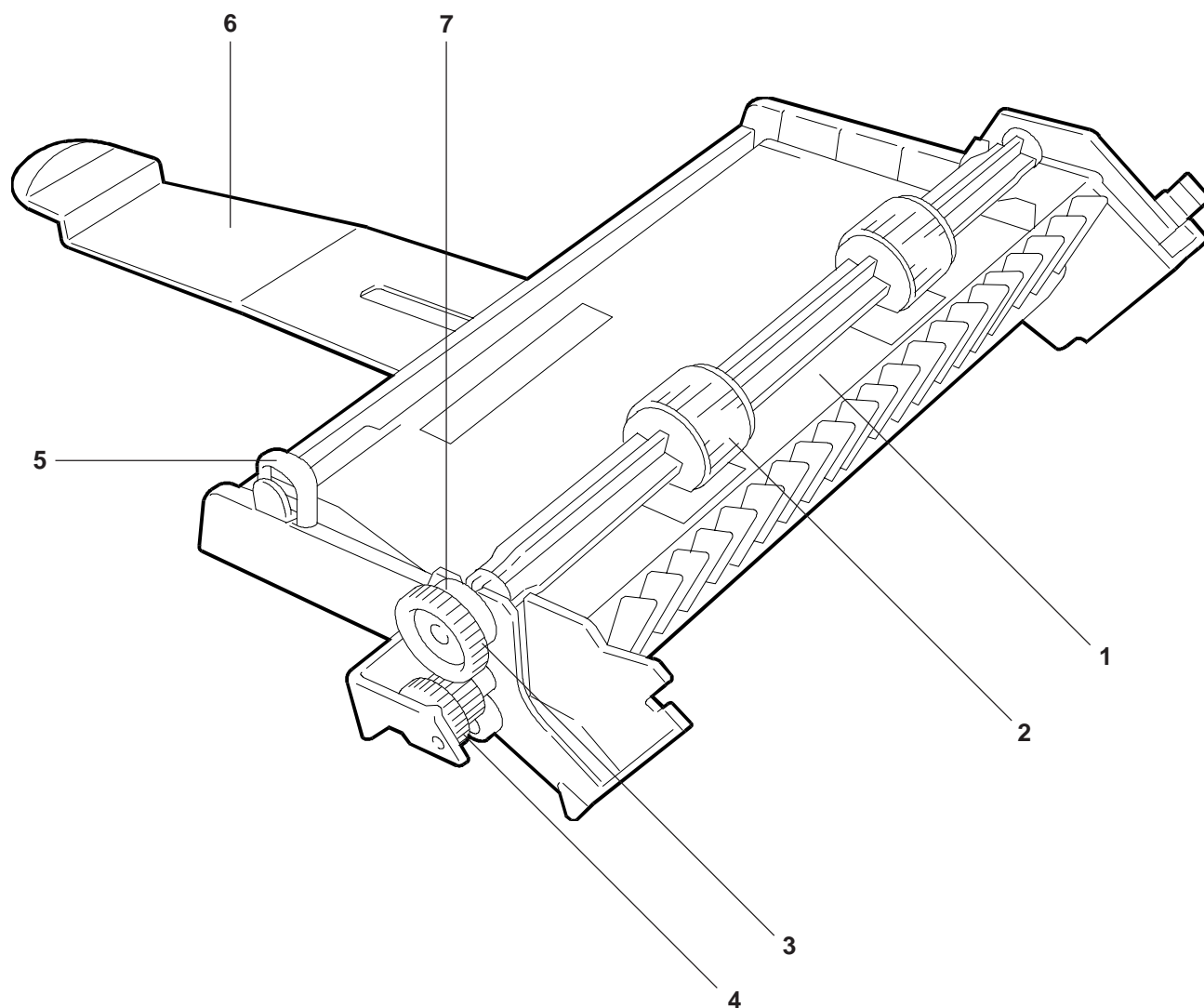
## GRUPPO TRASCINAMENTO CARTA PAPER FEED ASSEMBLY

Artjet 10

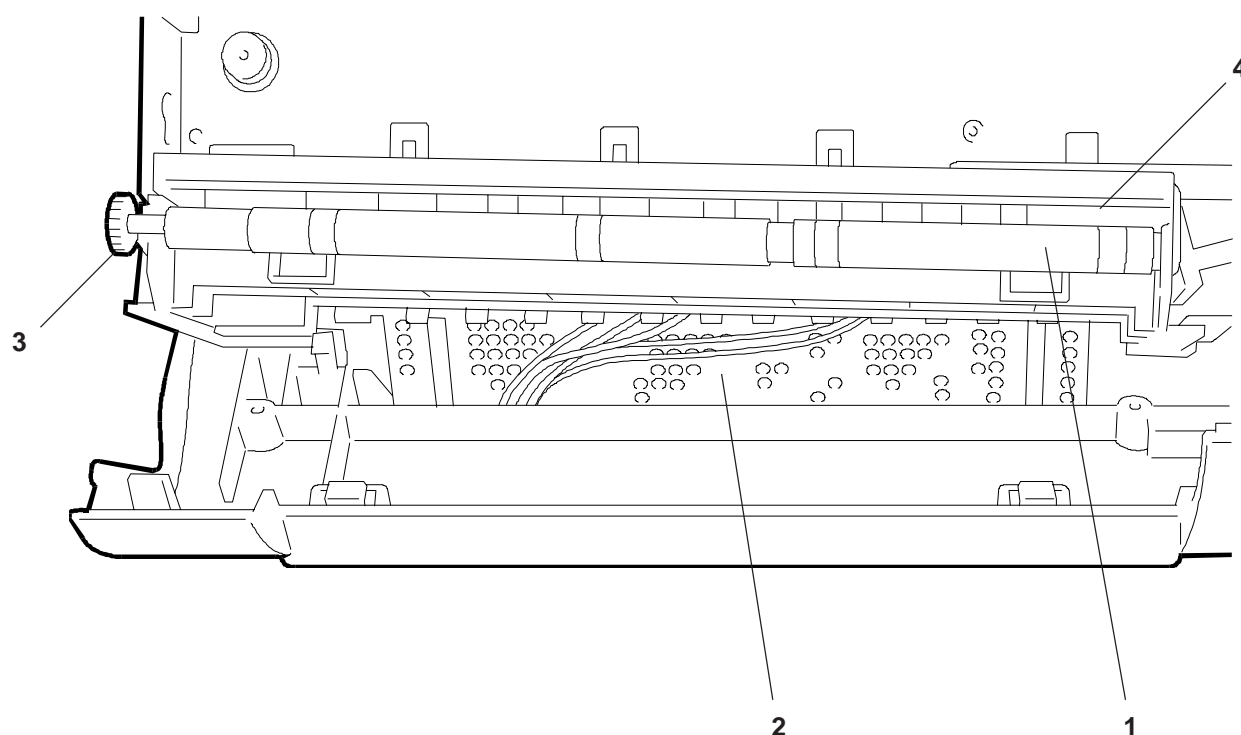
REF.	CODE	DESCRIZIONE	DESCRIPTION
1	204298 J	GR. PREMICA	PAPER PRESSURE ASSY
2	204302 N	GUIDA CARTA	PAPER GUIDE
3	204320 K	LEVA RIFLESSIONE	REFLECTIVE LEVER
4	204322 H	MOLLA PER LEVA RIFLESSIONE	SPRING FOR REFLECTIVE LEVER
5	204256 P	ALBERO RULLINI	ROLLER SHAFT
6	204259 S	RUOTA PRINCIPALE	MAIN WHEEL



REF.	CODE	DESCRIZIONE	DESCRIPTION
1	204371 J	ASF XP32	XP32 ASF
2	203507 B	GOMMINO ASF	ASF RUBBER
3	204385 H	INGRANAGGIO ALBERO ASF	ASF SHAFT GEAR
4	204386 A	RUOTA INTERMEDIA	INTERMEDIATE GEAR
5	204380 Q	GUIDA CARTA	PAPER GUIDE
6	204381 D	SUPPORTO CARTA	PAPER SUPPORT
7	204388 L	LEVA SELEZIONE	SELECTOR LEVER



REF.	CODE	DESCRIZIONE	DESCRIPTION
1	204331 A	GR. RULLINI ESPULSORI	EJECTOR ROLLERS ASSEMBLY
2	204418 A	PIASTRA ALI XP32	ALI XP32 BOARD
3	204334 D	RUOTA DENTATA	TOOTH WHEEL
4	581352 Z	GR. RUOTA A PICCHI	TOOTHED WHEEL ASSEMBLY



# **INDICE GENERALE DEI CODICI GENERAL CODEX INDEX**

# **INDICE GENERALE DEI CODICI** **GENERAL CODES INDEX**

**Artjet 10**

CODICE CODE	PAGINA PAGE	CODICE CODE	PAGINA PAGE	CODICE CODE	PAGINA PAGE
129063V	6				
203133T	4				
203374L	9				
203375M	9				
203507B	11				
204250V	6				
204256P	10				
204259S	10				
204265Q	9				
204266R	9				
204272P	7				
204273Q	7				
204277L	7				
204279W	7				
204280L	7				
204293D	6				
204296G	8				
204297H	8				
204298J	10				
204302N	10				
204305R	5				
204309V	5				
204310R	5				
204311E	5				
204314H	8				
204318M	6				
204320K	10				
204322H	10				
204331A	12				
204334D	12				
204342M	3				
204352P	3				
204353Q	3				
204358V	3				
204359W	3				
204371J	11				
204380Q	11				
204381D	11				
204385H	11				
204386A	11				
204388L	11				
204418A	12				
581352Z	12				



## STATO DI AGGIORNAMENTO UPDATING STATUS

[illegible]

