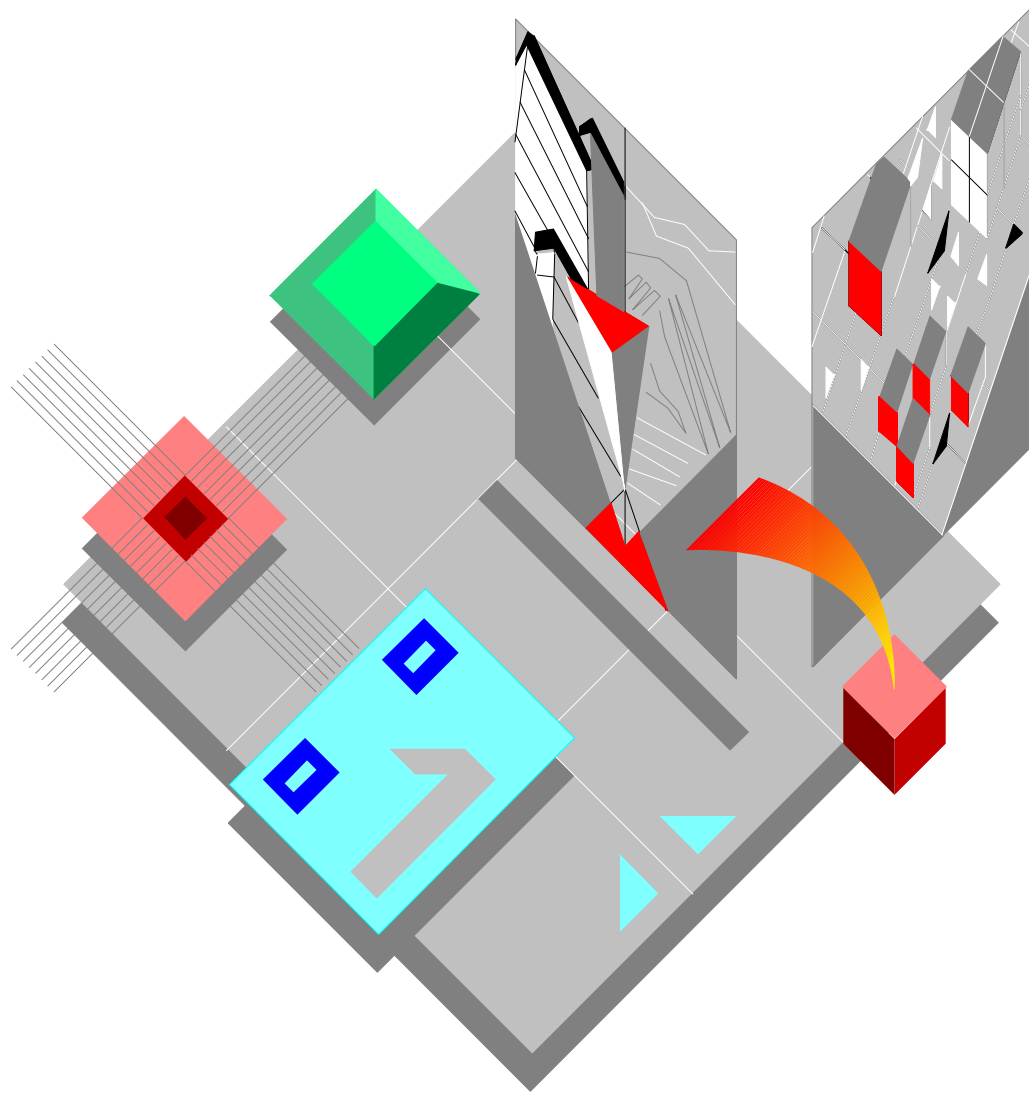


Field Engineering Library



JP 470

**CATALOGO PARTI DI RICAMBIO
SPARE PARTS CATALOGUE**

Copyright © 1996 Olivetti Lexikon S.p.A.

olivetti

Stampante - Printer

JP 470

**CATALOGO PARTI DI RICAMBIO
SPARE PARTS CATALOGUE**

Code 2720930W-00

IMPORTANTE

PUBBLICAZIONE REDATTA DA OLIVETTI LEXIKON (GESTIONE RICAMBI E SCORTE).

QUESTO CATALOGO È L'UNICO DOCUMENTO AL QUALE FARE RIFERIMENTO PER ORDINARE LE PARTI DI RICAMBIO.

PER EVENTUALI INFORMAZIONI RIVOLGERSI AL NUMERO:

FAX: +39.125.524025

IMPORTANT

THIS PUBLICATION IS WRITTEN BY OLIVETTI LEXIKON (SPARE PARTS DEPARTMENT).

THIS CATALOGUE IS THE ONLY DOCUMENT TO WHICH REFERENCE MAY BE MADE FOR ORDERING SPARE PARTS.

REQUESTS FOR ADDITIONAL INFORMATION SHOULD BE FAXED TO THE FOLLOWING NUMBER:

FAX: +39.125.524025.

JP 470

INDICE

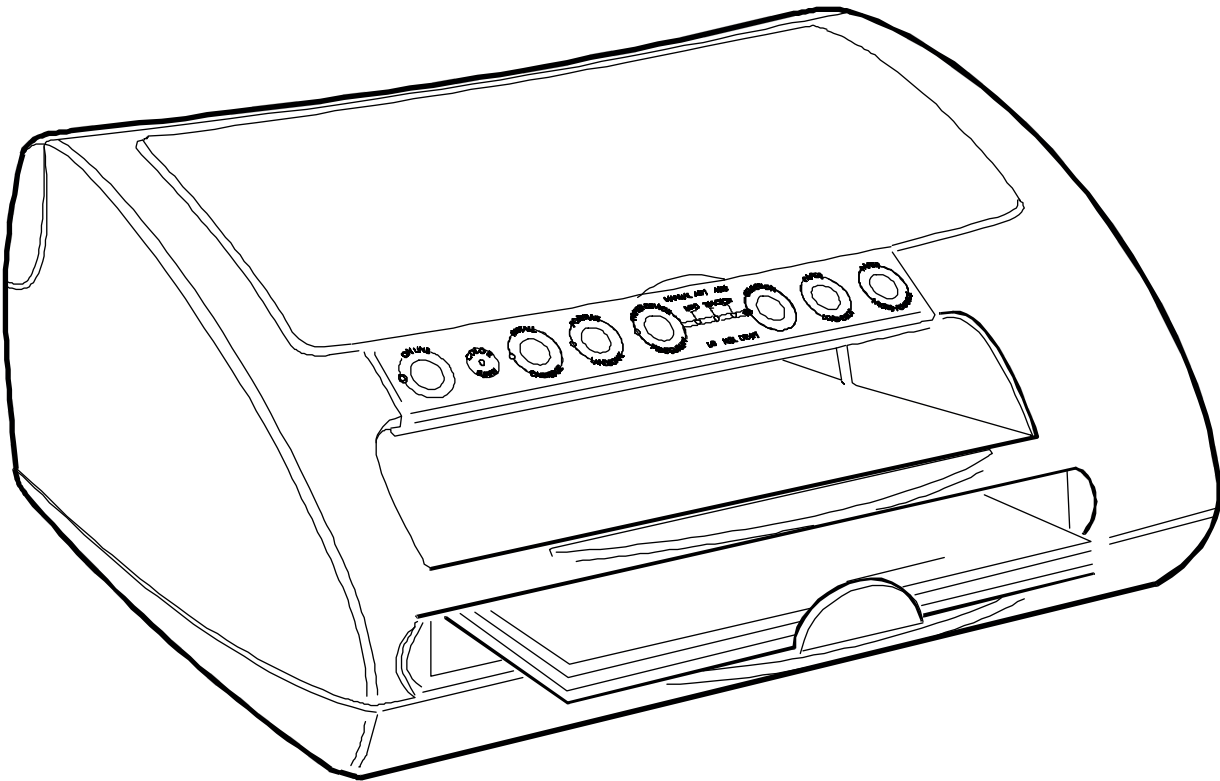
JP 470

COMPLESSIVO	PAG.	3
GRUPPO CARROZZERIA	"	4
GRUPPO CASSETTO	"	5
GRUPPO MECCANICA INFERIORE	"	6
VISTA LATERALE SINISTRA	"	7
MECCANISMI	"	8
GRUPPO MOTORE CARRELLO	"	9
GRUPPO STAZIONE PARK	"	10
GRUPPO STAMPA	"	11
PIASTRA BASE	"	12
GRUPPO ALIMENTATORE	"	13
INDICE GENERALE DEI CODICI	"	15

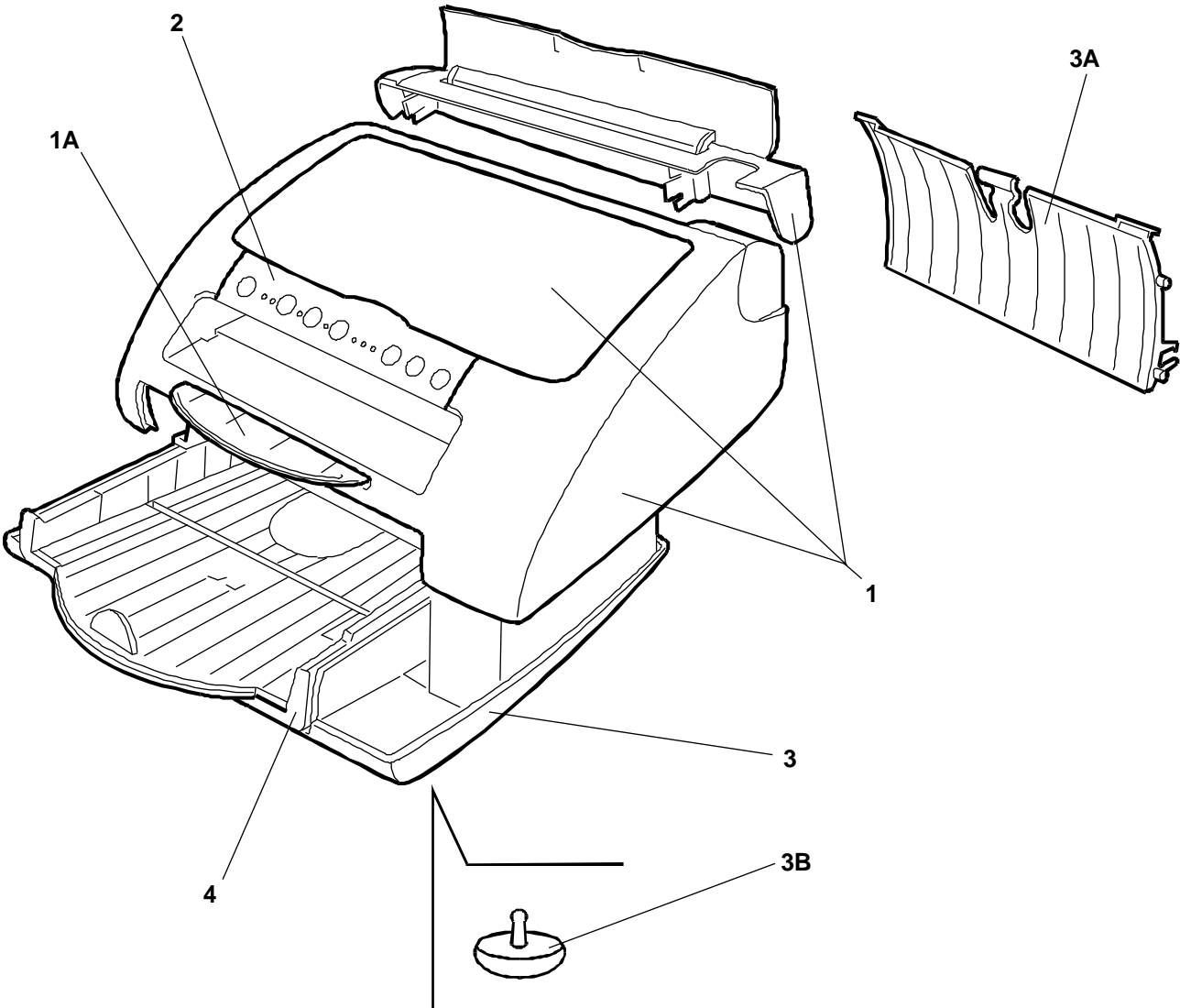
INDEX

JP 470

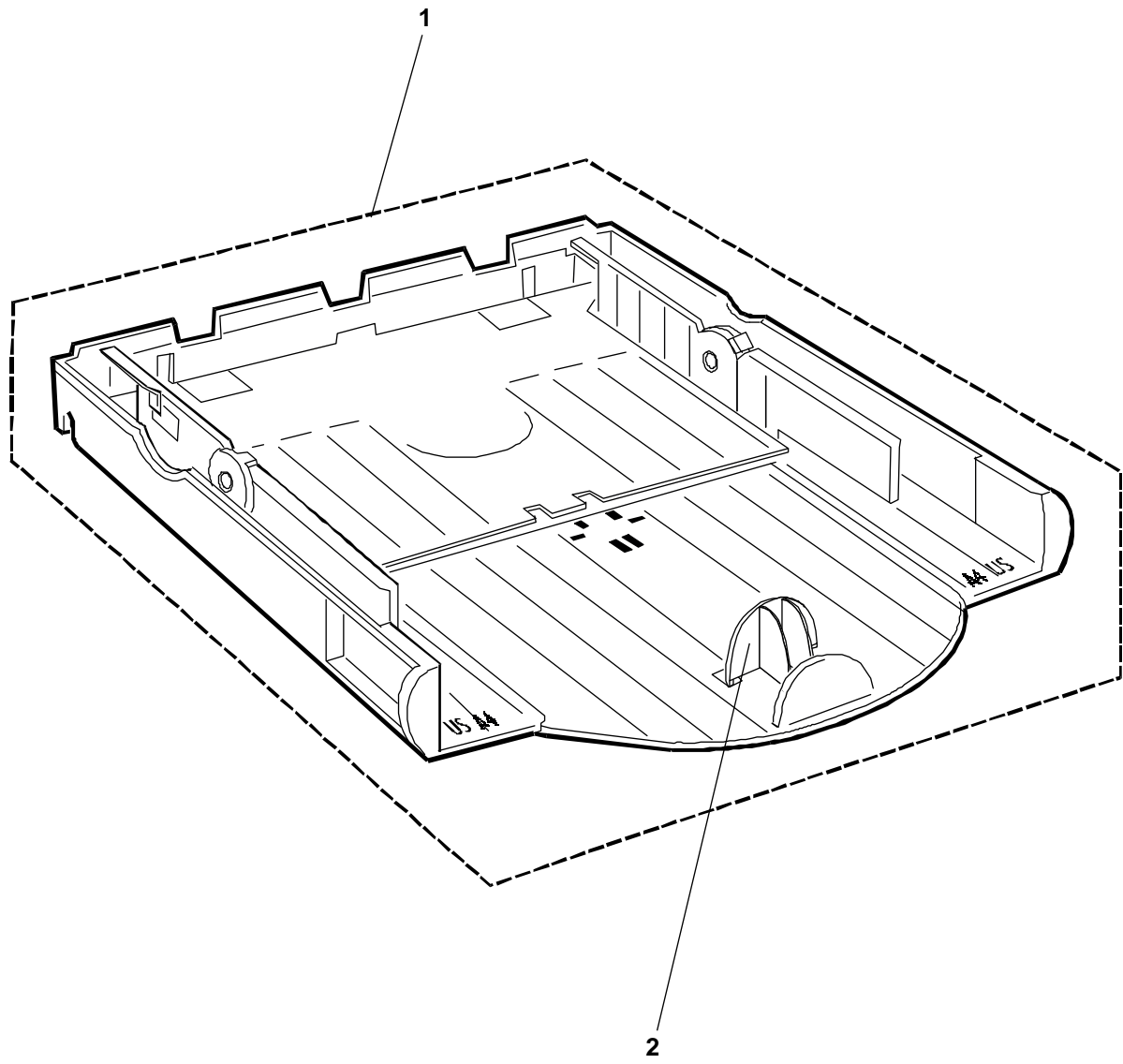
ASSEMBLY	PAGE	3
CASING ASSEMBLY	"	4
CASSETTE ASSEMBLY	"	5
LOWER MECHANICAL ASSEMBLY	"	6
LEFT SIDE VIEW	"	7
MECHANISM	"	8
CARRIAGE MOTOR ASSEMBLY	"	9
STATION PARK ASSEMBLY	"	10
PRINTER ASSEMBLY	"	11
MOTHER BOARD	"	12
POWER SUPPLY ASSEMBLY	"	13
GENERAL CODES INDEX	"	15



REF.	CODE	DESCRIZIONE	DESCRIPTION
1 1A	582593 D 581086 B	GRUPPO SCOCCA SUPPORTO CARTA	CASING ASSEMBLY PAPER SUPPORT
2	582571 N	GRUPPO CONSOLE	CONSOLE ASSEMBLY
3 3A 3B	582521 C 582402 N 581198 Q	GR. MECCANICA-FONDELLO GUIDA CARTA POSTERIORE PIEDINO IN GOMMA	MECHANICAL-BASE ASSY REAR PAPER GUIDE RUBBER FOOT
4	582743 S	GRUPPO CASSETTO CARTA COMPLETO	COMPLETE PAPER CASSETTE ASSEMBLY

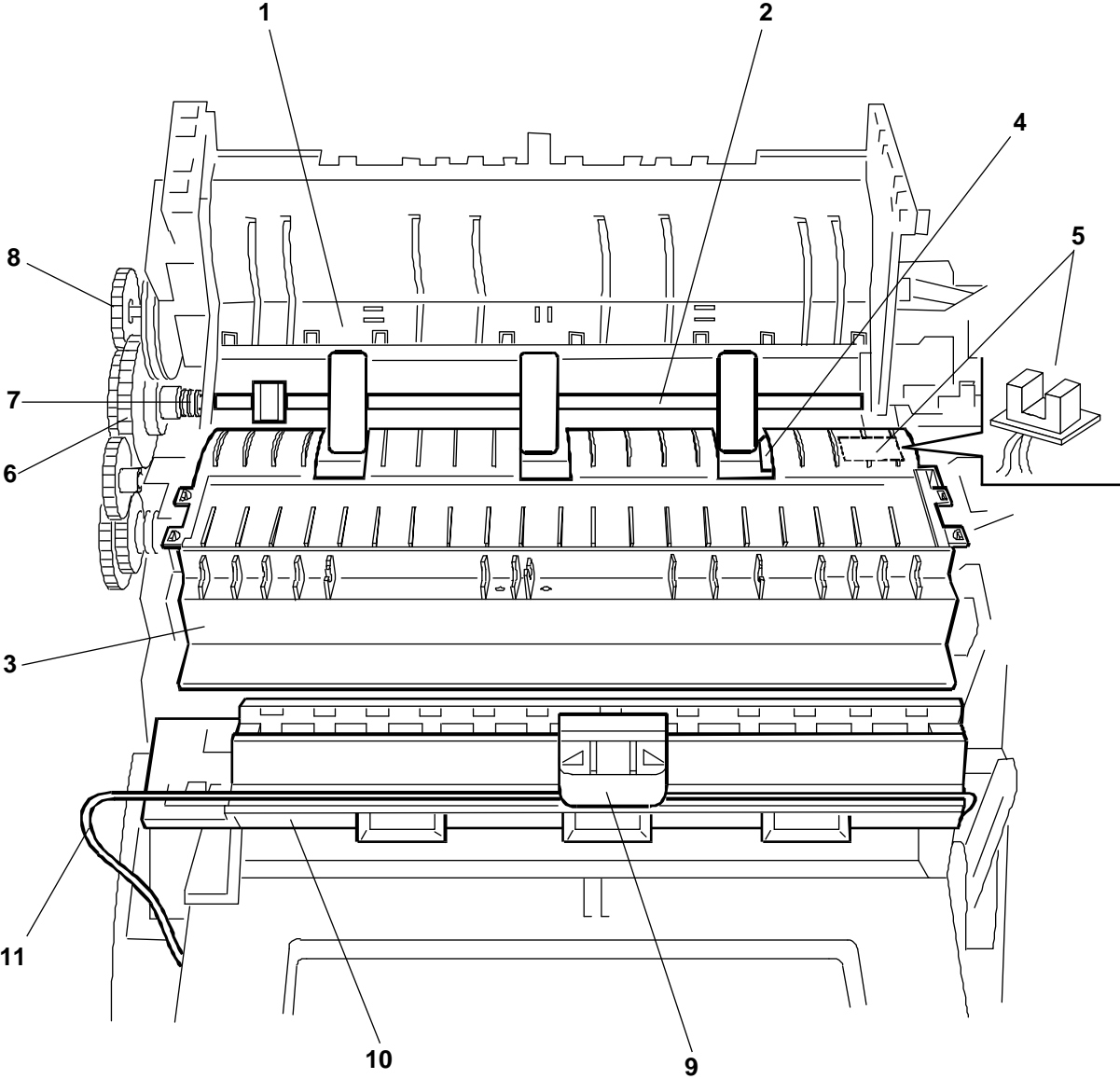


REF.	CODE	DESCRIZIONE	DESCRIPTION
1	582743 S	GR. CASSETTO COMPLETO	COMPLETE CASSETTE ASSY
2	581120 M	FERMO A5	BUTEE A5

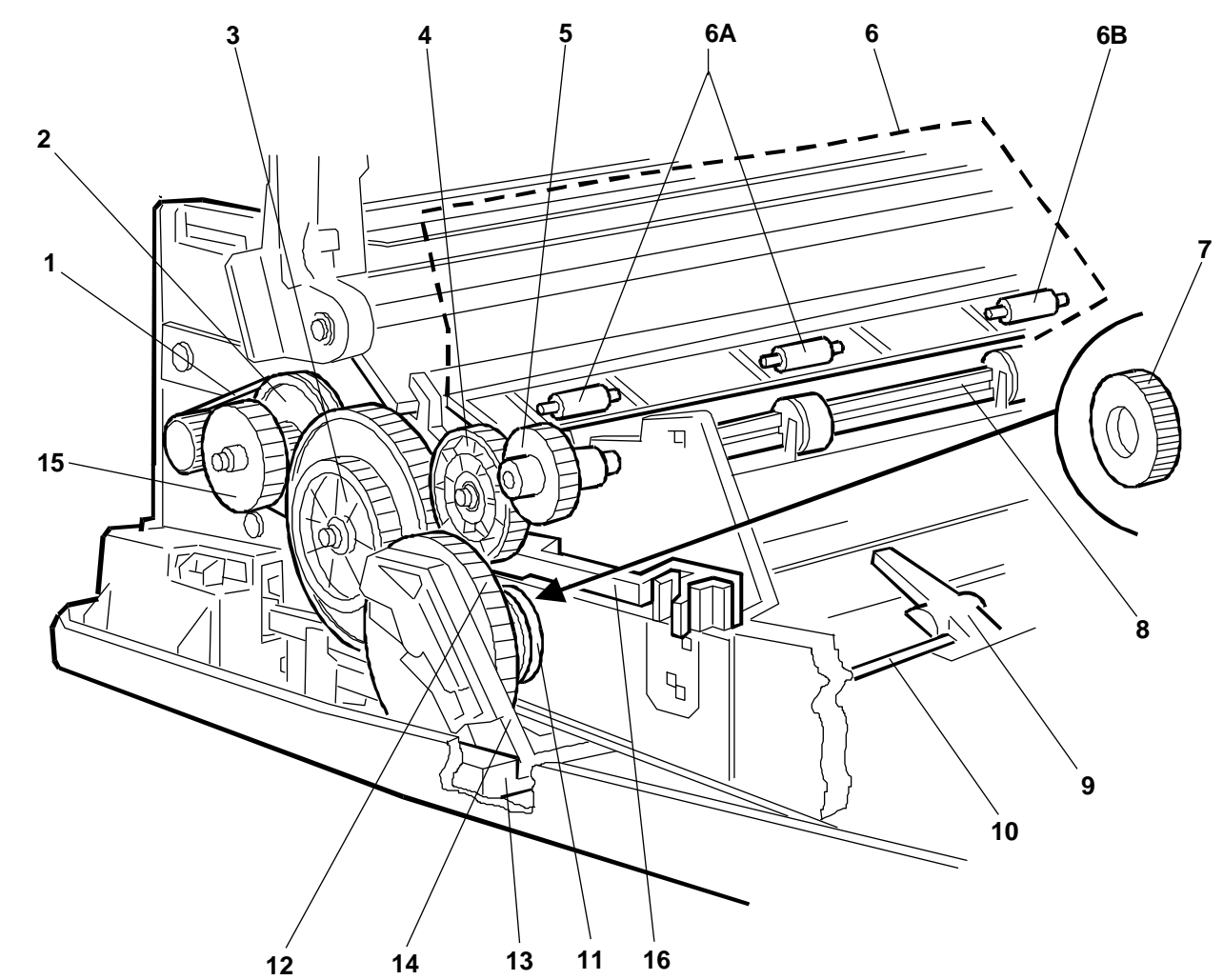


GRUPPO MECCANICA INFERIORE-LOWER MECHANICAL ASSEMBLY JP 470

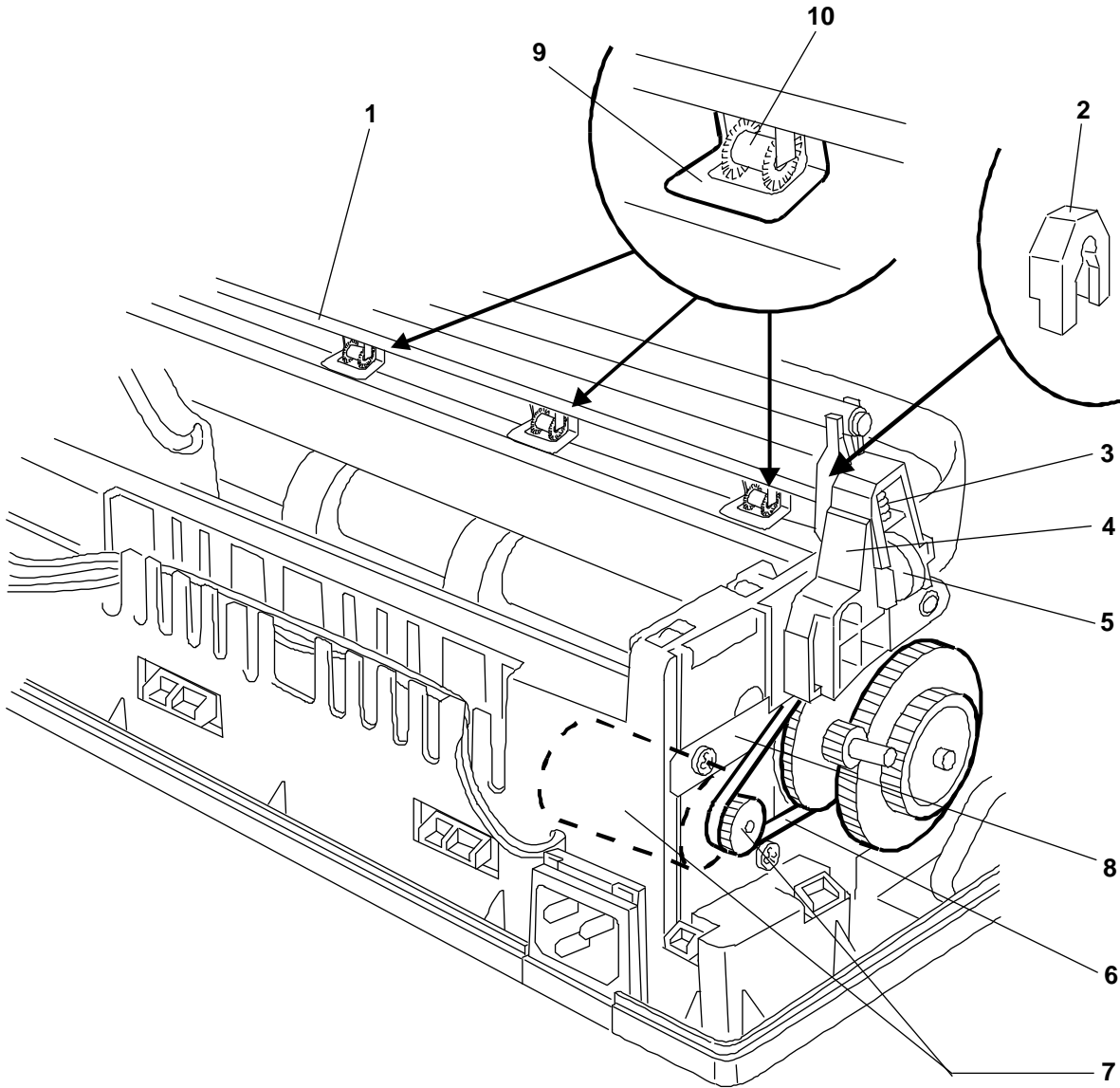
REF.	CODE	DESCRIZIONE	DESCRIPTION
1	581749 F	GUIDA CARTA INFERIORE	LOWER PAPER GUIDE ASSY
2	582380 T	GRUPPO ALBERO 3 RULLI	3 ROLLERS SHAFT ASSY
3	582137 B	SUPPORTO CARTA	PAPER SUPPORT
4	581029 R	LEVA PRESENZA CARTA	PAPER PRESENCE LEVER
5	582574 R	SENSORE CARTA	PAPER SENSOR
6	582382 R	RUOTA DENTATA	TOOTHED WHEEL
7	582383 J	MOLLA PER INNESTO	SPRING FOR CLUTCH
8	581039 K	RUOTA PER SPROKET	WHEEL FOR SPROKET
9	581045 R	CURSORE POMPA	SLIDER PUMP
10	582751 S	TRAVERSA POMPA	PUMP BAR
11	581047 K	TUBO POMPA	PUMP TUBE



REF.	CODE	DESCRIZIONE	DESCRIPTION
1	581043 P	CINGHIA TRASP. CARTA	APER TRANSPORT BELT
2	581022 A	PULEGGIA DENTATA	TOOTHED PULLEY
3	582382 R	RUOTA DENTATA	TOOTHED WHEEL
4	581023 B	RUOTA DENTATA	TOOTHED WHEEL
5	582133 F	RUOTA DENTATA	TOOTHED WHEEL
6	581288 S	GR. GUIDA CARTA SUPER. COMPLETO DI RULLINI	UPPER PAPER GUIDE ASSY WITH ROLLERS
6A	581040 Y	RULLINO PREMICARTA SUP.	UPPER PAPER PRESS.ROLLER
6B	581188 N	RULLINO SENSORE	SENSOR ROLLER
7	581096 D	RUOTA FRIZIONE	FRICITION WHEEL
8	581024 C	ALBERO USCITA CARTA	PAPER EXIT SHAFT
9	581102 Q	LEVA PIATTELLO	LEVER PLATE
10	581092 H	MOLLA DI TORSIONE	TORSION SPRING
11	581097 E	MOLLA PER RUOTA FRIZ.	SPRING FOR FRICTION WHEEL
12	581095 C	SETTORE DENTATO	TOOTHED SECTOR
13	581094 B	BLOCCAGGIO LEVA	LEVER BLOCKING
14	581093 A	LEVA	LEVER
15	581039 K	RUOTA DENTATA COLLEGAMENTO SPROKET	TOOTHED WHEEL CONNECT. SPROKET
16	582767 S	LEVA BLOCCAGGIO	BLOCKING LEVER

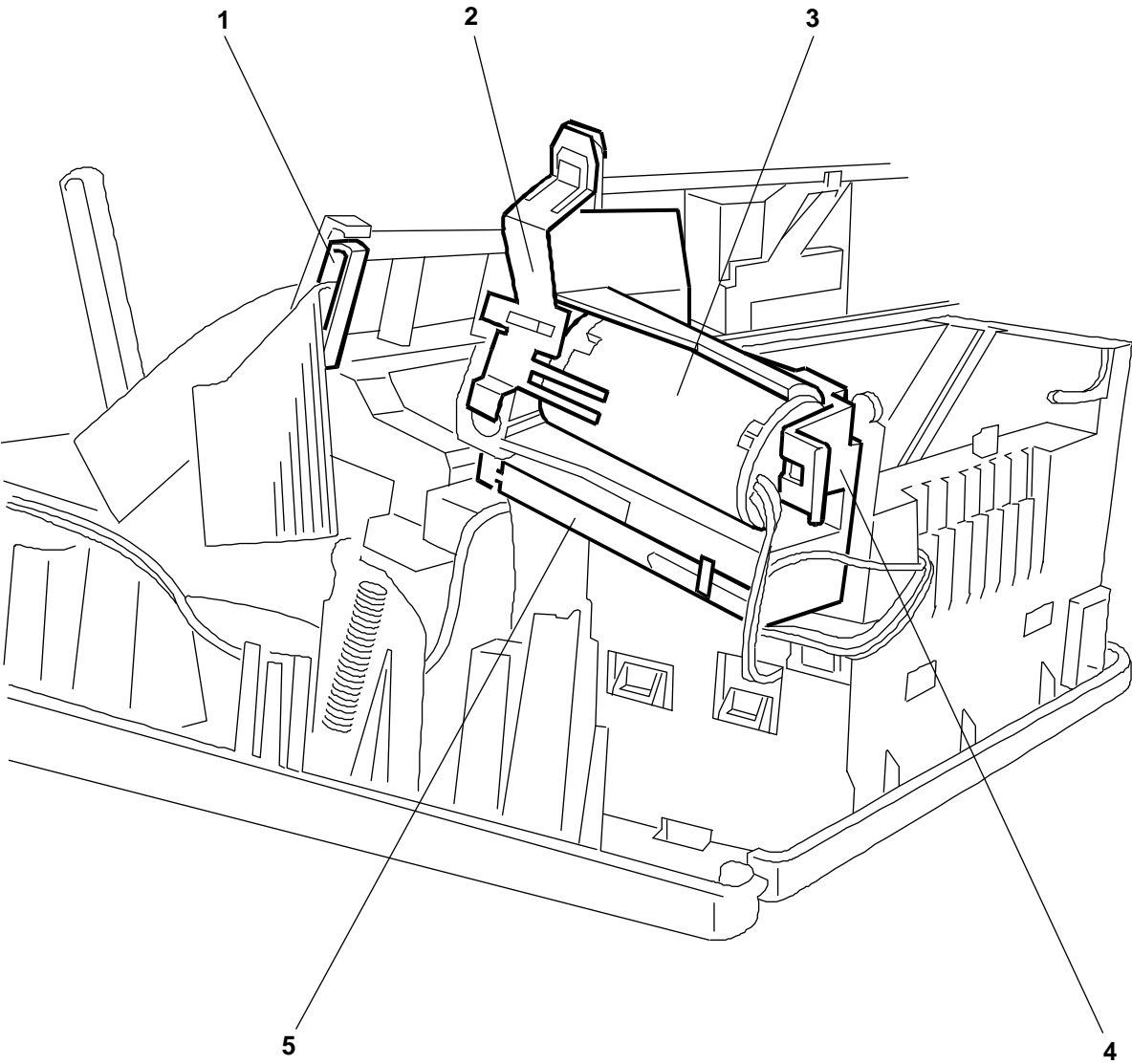


REF.	CODE	DESCRIZIONE	DESCRIPTION
1	582751 S	TRAVERSA POMPA	PUMP BAR ASSEMBLY WITH
2	581298 U	CAVALLOTTO PER SUPP. SX	U-BOLT FOR LEFT SUPPORT
3	581058 W	MOLLA TENDICINGHIA	BELT TENSION SPRING
4	581057 M	SUPPORTO SINISTRO	LEFT SUPPORT
5	581056 L	PULEGGIA TENDICINGHIA	BELT TENSION PULLEY
6	581043 P	CINGHIA TRASPORTO CARTA	PAPER TRANSPORT BELT
7	581032 C	MOTORE TRASPORTO CARTA	PAPER TRANSPORT MOTOR
8	582139 M	SCHERMO MOTORE	MOTOR PROTECTION
9	581142 P	MOLLA PER ANTIMACCHIA	SPRING FOR ANTI-SPOT
10	581145 J	GRUPPO ROTELLE A PICCHI ANTIMACCHIA	TOOTHED WHEEL ANTI-SPOT ASSEMBLY

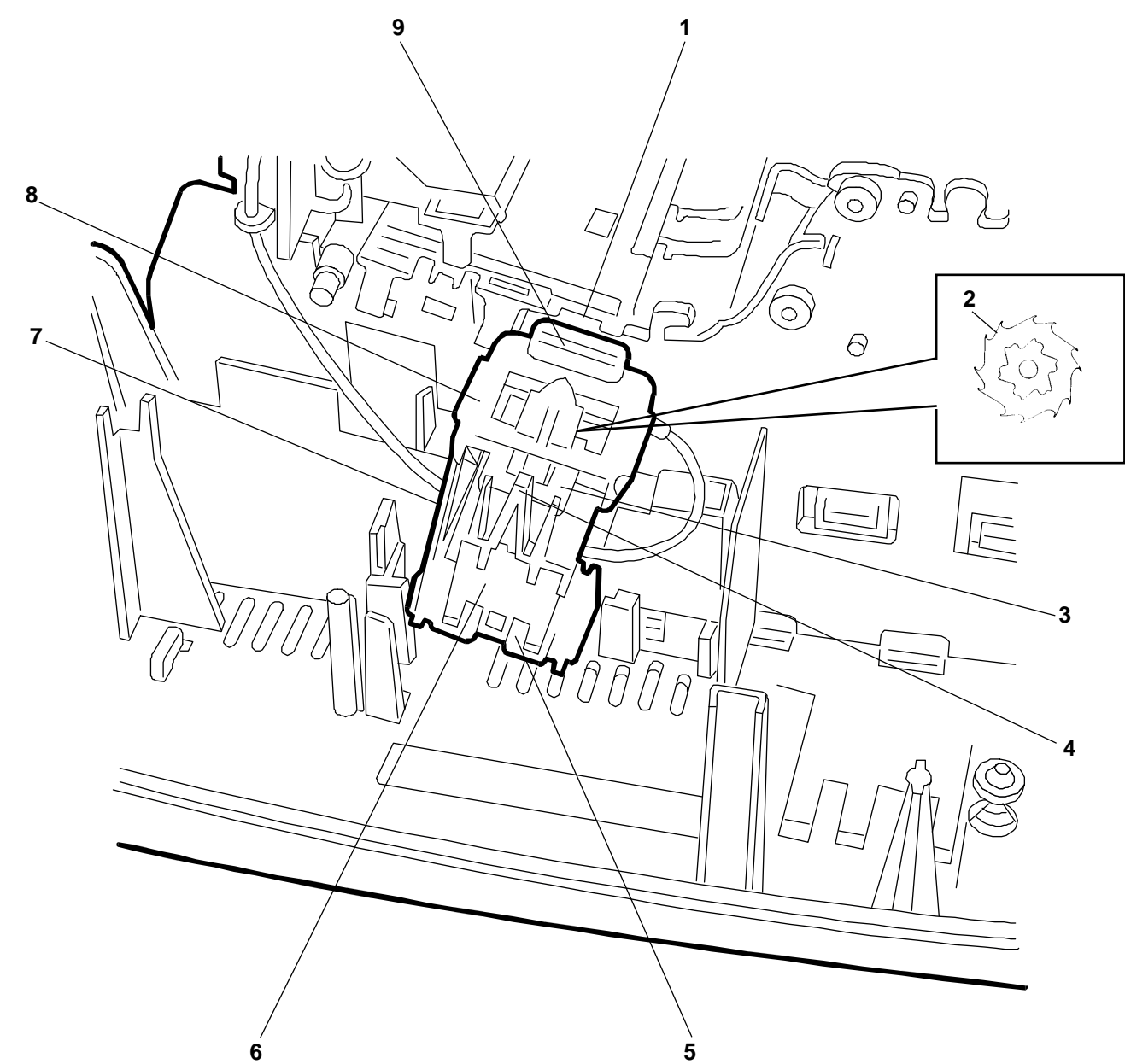


GRUPPO MOTORE CARRELLO -CARRIAGE MOTOR ASSEMBLY JP 470

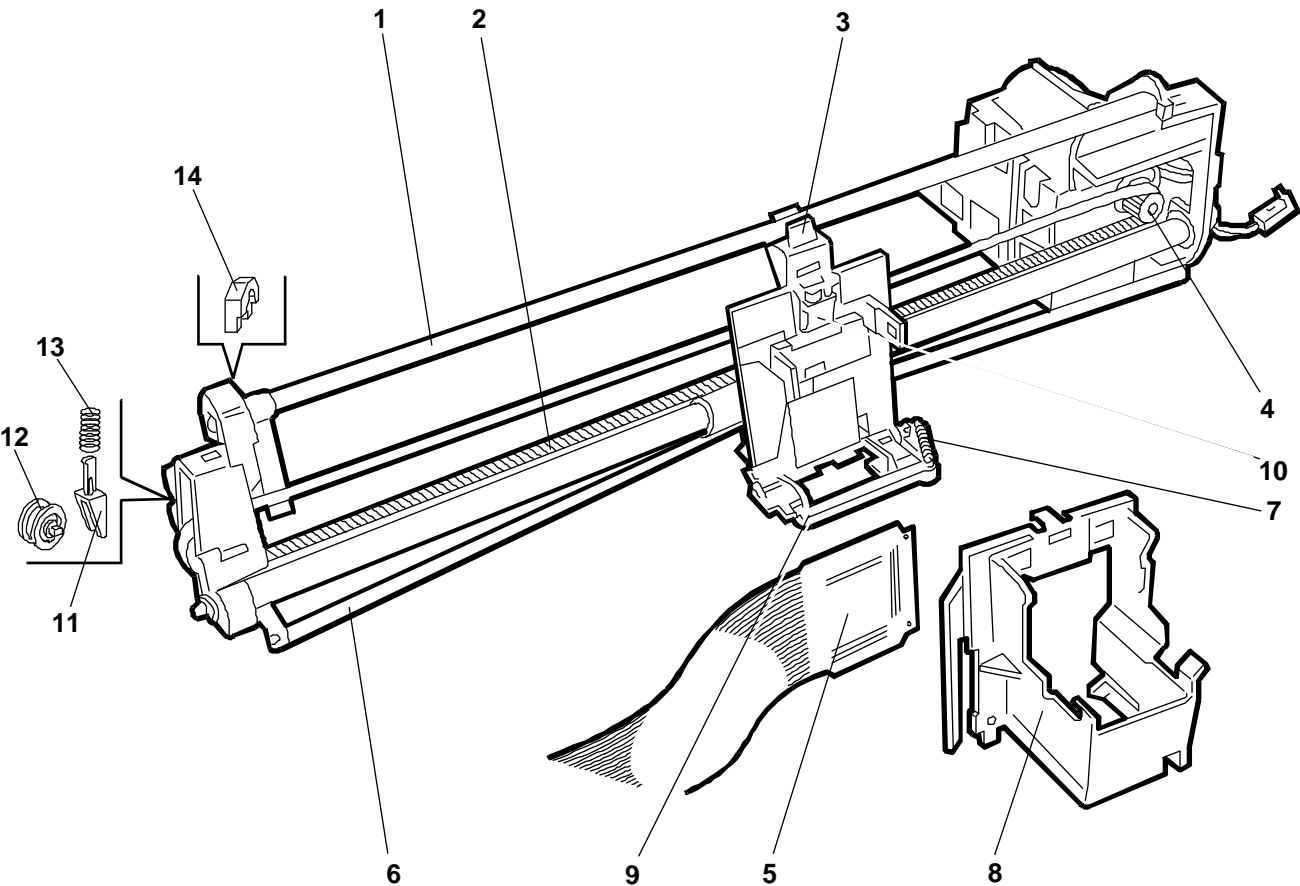
REF.	CODE	DESCRIZIONE	DESCRIPTION
1	581066 N	FERRITE	FERRITE
2	581809 V	SCHERMO MOTORE CARREL.	CARRIAGE MOTOR PROTECT.
3	581050 S	MOTORE CARRELLO	CARRIAGE MOTOR
4	581049 V	SUPP. MOTORE CARRELLO	CARRIAGE MOTOR SUPPORT
5	581052 Q	MOLLA PER RIGA LINEARE	SPRING FOR LINE



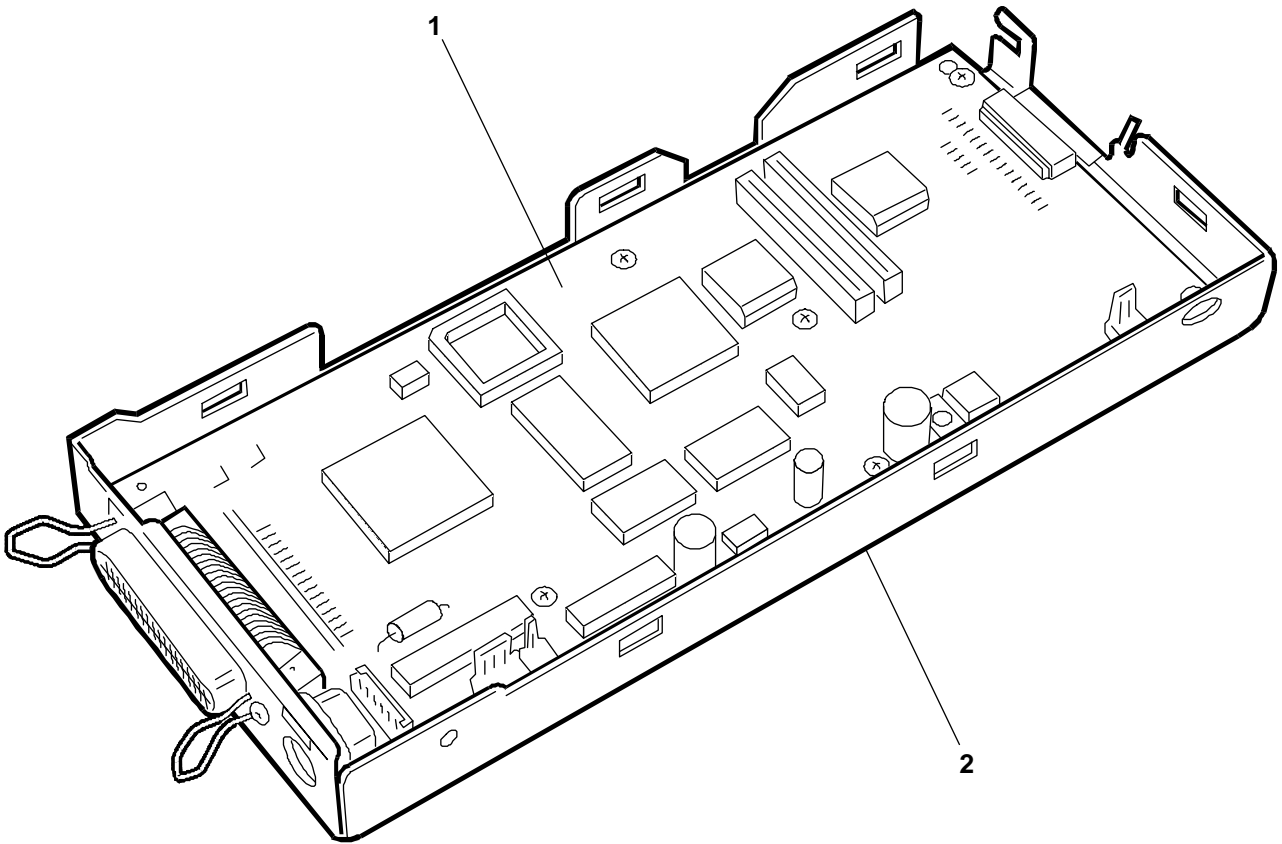
REF.	CODE	DESCRIZIONE	DESCRIPTION
1	582586 E	TERGITESTINA	CLEAN HEAD
2	582583 B	RUOTA STAZIONE	STATION GEAR
3	582585 D	SUPPORTO TERGITESTINA	CLEAN HEAD SUPPORT
4	582576 K	SUPPORTO INTERMEDIO	INTERMEDIATE SUPPORT
5	582575 J	SUPPORTO INFERIORE	LOWER SUPPORT
6	582578 V	LAMIERA DI TRAZIONE	TRACTION PLATE
7	582579 W	LAMIERA COMPRESSIONE	COMPRESSION PLATE
8	582588 Q	GR. MONTAGGIO POLMONE	PLENUM CHAMBER ASSY
9	789333 E	GOMMINO ASPIRAZIONE	HEAD PLUG



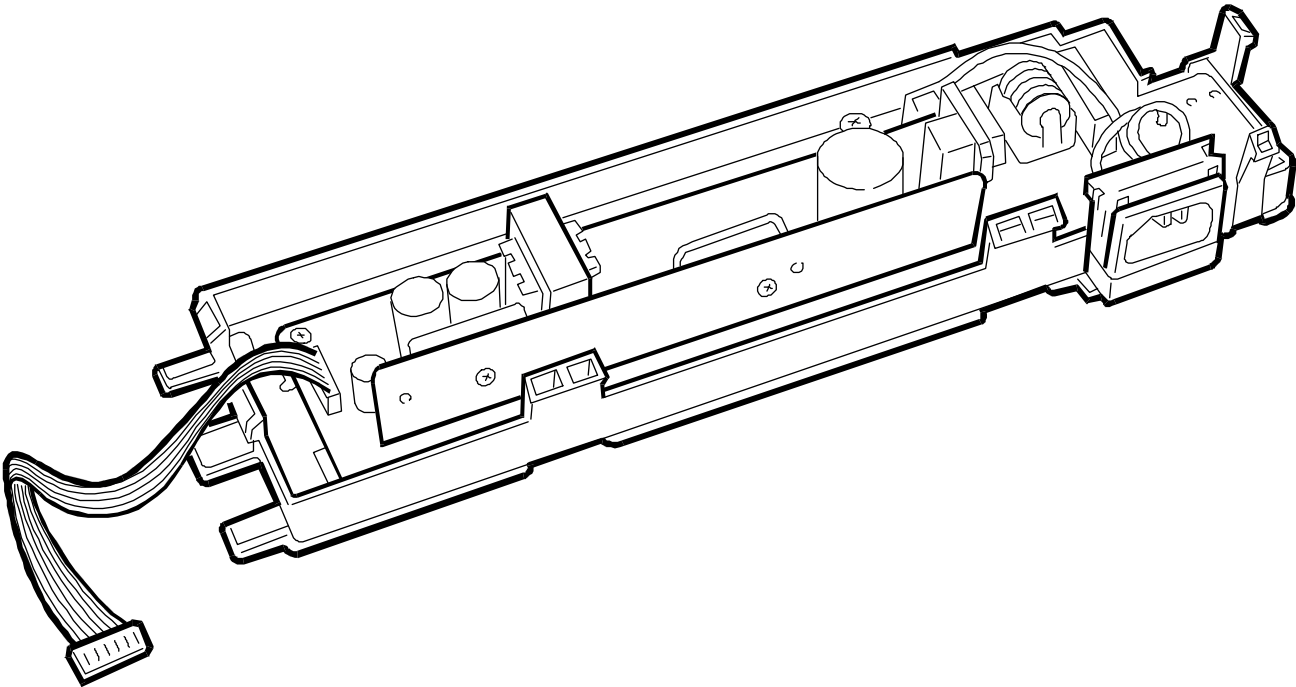
REF.	CODE	DESCRIZIONE	DESCRIPTION
1	581055 K	ALBERO CARRELLO SUP.	UPPER CARRIAGE SHAFT
2	581053 R	CINGHIA CARRELLO	CARRIAGE BELT
3	582519 J	GRUPPO CARRELLO	CARRIAGE GROUP
4	581050 S	MOTORE CARRELLO	CARRIAGE MOTOR
5	582533 G	GRUPPO CAVO FLAT	FLAT CABLE GROUP
6	582119 R	RIGA LINEARE	LINEAR RULER
7	582582 A	MOLLA CARRELLO	CARRIAGE SPRING
8	581064 L	COPERCHIO CARRELLO	CARRIAGE COVER
9	582581 H	LEVA CARRELLO	CARRIAGE LEVER
10	789216 H	LEVA FERMA TESTINA	HEAD STOPPED LEVER
11	789732 E	CUNEO TENDICINGHIA	BELT TENSION WEDGE
12	581056 L	PULEGGIA CINGHIA	BELT PULLEY
13	581058 W	MOLLA TENDICINGHIA	BELT TENSION SPING
14	581298 U	CAVALLOTTO PER SUPP.SX	U-BOLT FOR LEFT SUPPORT



REF.	CODE	DESCRIZIONE	DESCRIPTION
1	612790 B 582755 W	PIASTRA BASE SCHERMO SUPPORTO PCB	MOTHER BOARD PCB SUPPORT PROTECTION



REF.	CODE	DESCRIZIONE	DESCRIPTION
	582527 A	ALIMENTATORE 220V	POWER SUPPLY 220V
	582525 G	ALIMENTATORE 110V	POWER SUPPLY 110V



INDICE GENERALE DEI CODICI

GENERAL CODES INDEX

INDICE GENERALE DEI CODICI **GENERAL CODES INDEX**

JP 470
JP 470

CODICE CODE	PAGINA PAGE	CODICE CODE	PAGINA PAGE	CODICE CODE	PAGINA PAGE	CODICE CODE	PAGINA PAGE
581022 A	7	582137 B	6				
581023 B	7	582139 M	8				
581024 C	7	582380 T	6				
581029 R	6	582382 R	6				
581032 C	8	582382 R	7				
581039 K	6	582383 J	6				
581039 K	7	582402 N	4				
581040 Y	7	582519 J	11				
581043 P	7	582521 C	4				
581043 P	8	582525 G	13				
581045 R	6	582527 A	13				
581047 K	6	582533 G	11				
581049 V	9	582571 N	4				
581050 S	11	582574 R	6				
581050 S	9	582575 J	10				
581052 Q	9	582576 K	10				
581053 R	11	582578 V	10				
581055 K	11	582579 W	10				
581056 L	11	582581 H	11				
581056 L	8	582582 A	11				
581057 M	8	582583 B	10				
581058 W	11	582585 D	10				
581058 W	8	582586 E	10				
581064 L	11	582588 Q	10				
581066 N	9	582593 D	4				
581086 B	4	582743 S	4				
581092 H	7	582743 S	5				
581093 A	7	582751 S	6				
581094 B	7	582751 S	8				
581095 C	7	582755 W	12				
581096 D	7	582767 S	7				
581097 E	7	612790 B	12				
581102 Q	7	789216 H	11				
581120 M	5	789333 E	10				
581142 P	8	789732 E	11				
581145 J	8						
581188 N	7						
581198 Q	4						
581288 S	7						
581298 U	11						
581298 U	8						
581749 F	6						
581809 V	9						
582119 R	11						
582133 F	7						

STATO DI AGGIORNAMENTO UPDATING STATUS

[illegible]