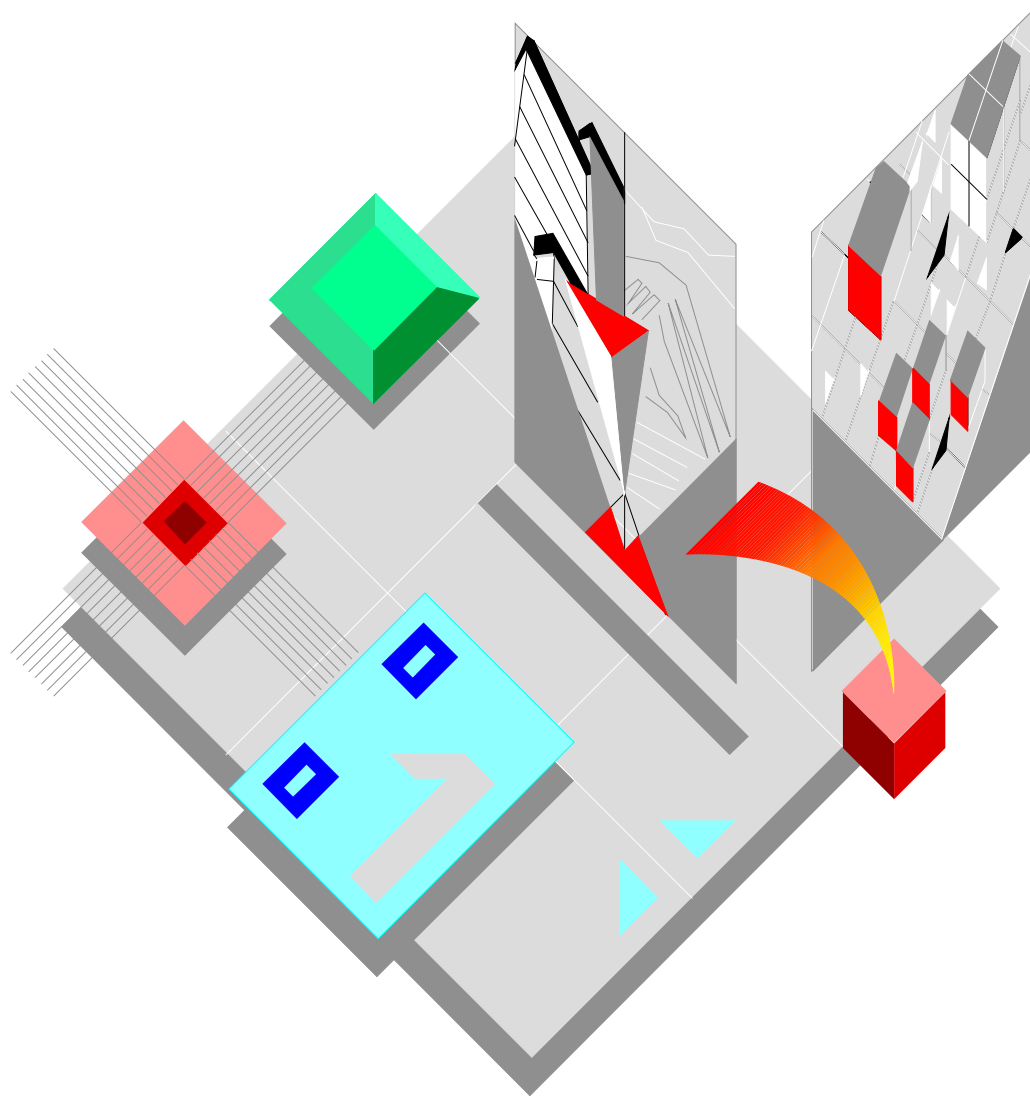


Field Engineering Library



JP 70

**CATALOGO PARTI DI RICAMBIO
SPARE PARTS CATALOGUE**

Copyright © 1996 Olivetti Lexikon S.p.A.

olivetti

Stampante - Printer

JP 70

CATALOGO PARTI DI RICAMBIO
SPARE PARTS CATALOGUE

Code 2720490R-00

IMPORTANTE

PUBBLICAZIONE REDATTA DA OLIVETTI LEXIKON (GESTIONE RICAMBI E SCORTE).
QUESTO CATALOGO È L' UNICO DOCUMENTO AL QUALE FARE RIFERIMENTO PER
ORDINARE LE PARTI DI RICAMBIO.

PER EVENTUALI INFORMAZIONI RIVOLGERSI AL NUMERO:

FAX: +39.125.524025

IMPORTANT

THIS PUBLICATION IS WRITTEN BY OLIVETTI LEXIKON (SPARE PARTS DEPARTMENT).
THIS CATALOGUE IS THE ONLY DOCUMENT TO WHICH REFERENCE MAY BE MADE
FOR ORDERING SPARE PARTS.

REQUESTS FOR ADDITIONAL INFORMATION SHOULD BE FAXED TO THE FOLLOWING
NUMBER:

FAX: +39.125.524025.

NOTA : Per ordinare correttamente i rispettivi colori di "Carrozzeria" attenersi alla seguente tabella.

CN 01	Carrozzeria, grigio chiaro	variante, P.d.G.	CAR 169
CN 107	Carrozzeria, grigio/azzurro	variante, P.d.G.	CAR 170
CN 111	Carrozzeria, grigio/antracite	variante, P.d.G.	CAR 171
NB 40	Carrozzeria, rosso (ECOS)	variante, P.d.G.	CAR 174

NOTE : In order to order the correct colours for the "Casings", please refer to the following table.

CN 01	Casing, light grey	variant, P.d.G.	CAR 169
CN 107	Casing, grey/light blue	variant, P.d.G.	CAR 170
CN 111	Casing, grey/anthracite	variant, P.d.G.	CAR 171
NB 40	Casing, red (ECOS)	variant, P.d.G.	CAR 174

JP 70

INDICE

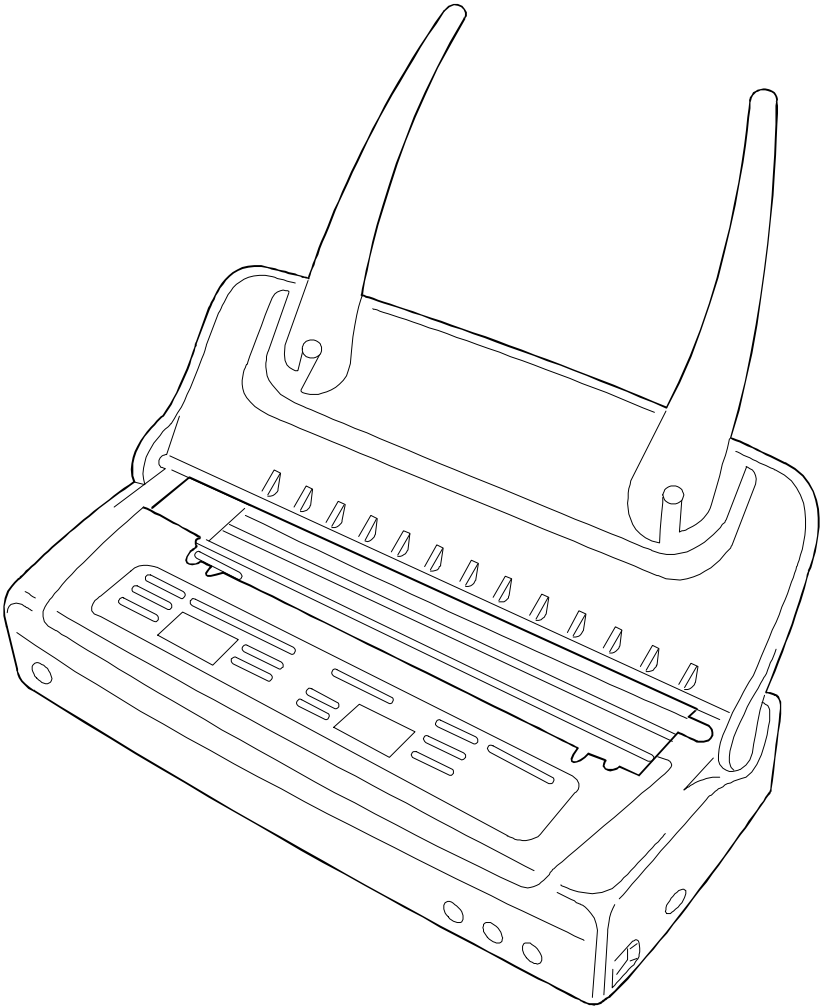
JP 70

COMPLESSIVO	Pag. 3
CARROZZERIA	" 4-5
STRUTTURA	" 6
GRUPPO ALBERO AVANZAMENTO CARTA	" 7
POMPA E RUOTE TRASPORTO CARTA	" 8-9
GRUPPO TRASPORTO CARRELLO	" 10-11
BOCCHETTA ASPIRAZIONE E ALBERO USCITA	" 12
GRUPPO A.S.F. E MOLLE TORSIONE	" 13
ALIMENTATORE	" 14
PIASTRA	" 15
INDICE GENERALE DEI CODICI	" 16

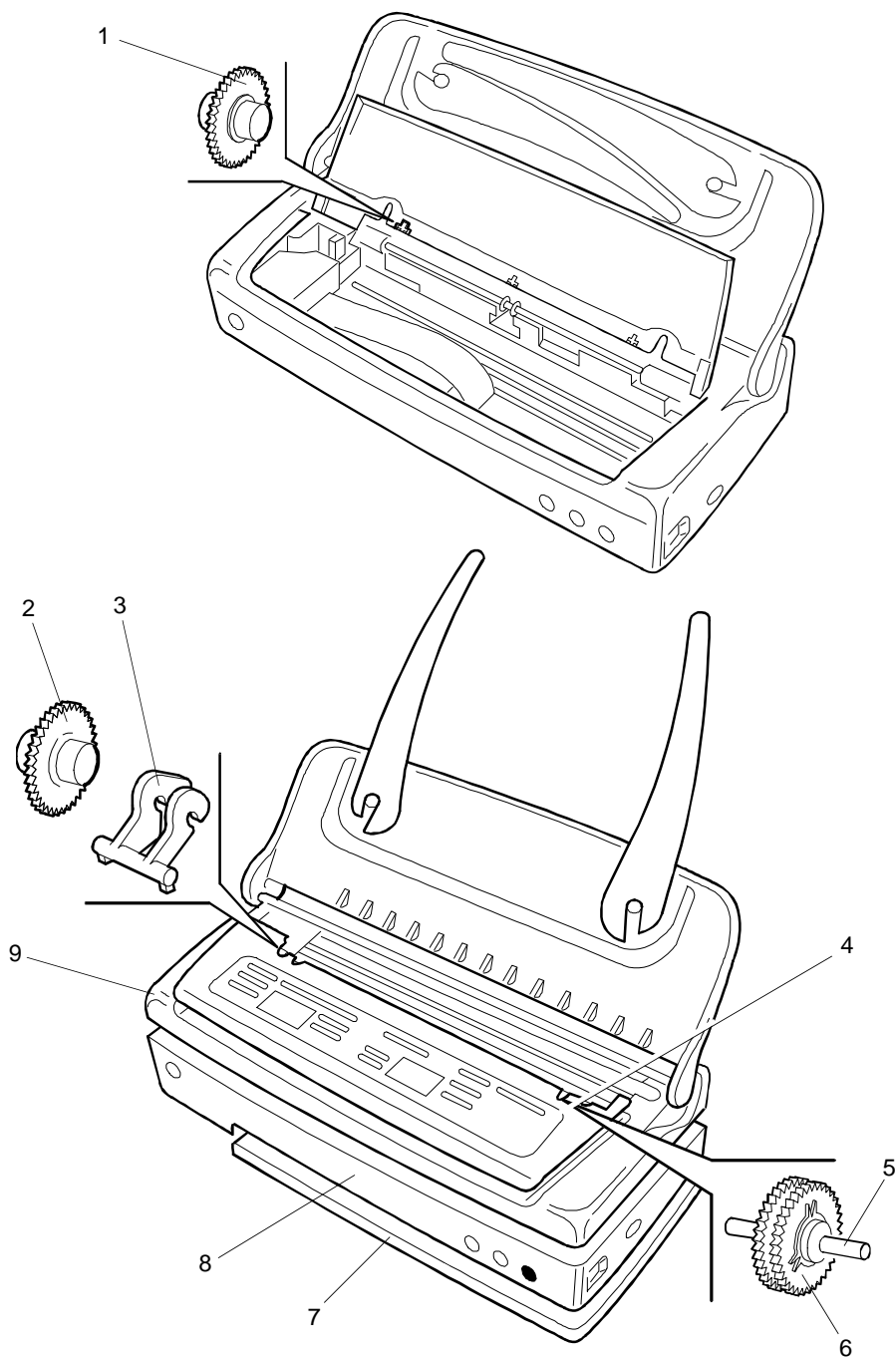
INDEX

JP 70

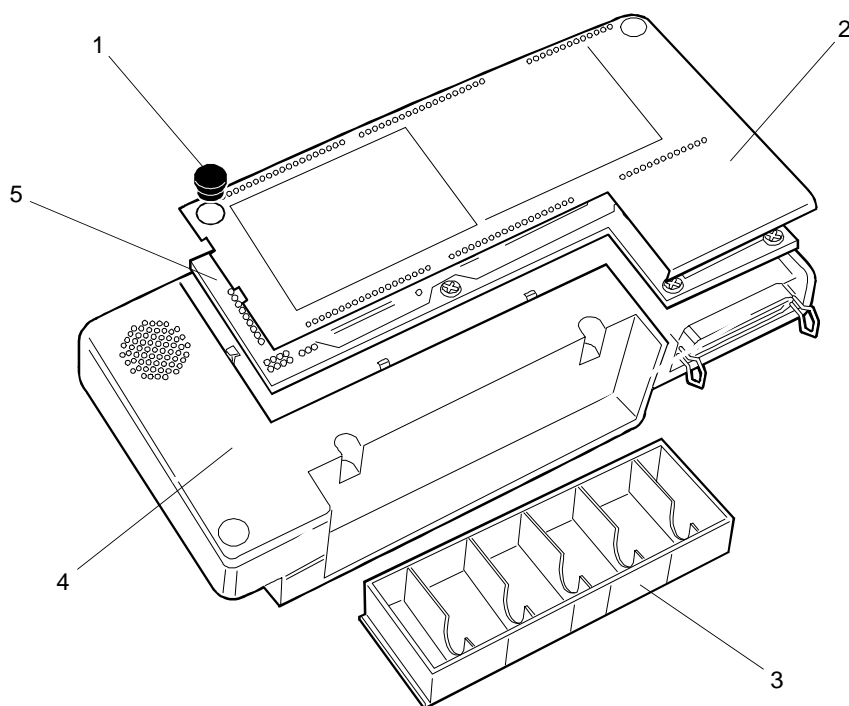
ASSEMBLY	Pag. 3
CASING	" 4-5
FRAME	" 6
TRANSPORT PAPER SHAFT	" 7
PUMP AND TRANSPORT PAPER WHEELS	" 8-9
CARRIAGE TRANSPORT ASSEMBLY	" 10-11
SUCK ASSEMBLY AND EXIT SHAFT	" 12
A.S.F. ASSEMBLY AND TORSION SPRINGS	" 13
POWER SUPPLY	" 14
BOARD	" 15
GENERAL CODES INDEX	" 16



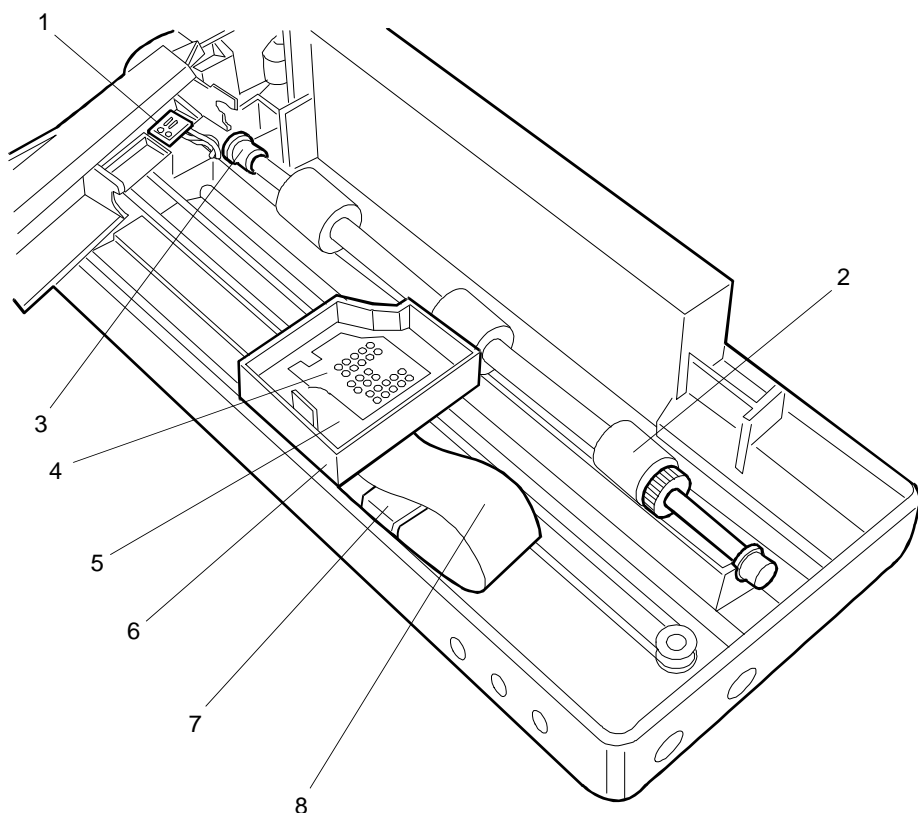
REF.	CODE	DESCRIZIONE	DESCRIPTION
1	581441 K	RUOTA ANTIMACCHIA	BLOTTER WHEEL
2	581341 W	RUOTA ANTIMACCHIA PER APPOGGIO	BLOTTER WHEEL FOR SUPPORT
3	581470 U	APPOGGIO USCITA SX	LEFT EXIT SUPPORT
4	581469 X	APPOGGIO USCITA DX	RIGHT EXIT SUPPORT
5	581342 X	SPINOTTO ELASTICO	ELASTIC PIN
6	581352 Z	GRUPPO RUOTE APPOGGIO	WHEEL GROUP SUPPORT
7	201275 P	GR. FONDELLO BASE - CN 01	BASE ASSEMBLY - CN 01
7	201277 R	GR. FONDELLO BASE - CN 107	BASE ASSEMBLY - CN 107
7	201273 M	GR. FONDELLO BASE - CN 111	BASE ASSEMBLY - CN 111
7	201260 U	GR. FONDELLO BASE - NB 40	BASE ASSEMBLY - NB 40
8	201368 U	GR. FOND. STRUTTURA - CN 01	FRAME BASE ASSY - CN 01
8	201370 S	GR. FOND. STRUTT. - CN 107	FRAME BASE ASSY - CN 107
8	201280 R	GR. FOND. STRUTT. - CN 111	FRAME BASE ASSY - CN 111
8	201372 Q	GR. FOND. STRUTTURA - NB 40	FRAME BASE ASSY - NB 40
9	201367 K	GRUPPO SCOCCA - CN 01	CASING ASSEMBLY - CN 01
9	201369 V	GRUPPO SCOCCA - CN 107	CASING ASSEMBLY - CN 107
9	201279 T	GRUPPO SCOCCA - CN 111	CASING ASSEMBLY - CN 111
9	201371 P	GRUPPO SCOCCA - NB 40	CASING ASSEMBLY - NB 40



REF.	CODE	DESCRIZIONE	DESCRIPTION
1	581322 K	PIEDINO	FOOT
2	201275 P	GR. FONDELLO BASE - CN 01	BASE ASSEMBLY - CN 01
2	201277 R	GR. FONDELLO BASE - CN 107	BASE ASSEMBLY - CN 107
2	201273 M	GR. FONDELLO BASE - CN 111	BASE ASSEMBLY - CN 111
2	201260 U	GR. FONDELLO BASE - NB 40	BASE ASSEMBLY - NB 40
3	200957 N	GR. SCATOLA PILE - CN 01	BATTERY BOX ASSY - CN 01
3	200961 J	GR. SCATOLA PILE - CN 107	BATTERY BOX ASSY - CN 107
3	200953 J	GR. SCATOLA PILE - CN 111	BATTERY BOX ASSY - CN 111
3	201262 J	GR. SCATOLA PILE - NB 40	BATTERY BOX ASSY - NB 40
4	201368 U	GR. FOND. STRUTT. - CN 01	FRAME BASE ASSY - CN 01
4	201370 S	GR. FOND. STRUTT. - CN 107	FRAME BASE ASSY - CN 107
4	201280 R	GR. FOND. STRUTT. - CN 111	FRAME BASE ASSY - CN 111
4	201372 Q	GR. FOND. STRUTT. - NB 40	FRAME BASE ASSY - NB 40
5	612712 Y	PIASTRA PER JP 70	BOARDS FOR JP 70



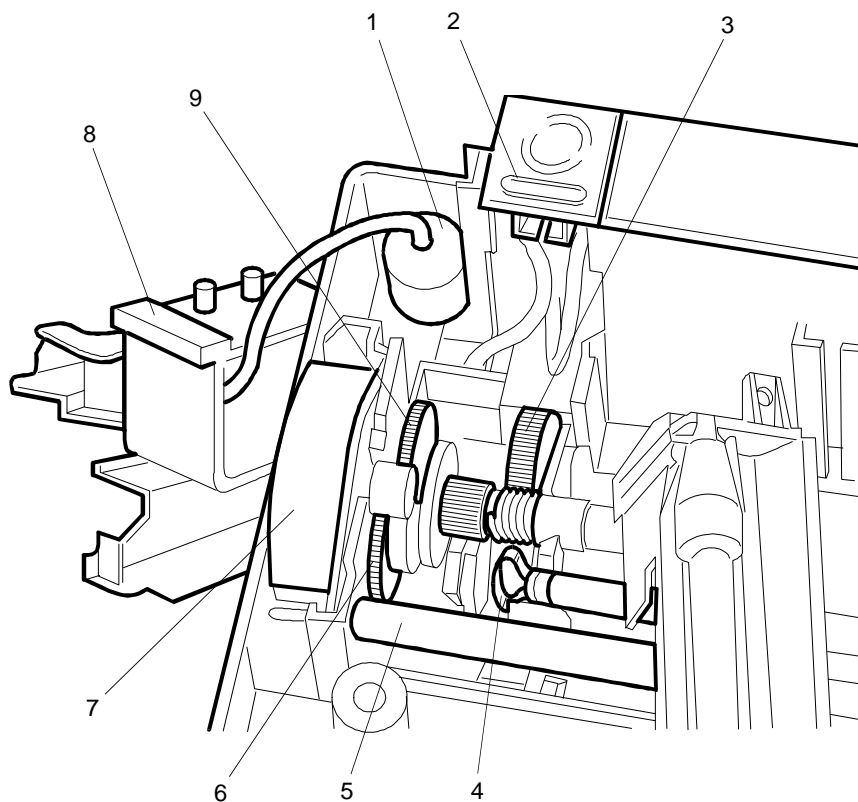
REF.	CODE	DESCRIZIONE	DESCRIPTION
1	581592 B	GR. SENSORE PRES. CARTA	PAPER PRESSURE SENSOR
2	581371 U	GRUPPO ALBERO	SHAFT ASSEMBLY
3	581379 C	CUSCINETTO IN PLASTICA	PLASTIC BEARING
4	581460 S	GOMMINO CONTRASTO FLAT	FLAT RUBBER
5	581458 U	CARRELLO	CARRIAGE
6	581462 Q	GUIDA TESTINA	HEAD GUIDE
7	581465 K	BLOCCAGGIO CAVO-FLAT	FLAT-CABLE BLOCKING
8	581467 M	CAVO-FLAT	FLAT-CABLE



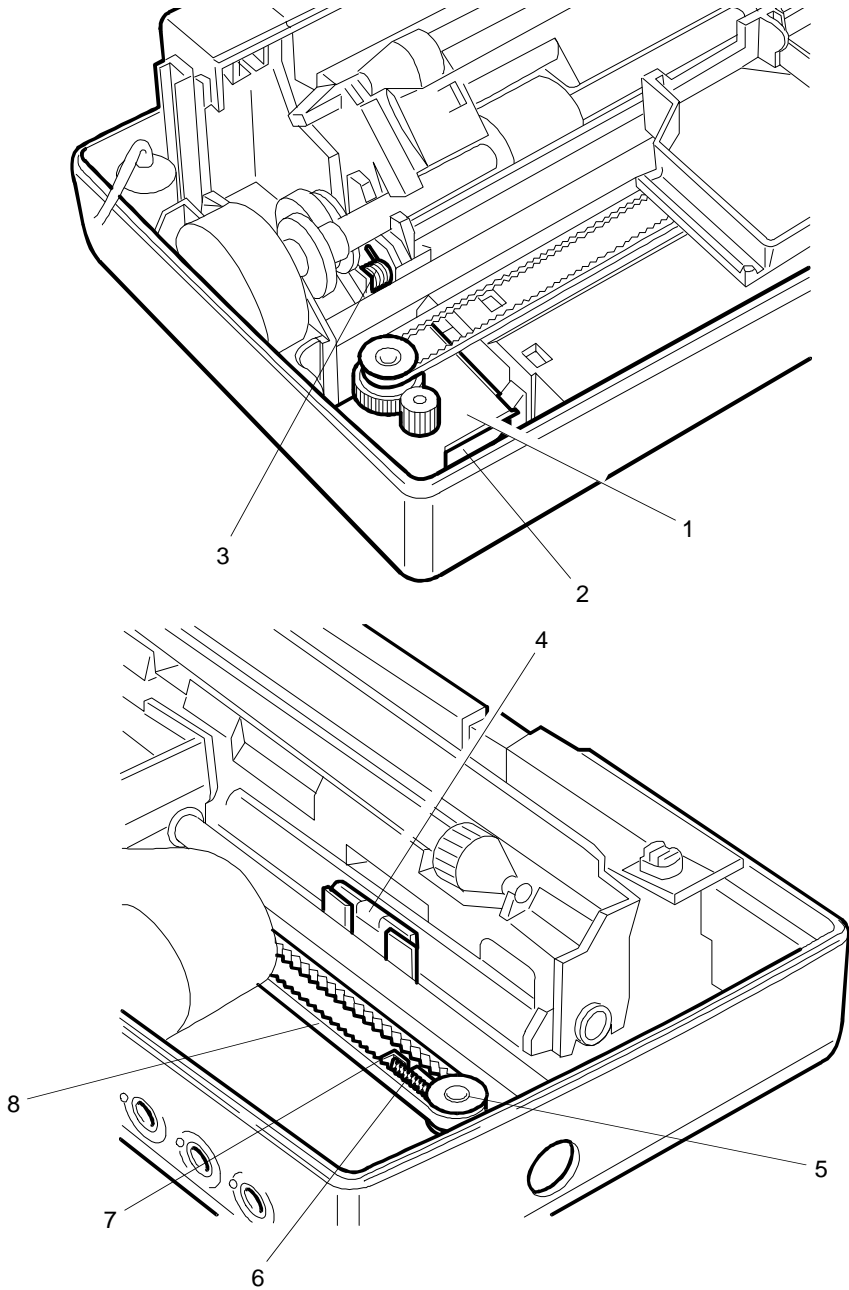
POMPA E RUOTE TRASPORTO CARTA
PUMP AND TRANSPORT PAPER WHEELS

JP 70
JP 70

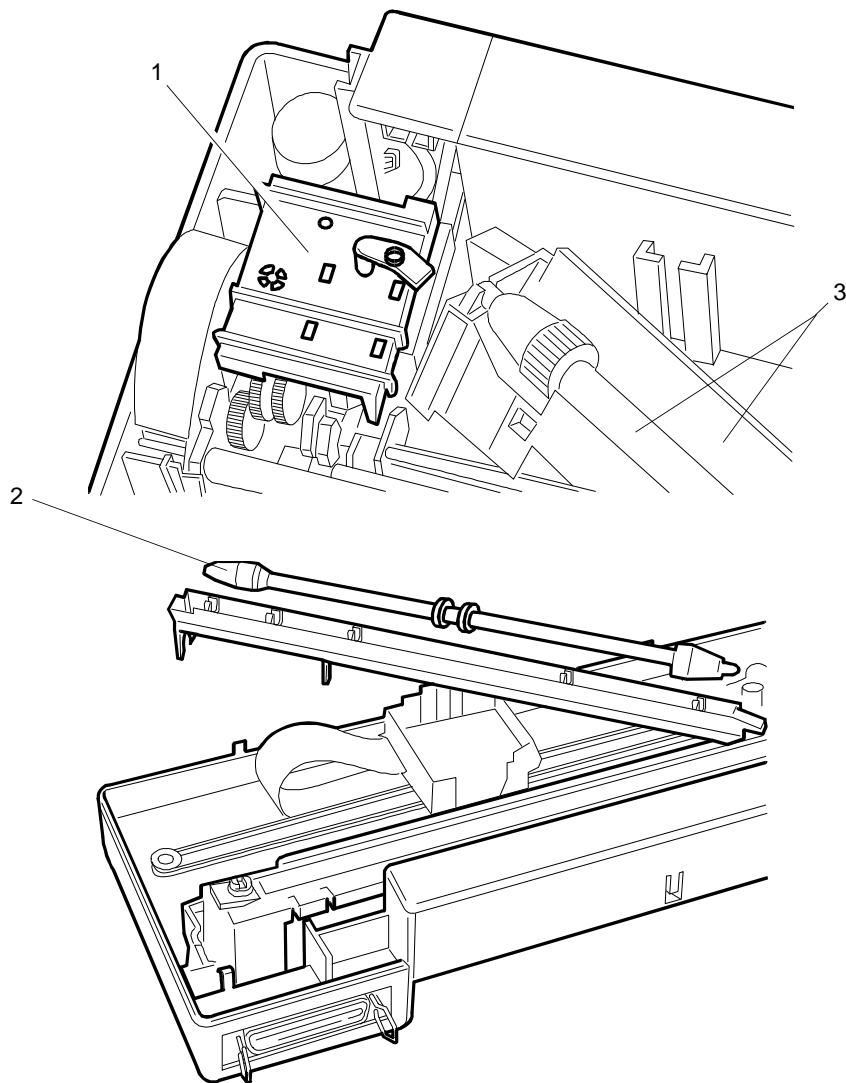
REF.	CODE	DESCRIZIONE	DESCRIPTION
1	581494 H	GRUPPO POLMONE	PLENUM CHAMBER ASSEMBLY
2	201255 K	GRUPPO POMPA - CN 01	PUMP ASSEMBLY - CN 01
2	201278 S	GRUPPO POMPA - CN 107	PUMP ASSEMBLY - CN 107
2	201253 R	GRUPPO POMPA - CN 111	PUMP ASSEMBLY - CN 111
2	201258 W	GRUPPO POMPA - NB 40	PUMP ASSEMBLY - NB 40
3	581402 M	GRUPPO ALBERO A CAMME	CAM SHAFT ASSEMBLY
4	581413 F	SELETT. PER TRASCINATORE	SELECTOR FOR TRANSPORTE
5	581464 J	ALBERO CARRELLO	CARRIAGE SHAFT
6	581433 B	RUOTA INTERMEDIA (B)	INTERMEDIATE WHEEL (B)
7	581431 H	STEP MOTORE AVANZAM. CARTA	PAPER ADVANCEMENT STEP MOTOR
8	581417 B	GR. BOCCHETTA ASPIRAZ.	VACUUM TUBE ASSEMBLY
9	581434 C	RUOTA INTERMEDIA (A)	INTERMEDIATE WHEEL (A)



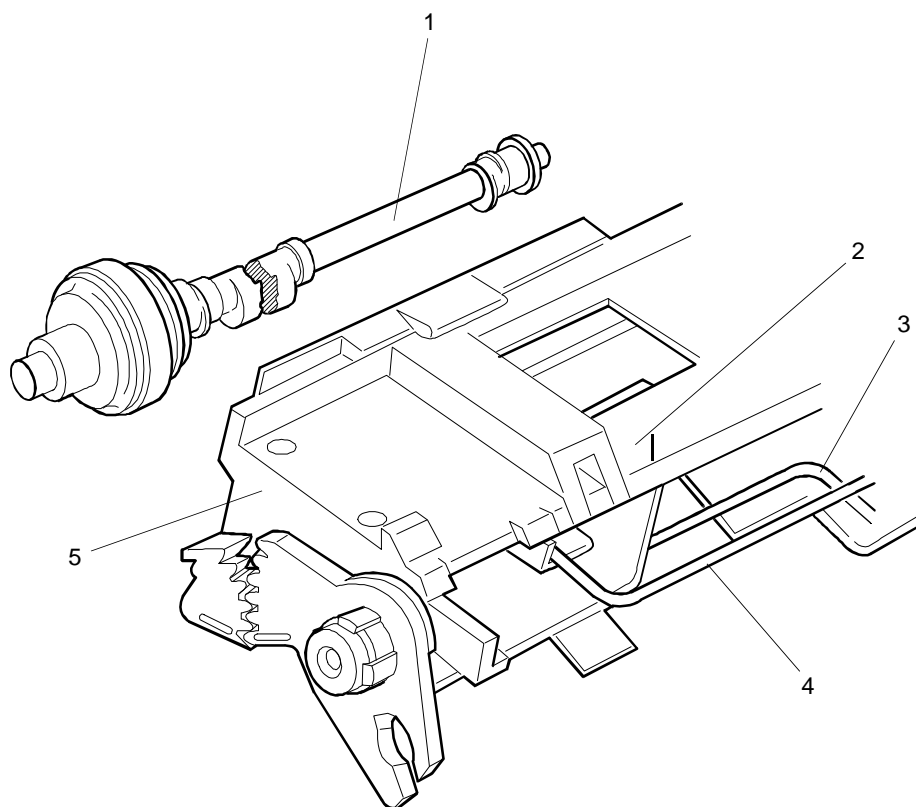
REF.	CODE	DESCRIZIONE	DESCRIPTION
1	581442 L	GR. SUPPORTO MOTORE CARRELLO	CARRIAGE MOTOR SUPPORT ASSEMBLY
2	581432 A	MOTORE CARRELLO	CARRIAGE ASSEMBLY
3	581415 H	MOLLA PER SELETTORE	SELECTOR SPRING
4	581382 Q	RULLINO DI CONTRASTO SUPERIORE	UPPER CONTRAST ROLLER
5	581451 M	PULEGGIA TENDI CINGHIA	BELT TENSION PULLEY
6	581448 S	GR. SUPPORTO TENDI CINGHIA	BEL TENSION SUPPORT
7	581452 N	MOLLA COMPRESSIONE	COMPRESSION SPRING
8	581446 Q	CINGHIA DENTATA	TOOTHED BELT



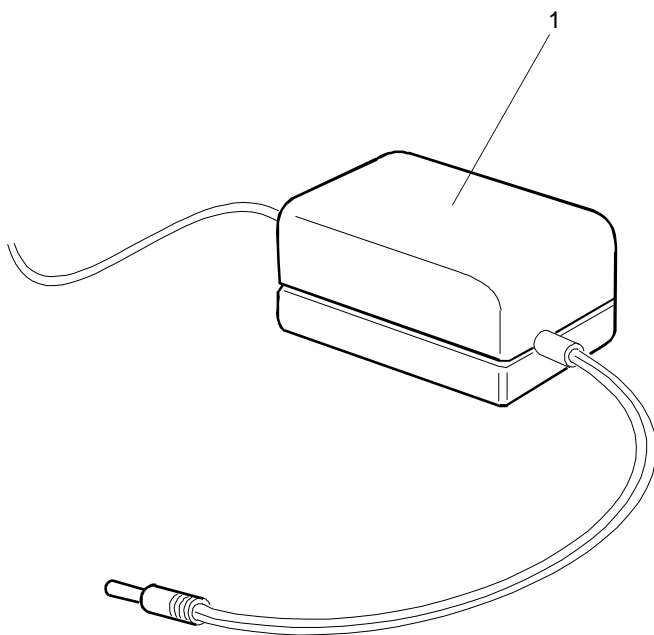
REF.	CODE	DESCRIZIONE	DESCRIPTION
1	581417 B	GR. BOCCHETTA ASPIRAZIONE	VACUUM TUBE ASSEMBLY
2	581387 M	GR. ALBERO USCITA	EXIT SHAFT ASSEMBLY
3	581385 K	GR. SUPPORTO SCRITTURA, CON GRUPPO OTTICO CAPTORE E ALBERO USCITA	PRINTING SUPPORT ASSEMBLY, WITH OPTIC CAPTURE AND EXIT SHAFT



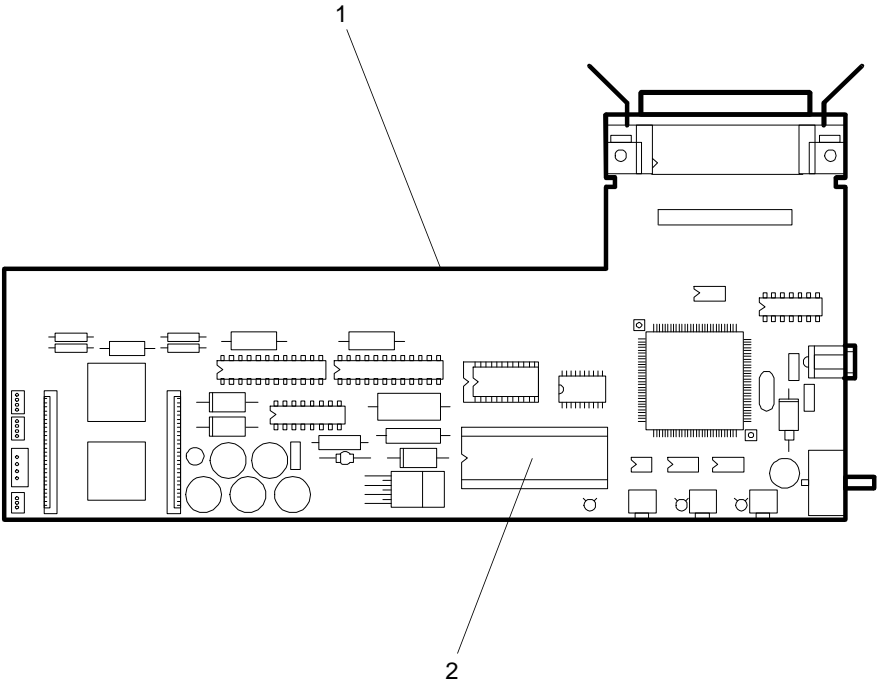
REF.	CODE	DESCRIZIONE	DESCRIPTION
1	581402 M	GRUPPO ALBERO CAMME	CAM SHAFT ASSEMBLY
2	581358 F	GR. PATTINO DI SPINTA	SLIDING OF THRUST ASSY
3	581365 W	MOLLA TORSIONE SINISTRA	LEFT TORSION SPRING
4	581361 S	MOLLA TORSIONE DESTRA	RIGHT SHAFT ASSEMBLY
5	581354 T	GRUPPO A.S.F.	A.S.F. ASSEMBLY



REF.	CODE	DESCRIZIONE	DESCRIPTION
1	581553 K	ALI 220V/50Hz EUROPA	P.S. 220V/50Hz EUROPE
	581554 L	ALI 115V/60Hz USA	P.S. 115V/60Hz USA
	581555 M	ALI 240V/50Hz U.K.	P.S. 240V/50Hz U.K.
	581556 N	ALI 240V/50Hz AUSTRALIA	P.S. 240V/50Hz AUSTRALIA
	581557 P	ALI 220V/50Hz SUD AFRICA	P.S. 220V/50Hz SOUTH AFRICA



REF.	CODE	DESCRIZIONE	DESCRIPTION
1	612712 Y	PIASTRA PER JP 70	BOARD FOR JP 70
2	582165 P	ROM PER JP 70	ROM FOR JP 70



CODICE CODE	PAGINA PAGE	CODICE CODE	PAGINA PAGE	CODICE CODE	PAGINA PAGE
200953J	6	581413F	8		
200957N	6	581415H	10		
200961J	6	581417B	8		
201253R	8	581417B	12		
201255K	8	581431H	8		
201258W	8	581432A	10		
201260U	4	581433B	8		
201260U	6	581434C	8		
201262J	6	581441K	4		
201273M	4	581442L	10		
201273M	6	581446Q	10		
201275P	4	581448S	10		
201275P	6	581451M	10		
201277R	4	581452N	10		
201277R	6	581458U	7		
201278S	8	581460S	7		
201279T	4	581462Q	7		
201280R	4	581464J	8		
201280R	6	581465K	7		
201367K	4	581467M	7		
201368U	4	581469X	4		
201368U	6	581470U	4		
201369V	4	581494H	8		
201370S	4	581553K	14		
201370S	6	581554L	14		
201371P	4	581555M	14		
201372Q	4	581556N	14		
201372Q	6	581557P	14		
581322K	6	581592B	7		
581341W	4	582165P	15		
581342X	4	612712Y	6		
581352Z	4	612712Y	15		
581354T	13				
581358F	13				
581361S	13				
581365W	13				
581371U	7				
581379C	7				
581382Q	10				
581385K	12				
581387M	12				
581402M	8				
581402M	13				

STATODIAGGIORNAMENTO

UPDATING STATUS

[illegible]