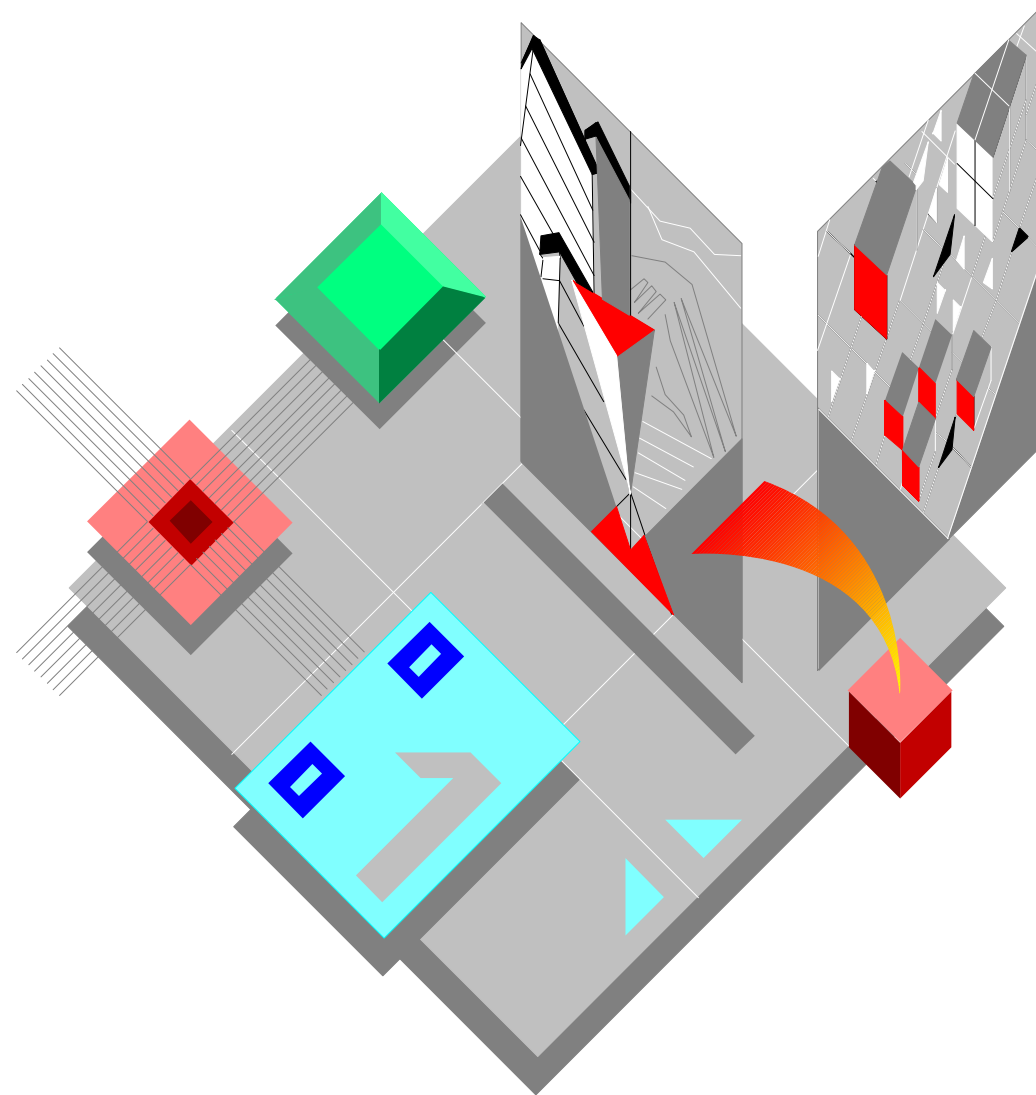


Field Engineering Library



JP 90

**CATALOGO PARTI DI RICAMBIO
SPARE PARTS CATALOGUE**

Copyright © 1996 Olivetti Lexikon S.p.A.

olivetti

Stampante - Printer

JP 90

**CATALOGO PARTI DI RICAMBIO
SPARE PARTS CATALOGUE**

Code 681650L-00

IMPORTANTE

PUBBLICAZIONE REDATTA DA OLIVETTI LEXIKON (GESTIONE RICAMBI E SCORTE).
QUESTO CATALOGO È L' UNICO DOCUMENTO AL QUALE FARE RIFERIMENTO
PER ORDINARE LE PARTI DI RICAMBIO.

PER EVENTUALI INFORMAZIONI RIVOLGERSI AL NUMERO:

FAX: +39.125.524025

IMPORTANT

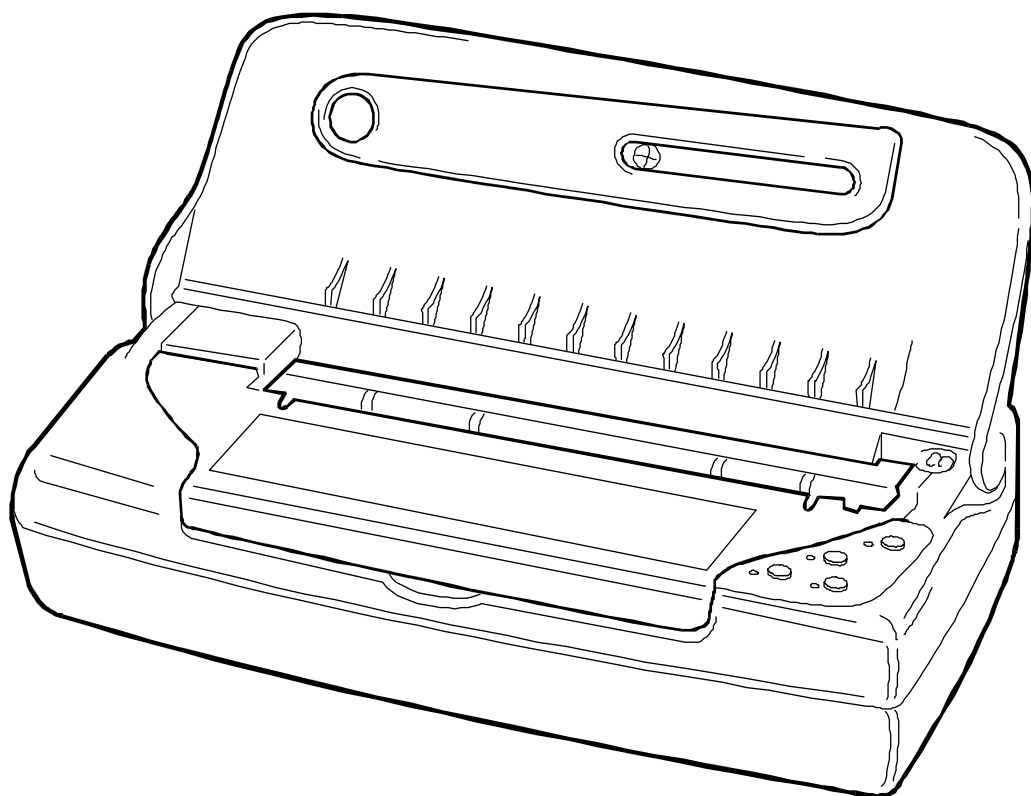
THIS PUBLICATION IS WRITTEN BY OLIVETTI LEXIKON (SPARE PARTS
DEPARTMENT).

THIS CATALOGUE IS THE ONLY DOCUMENT TO WHICH REFERENCE MAY BE
MADE FOR ORDERING SPARE PARTS.

REQUESTS FOR ADDITIONAL INFORMATION SHOULD BE FAXED TO THE
FOLLOWING NUMBER:

FAX: +39.125.524025.

JP 90



INDICE

CARROZZERIA	Pag. 3
STRUTTURA	" 4
GRUPPO STAMPA	" 5
POMPA - TRASPORTO CARTA	" 6
GRUPPO TRASPORTO CARRELLO	" 7
GRUPPO A.S.F. E MOLLE TORSIONE	" 8
ALIMENTATORE	" 9
PIASTRA	" 10

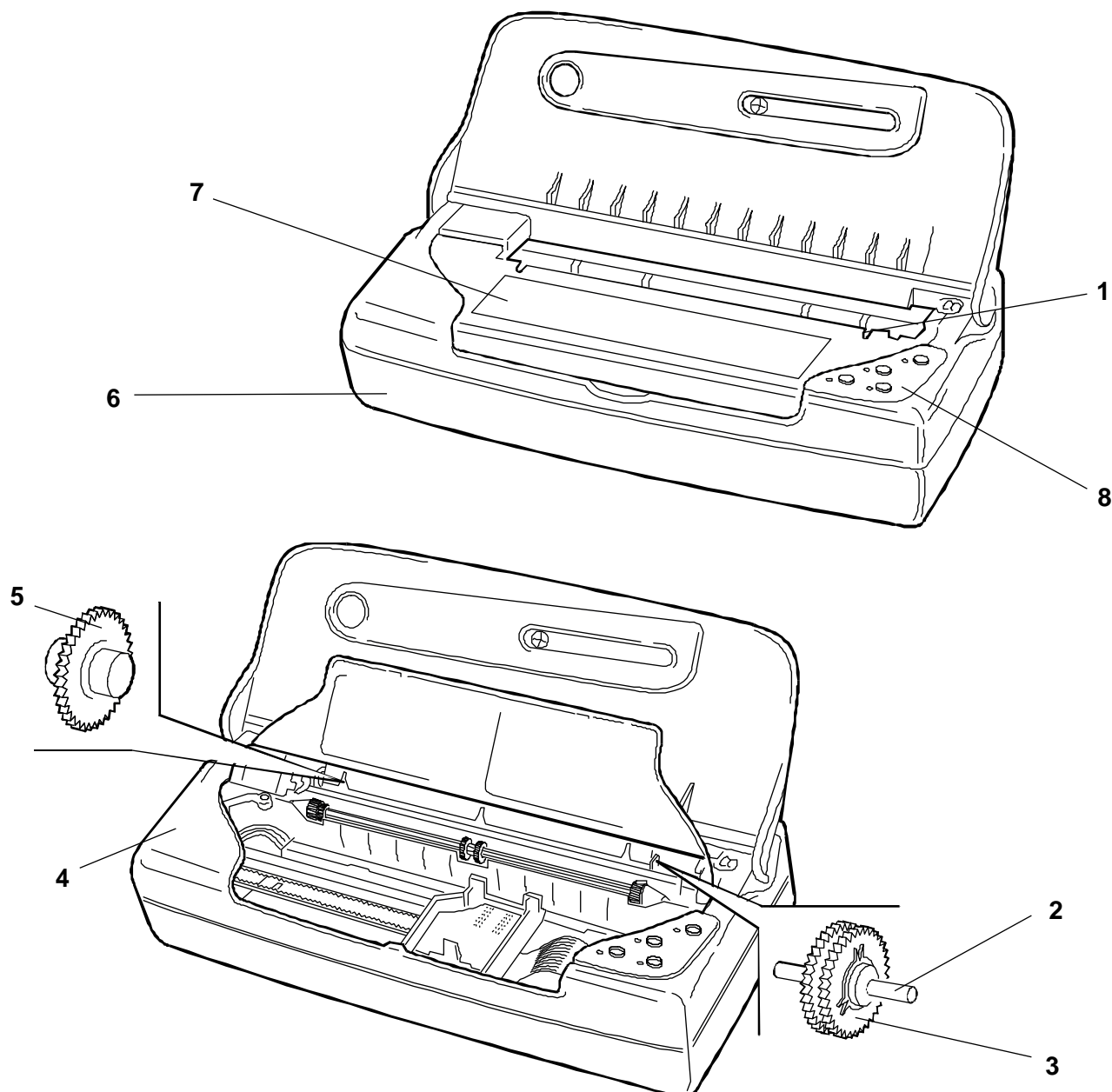
INDICE GENERALE DEI CODICI	Pag. 11
---	---------

INDEX

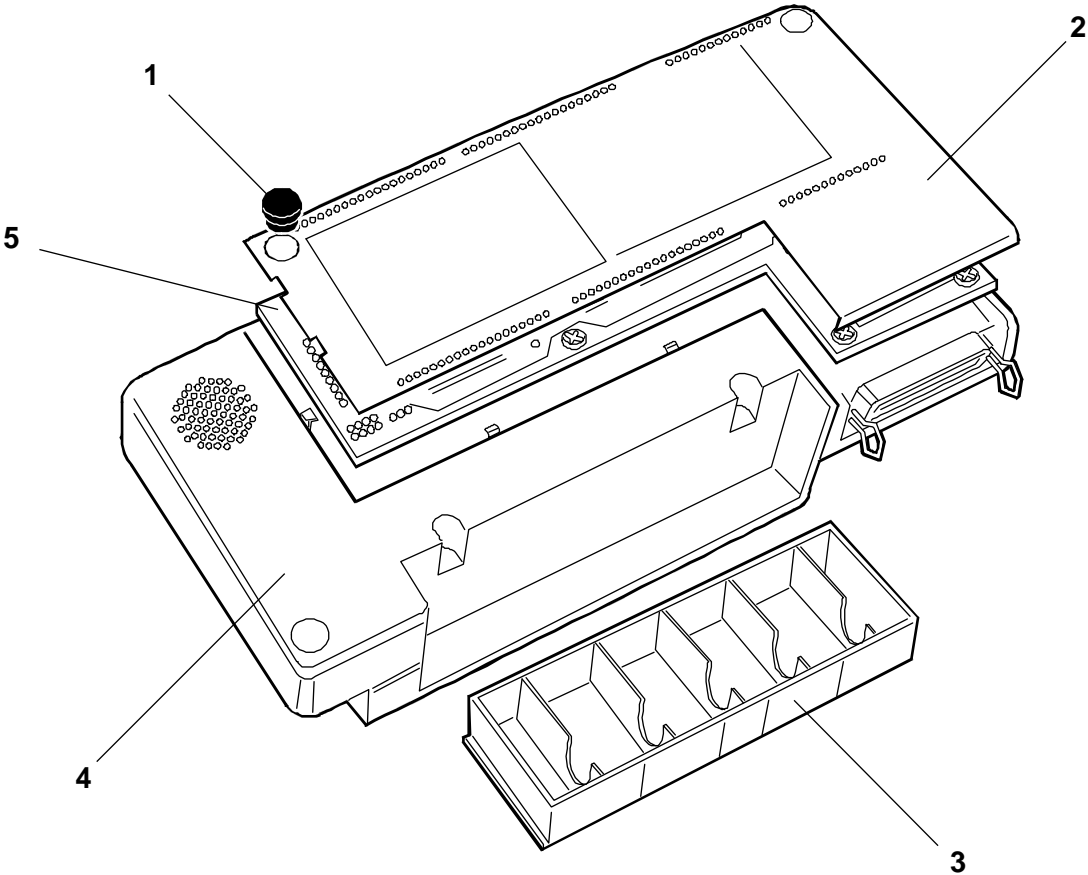
CASING	Pag. 3
FRAME	" 4
PRINTING GROUP	" 5
PUMP - TRANSPORT PAPER	" 6
CARRIAGE TRANSPORT ASSEMBLY	" 7
A.S.F. ASSEMBLY AND TORSION SPRINGS	" 8
POWER SUPPLY	" 9
BOARD	" 10

GENERAL INDEX	Pag. 11
----------------------------	---------

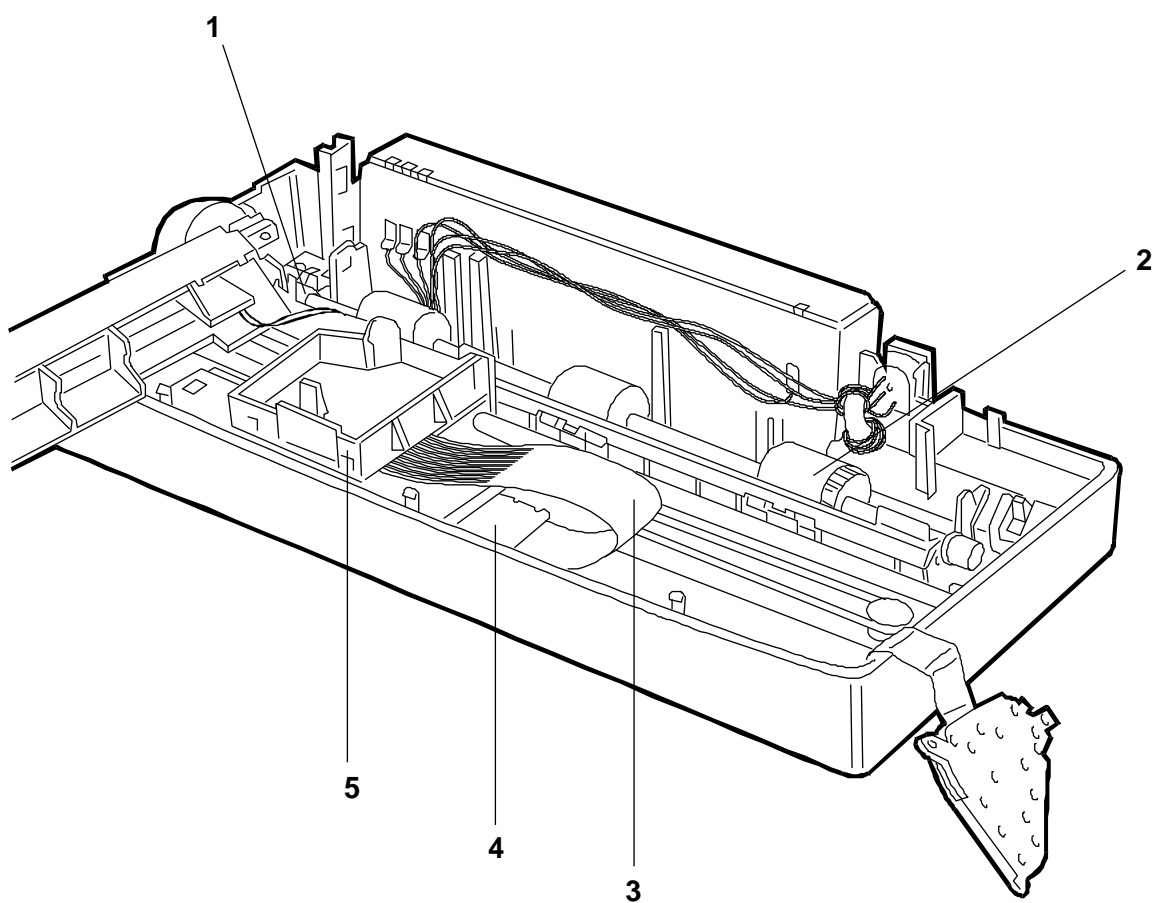
REF.	CODE	DESCRIZIONE	DESCRIPTION
1	204987 V	APPOGGIO LATERALE	SIDE SUPPORT
2	581342 X	SPINOTTO ELASTICO	SPRING
3	581352 Z	GR. RUOTE APPOGGIO	WHEEL SUPPORT ASSY
4	309986 D 309987 E	GR. SCOCCA - CN01 GR. SCOCCA - CN111	CASING ASSEMBLY - CN01 CASING ASSEMBLY - CN111
5	581441 K	RUOTA ANTIMACCHIA	BLOTTER WHEEL
6	309995 E 309999 J	GR. FONDO STRUTTURA - CN01 GR. FONDO STRUTTURA - CN111	FRAME BASE ASSY - CN01 FRAME BASE ASSY - CN111
7	309988 P 309989 Q	ETICHETTA SET-UP - CN01 ETICHETTA SET-UP - CN111	SET-UP LABEL - CN01 SET-UP LABEL - CN111
8	309990 M 309991 A	GR. CONSOLE - CN01 GR. CONSOLE - CN111	CONSOLE ASSY - CN01 CONSOLE ASSY - CN111



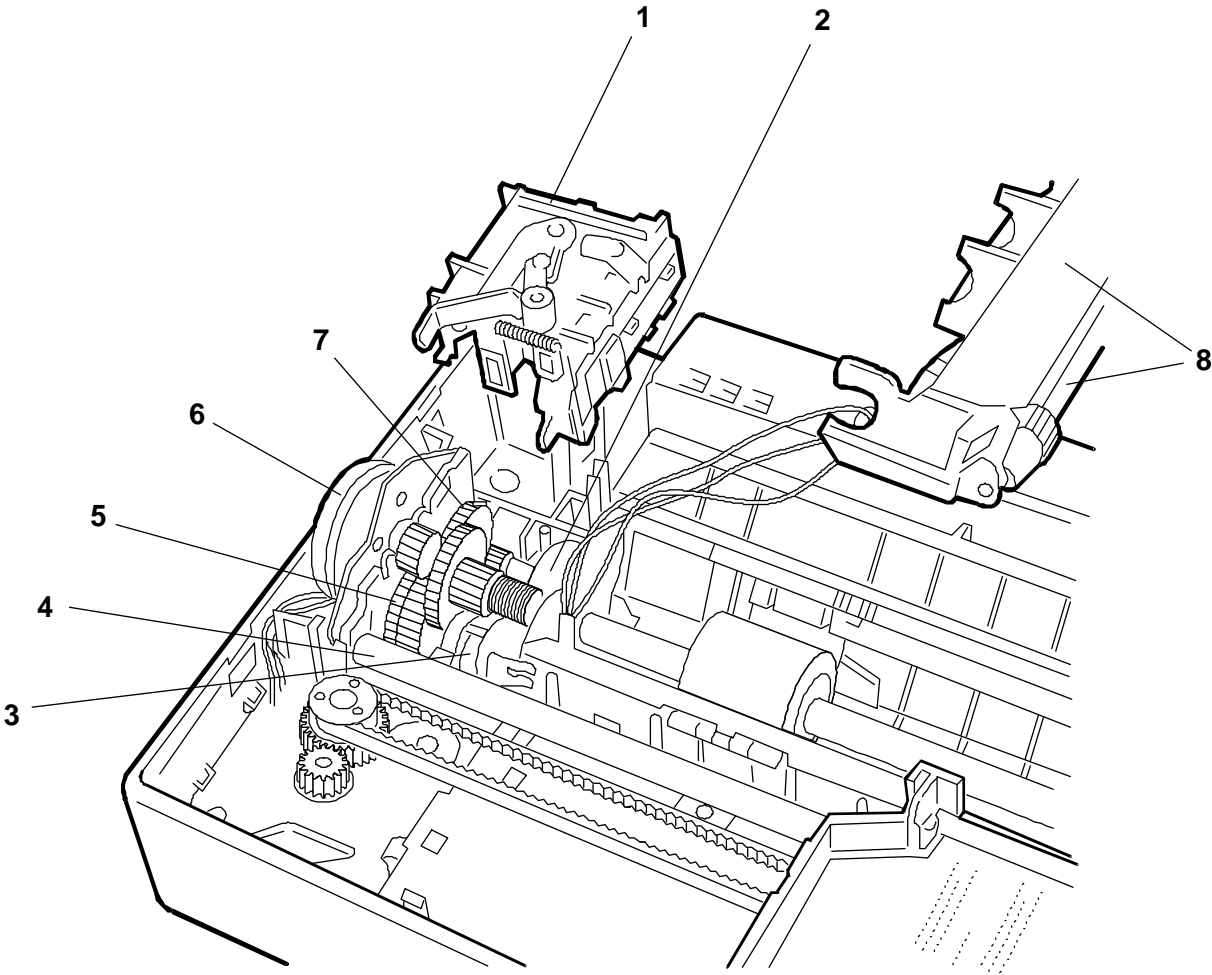
REF.	CODE	DESCRIZIONE	DESCRIPTION
1	581322 K	PIEDINO	FOOT
2	309977 K 309978 U	GR. FONDELLO BASE - CN01 GR. FONDELLO BASE - CN111	BASE ASSEMBLY - CN01 BASE ASSEMBLY - CN01
3	309973 P 309974 Q	GR. SCATOLA PILE - CN01 GR. SCATOLA PILE - CN111	BATTERY BOX - CN01 BATTERY BOX - CN111
4	309995 E 309999 J	GR. FONDO STRUTTURA - CN01 GR. FONDO STRUTTURA - CN111	FRAME BASE ASSY - CN01 FRAME BASE ASSY - CN111
5	612791 Y	PIASTRA PER JP	BOARDS FOR JP



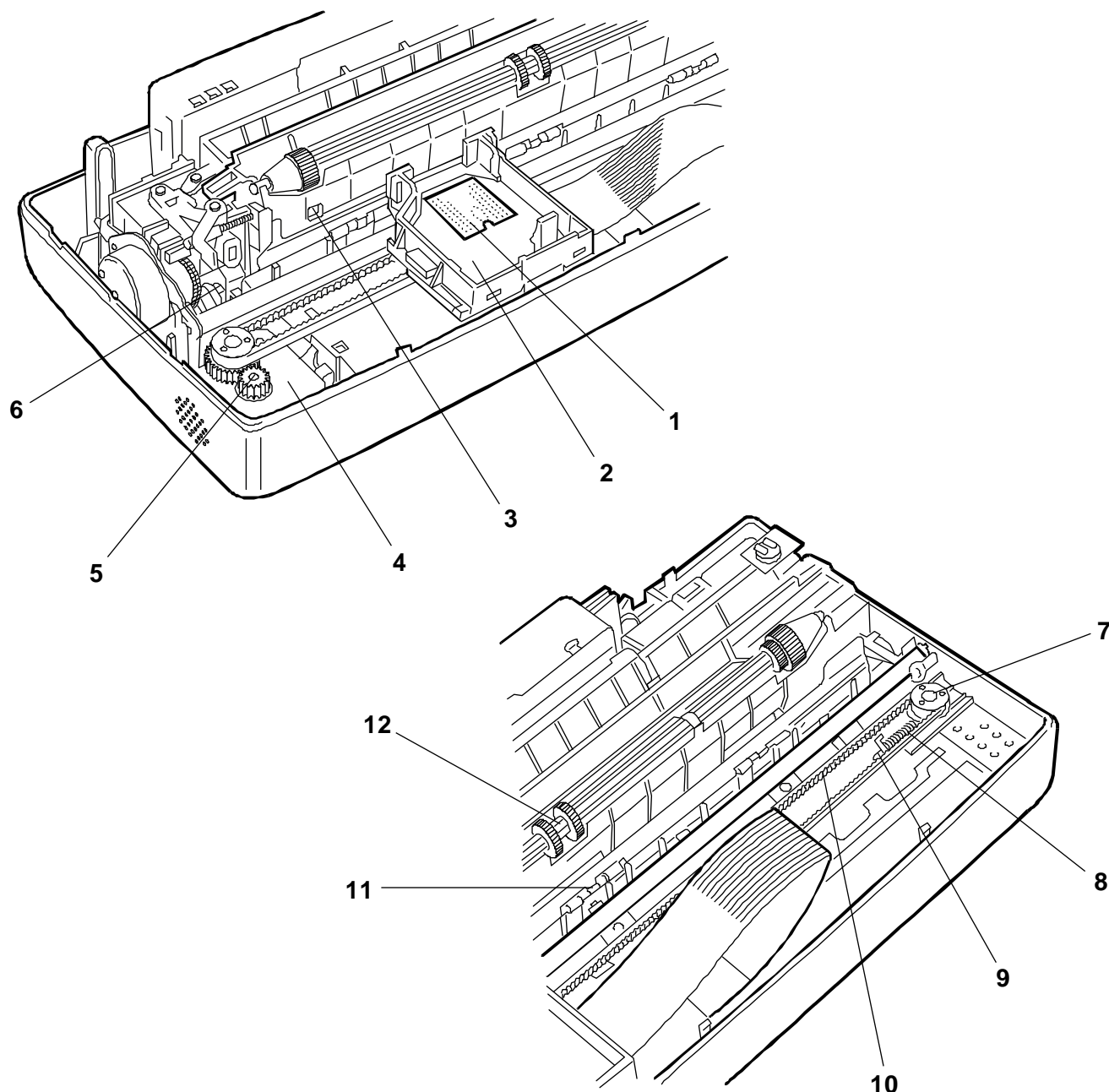
REF.	CODE	DESCRIZIONE	DESCRIPTION
1	581379 C	BOCCOLA	BUSH
2	204926 X	GRUPPO ALBERO	SHAFT ASSY
3	581929 L	CAVO FLAT	FLAT CABLE
4	581465 K	BLOCCAGGIO CAVO FLAT	FLAT CABLE BLOCKING
5	204897 T	GUIDA TESTINA	HEAD GUIDE



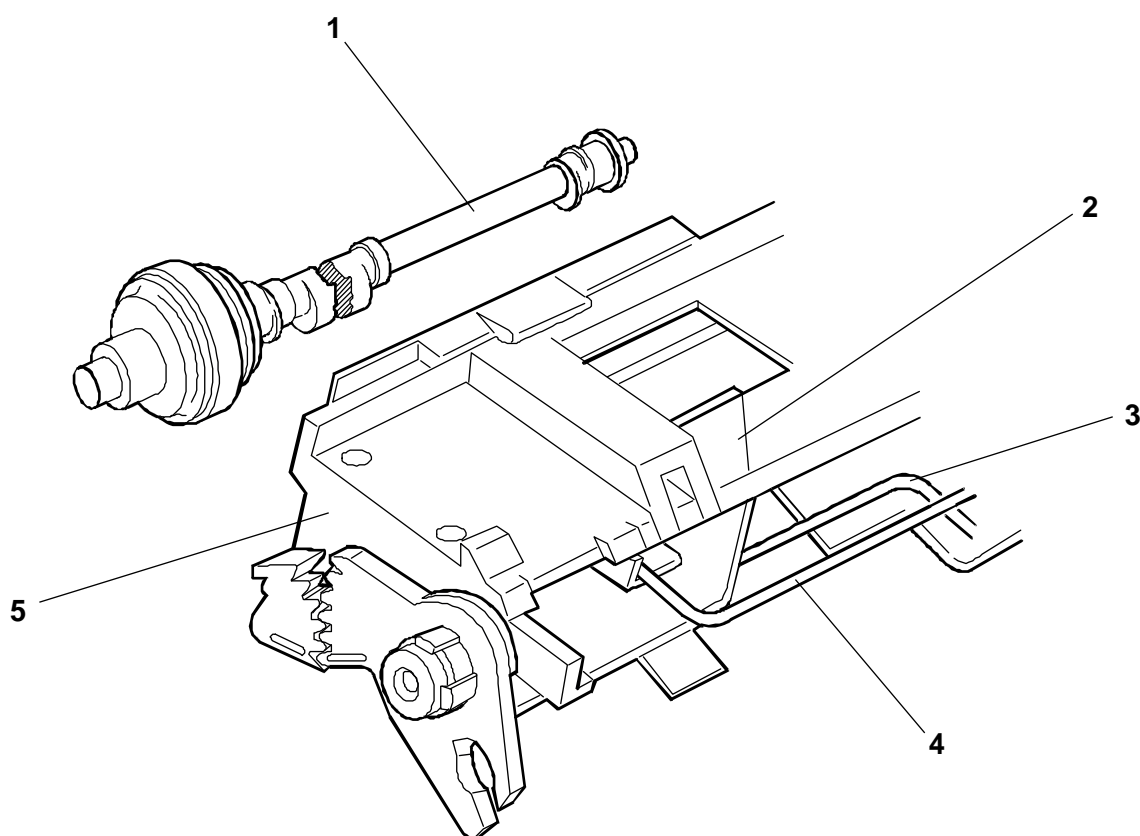
REF.	CODE	DESCRIZIONE	DESCRIPTION
1	204933 W	GRUPPO POMPA	PUMP ASSEMBLY
2	581402 M	GRUPPO ALBERO A CAMME	CAM SHAFT ASSEMBLY
3	581413 F	SELETTORE PER TRASCINATORE	SELECTOR FOR TRANSPORTE
4	581464 J	ALBERO CARRELLO	CARRIAGE SHAFT
5	581433 B	RUOTA INTERMEDIA (B)	INTERMEDIATE WHEEL (B)
6	581431 H	MOTORE AVANZAMENTO CARTA	PAPER ADVANCEMENT MOTOR
7	581434 C	RUOTA INTERMEDIA (A)	INTERMEDIATE WHEEL (A)
8	204928 H	GRUPPO SUPPORTO SCRITTURA	PRINTING SUPPORT



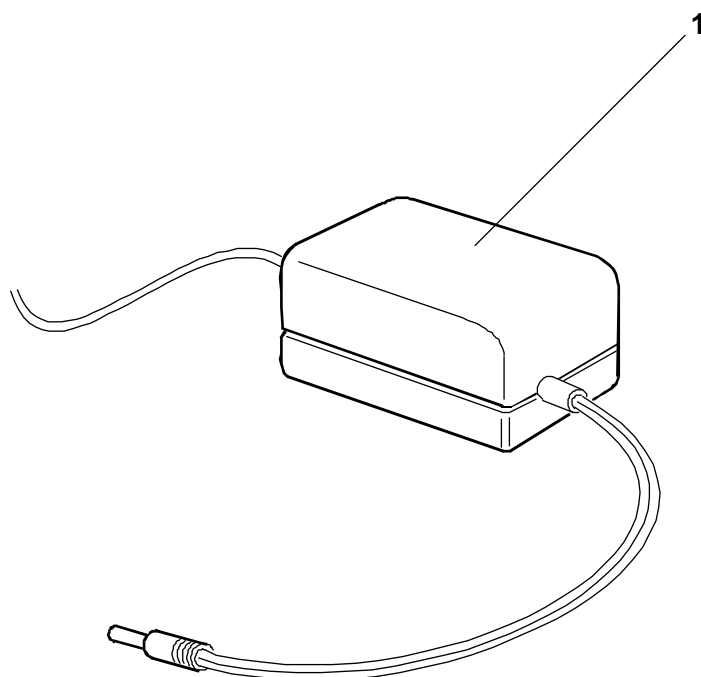
REF.	CODE	DESCRIZIONE	DESCRIPTION
1	204981 X	GOMMINO CONTRASTO FLAT	FLAT RUBBER
2	204989 F	CARRELLO	CARRIAGE
3	581592 B	GR. SENSORE PRESENZA CARTA	PAPER SENSOR
4	581442 L	GR. SUPPORTO MOTORE	MOTOR SUPPORT ASSEMBLY
5	581432 A	MOTORE CARRELLO	CARRIAGE MOTOR
6	581415 H	MOLLA SELETTORE	SELECTOR SPRING
7	581451 M	PULEGGIA TENDICINGHIA	BELT TENSION PULLEY
8	581452 N	MOLLA A COMPRESSIONE	COMPRESSION SPRING
9	581448 S	GR. SUPPORTO TENDICINGHIA	BELT TENSION SUPPORT
10	581446 Q	CINGHIA DENTATA	TOO THED BELT
11	581382 Q	RULLINO DI CONTRASTO	CONTRAST ROLLER
12	204931 U	GR. ALBERO USCITA	EXIT SHAFT ASSEMBLY



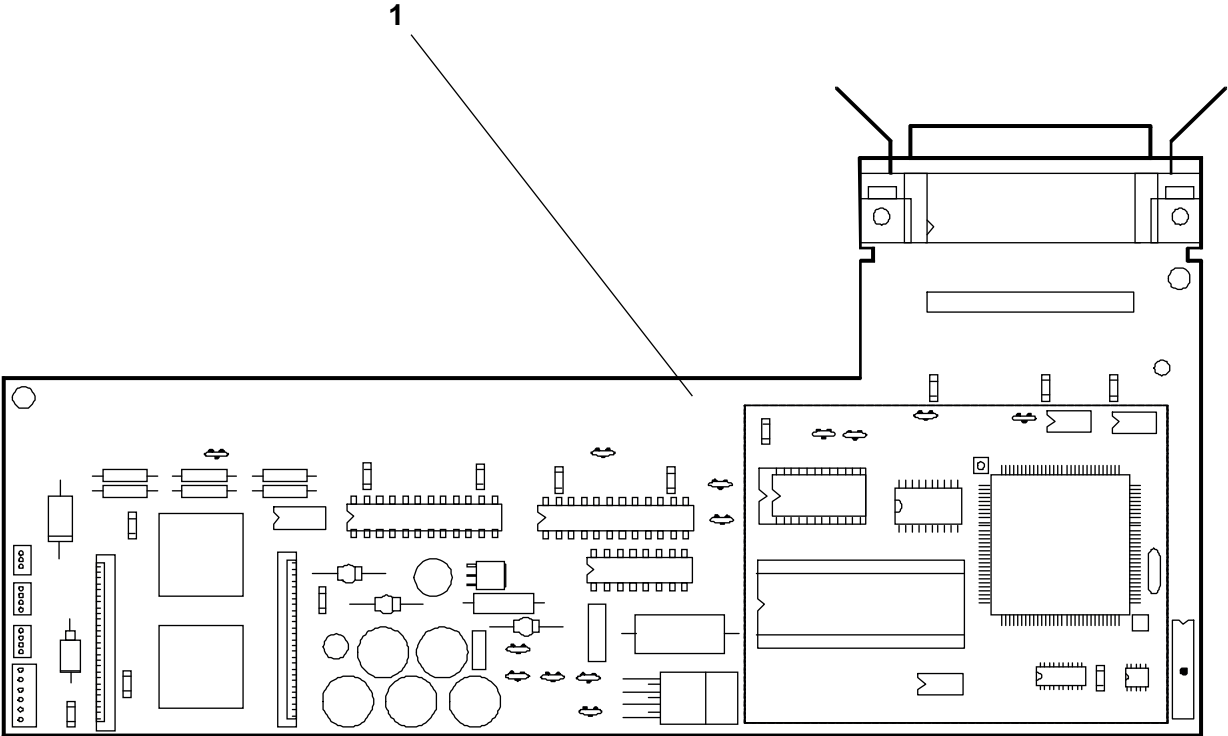
REF.	CODE	DESCRIZIONE	DESCRIPTION
1	581402 M	GRUPPO ALBERO CAMME	CAM SHAFT ASSEMBLY
2	582283 N	GRUPPO PATTINO DI SPINTA	SLIDING OF THRUST ASSY
3	581365 W	MOLLA TORSIONE SINISTRA	LEFT TORSION SPRING
4	581361 S	MOLLA TORSIONE DESTRA	RIGHT SHAFT ASSEMBLY
5	204924 V	GRUPPO A.S.F.	A.S.F. ASSEMBLY



REF.	CODE	DESCRIZIONE	DESCRIPTION
1	581553 K	ALI 220V/50Hz EUROPA	P.S. 220V/50Hz EUROPE
	581554 L	ALI 115V/60Hz USA	P.S. 115V/60Hz USA
	581555 M	ALI 240V/50Hz U.K.	P.S. 240V/50Hz U.K.
	581556 N	ALI 240V/50Hz AUSTRALIA	P.S. 240V/50Hz AUSTRALIA
	581557 P	ALI 220V/50Hz SUD AFRICA	P.S. 220V/50Hz SOUTH AFRICA



REF.	CODE	DESCRIZIONE	DESCRIPTION
1	612791 Y	PIASTRA PER JP	BOARD FOR JP



INDICE GENERALE DEI CODICI

GENERAL CODES INDEX

INDICE GENERALE DEI CODICI - GENERAL CODES INDEX

CODICE CODE	PAGINA PAGE	CODICE CODE	PAGINA PAGE	CODICE CODE	PAGINA PAGE
204897T	5				
204924V	8				
204926X	5				
204928H	6				
204931U	7				
204933W	6				
204981X	7				
204987V	3				
204989F	7				
309973P	4				
309974Q	4				
309977K	4				
309978U	4				
309986D	3				
309987E	3				
309988P	3				
309989Q	3				
309990M	3				
309991A	3				
309995E	3				
309995E	4				
309999J	3				
309999J	4				
581322K	4				
581342X	3				
581352Z	3				
581361S	8				
581365W	8				
581379C	5				
581382Q	7				
581402M	6				
581402M	8				
581413F	6				
581415H	7				
581431H	6				
581432A	7				
581433B	6				
581434C	6				
581441K	3				
581442L	7				
581446Q	7				
581448S	7				
581451M	7				
581452N	7				
581464J	6				
581465K	5				
581553K	9				
581554L	9				
581555M	9				
581556N	9				
581557P	9				
581592B	7				
581929L	5				
582283N	8				
612791Y	4				
612791Y	10				

STATO DI AGGIORNAMENTO UPDATING STATUS

[illegible]