

PROCESSOR TECHNOLOGY CORPORATION

Sol-PC SINGLE BOARD TERMINAL COMPUTERTM

SECTION III

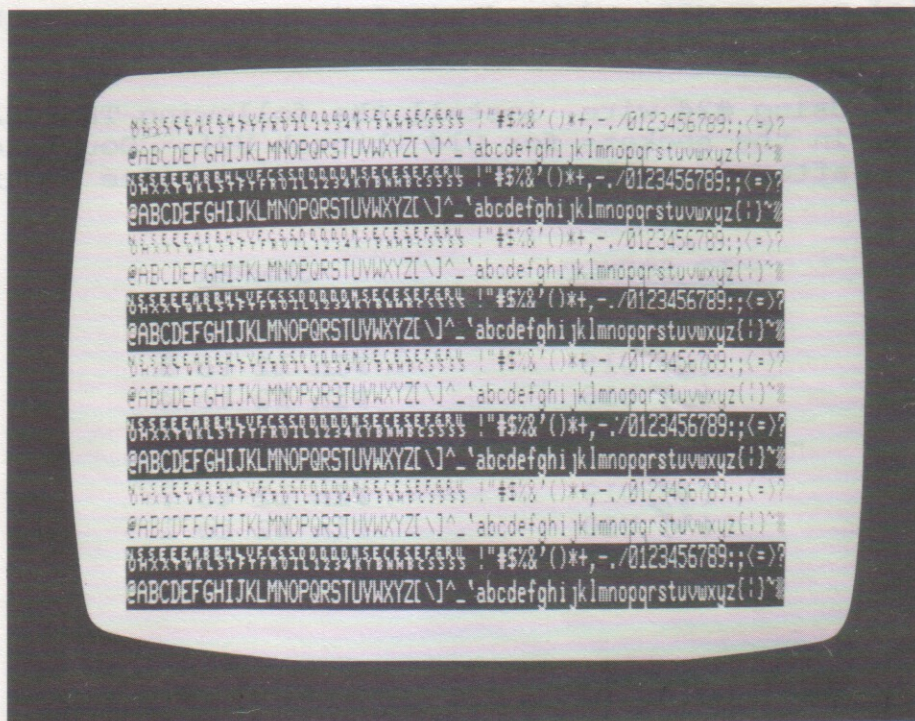


Figure 3-8. Display circuits test pattern, 6575 character generator. (6574 pattern differs. See Section VIII.)

- (✓) Step 29. Install 91L02APC or 2102L1PC IC's in locations U14 through U21. Pay careful attention to proper orientation.

CAUTION

IC's U14 THROUGH U21 ARE MOS DEVICES. REFER TO CAUTION ON PAGE III-8 BEFORE YOU INSTALL THESE IC's.

NOTE

Dots on the assembly drawing and PC board indicate the location of pin 1 of each IC.

- () Step 30. Install the following resistors in the indicated locations. Bend leads to fit distance between mounting holes, insert leads, pull down snug to board, solder and trim.

<u>LOCATION</u>	<u>VALUE (ohms)</u>	<u>COLOR CODE</u>
(✓) R12	1.5K	brown-green-red
(✓) R18	10 K	brown-black-orange

(Step 30 continued on Page III-26.)